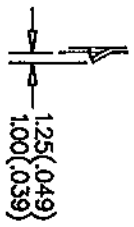
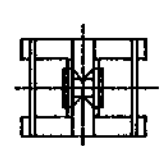


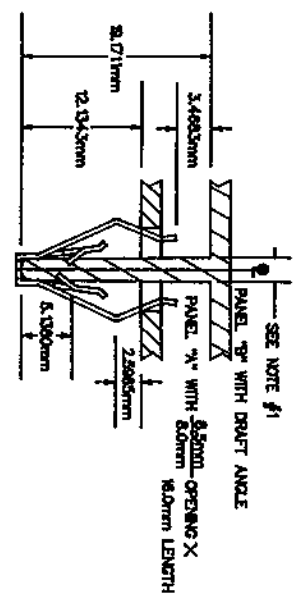
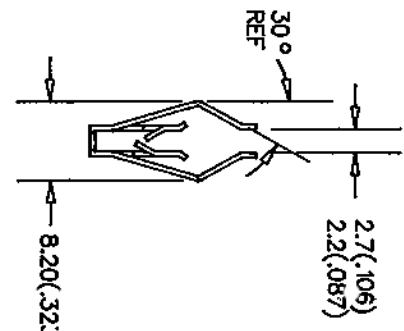
DATE E.C.O. REVISIONS  
 JUNE 9/80 ADDED PERFORMANCE SPECIFICATIONS

D98568-056M

D98568-056M

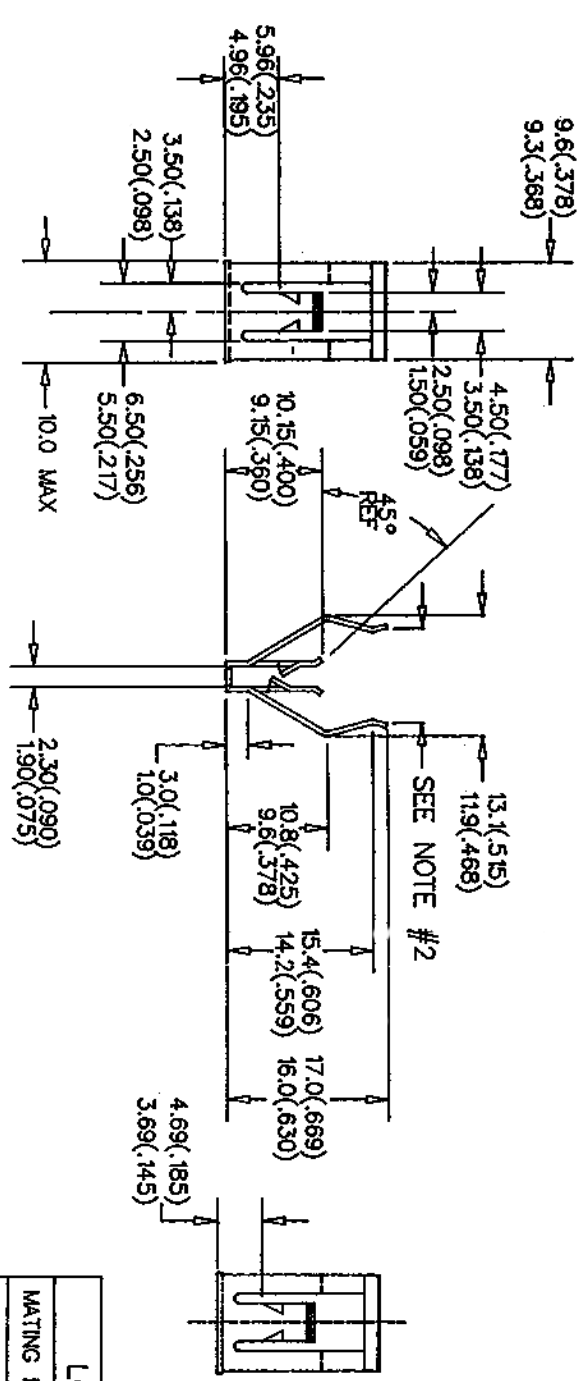


BARB - 2:1



NOTE: 2.70/2.20 DIMENSION TO BE CHECKED WHEN PART IS COMPRESSED TO 8.20

NOTES  
 1) DIMENSION AT THIS LOCATION IS 1.7-2.2mm WITH A DRAFT ANGLE OF 0.5/30DE  
 2) 2.7/2.2 DIMENSION TO BE CHECKED WHEN PART IS COMPRESSED TO 8.20



SEE NOTE #2

NOTE: "D" IDENTIFICATION TO APPEAR ON FACE OF PART.

LOAD TO MATING PART.

MATING PART	INSERTION	PULL-OUT
B	15 KG. MAX. (34.17) LBS.	10 KG. MIN. (22.05) LBS.
A	5.5 KG. MAX. (12.13) LBS.	2.0-3.0 KG. (4.40-6.84) LBS.

MATERIAL	SCALE	DRAWN F. TRISTANI	CHECKED	APPROVED
SAE 1050-1065	2:1	DATE 09/15/88	RELEASED	IST. PROD.
THICKNESS .56(.022) HEAT TREAT AUSTEMPER	GLASS OF FIT	SPECIAL FEATURES		D98568-056M
	NET WT/1000	FINISH ROCK: Rc44-51		