

D98568-051M

D98568-051M

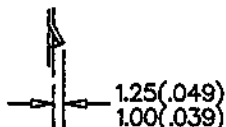
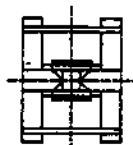
NONCONTROLLED COPY

DATE E.C.O. REVISIONS
A NOV. 02/88 17.0(.669)/16.0(.630)
WAS 17.65(.695)/16.65(.656)

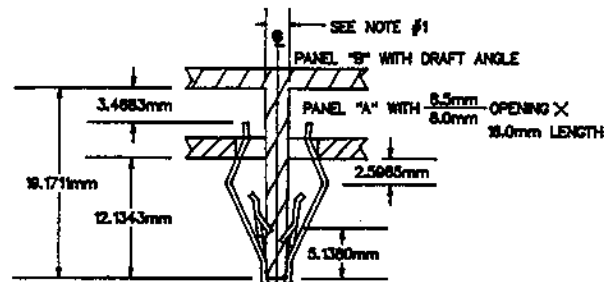
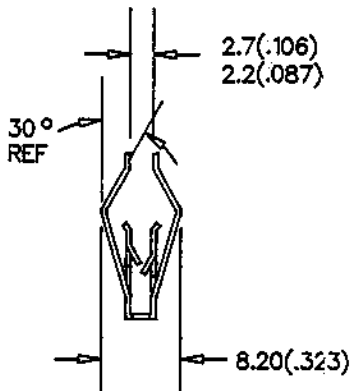
B JUNE 08/89 OPENING FOR GAP DIMENSION
REMOVED.

C JULY 10/90 ADDED PERFORMANCE SPECIFICATIONS.

D DEC 4/90 899 ADDED STAMP NOTATION.



BARB - 2:1

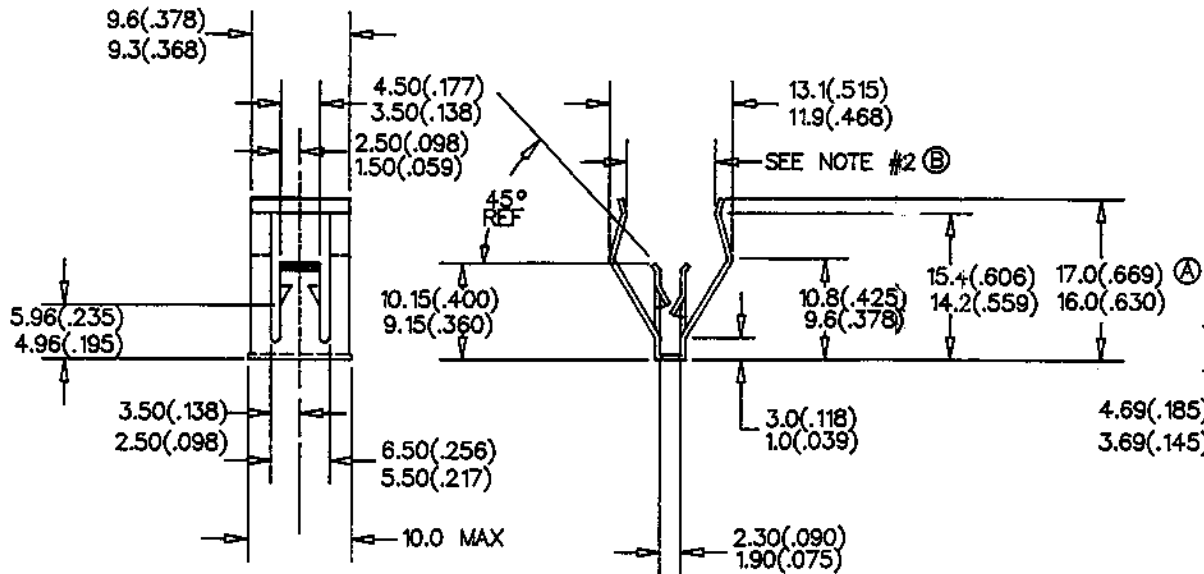


NOTES:

1) DIMENSION AT THIS LOCATION IS 1.7-2.1mm WITH A DRAFT ANGLE OF 0.5/SIDE

2) 2.70/2.20 DIMENSION TO BE CHECKED WHEN PART IS COMPRESSED TO 8.20

DIMENSIONS SUBJECT TO REVIEW OF LONG TERM CAPABILITIES



NOTE: "D" IDENTIFICATION TO APPEAR ON FACE OF PART.

LOAD TO MATING PART		
MATING PART	INSERTION	PULL-OUT
B	15.5Kg. MAX. (34.7)LBS.	10Kg. MIN. (22.05)LBS.
A	5.5Kg. MAX. (12.13)LBS.	2.0-9.0Kg. (4.40-19.84)lbs

APPROVED: []
1ST. PROO. []

DRAWN: F. TRISTANI
DATE: 09/15/88
CHECKED: []
RELEASED: []

SPECIAL FEATURES

SCALE: 2:1

CLASS OF FIT: NET WT/1000

FINISH: ROCK Rc44-51

MATERIAL: SAE 1050-1065

THICKNESS: 5(.020) HEAT TREAT: AUSTEMPER

D98568-051M



Tinnerman Palnut
Engineered Products, LLC
P.O. Box 10
Brunswick, OH 44212