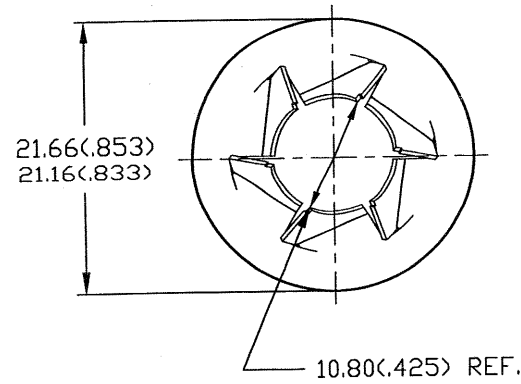


DWG

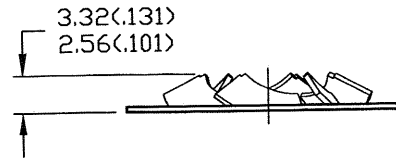
PT120021



# CONTROLLED



Controlled copy must be in Red



NOTES:

- 1) PARTS TO HOLD THREADED BOLT IN PLACE IN A SUB-ASSEMBLY AS A TEMPORARY FASTENER UNTIL FINAL ASSEMBLY.
- 2) PERFORMANCE:  
 MAX PUSH ON FORCE = 133.4 N  
 MIN HOLDING STRENGTH = 133.4 N
- 3) MIN. BOLT PROJECTION = 6.0

ALL DIMENSIONS IN mm. ENGLISH EQUIVALENTS IN ( )

			<b>TINNERMAN PALNUT</b> ENGINEERED PRODUCTS, LLC MOUNTAINSIDE, NJ		PAL® PALNUT® ON SERT® PUSHNUT®	
			MATERIAL: CARBON SPRING STEEL-.38-AISI1050		TITLE PALNUT FASTENER ROUND FLAT TYPE STYLE 'PT', BOLT RETAINER	
			HARDNESS: ROCKWELL 30N 58-68		DRAWN: CMB	RELEASED
04/07/05	E	ECD#658: MIN HOLDING STRENGTH WAS 444.8 N	PG		DATE: 11/6/93	PART No: PT120021
11/18/02	D	ECD#310: ADDED PERFORMANCE NOTE(2), 10.80 REF. WAS 10.95 / 10.65	B.A.		CHECKED: BA	DWG No.
11/27/00	C	ECD180: DISCLAIMER NOTE ADDED.	CNC		APPROVED: BA	SCALE NONE
10/19/00	B	MATERIAL THICKNESS .38 - ADDED.	CNC		PT120021	
11/6/93	A	REDRAWN FROM TABULATED DWG. PT (METRIC)	CMB			
DATE	REV	DESCRIPTION	BY			