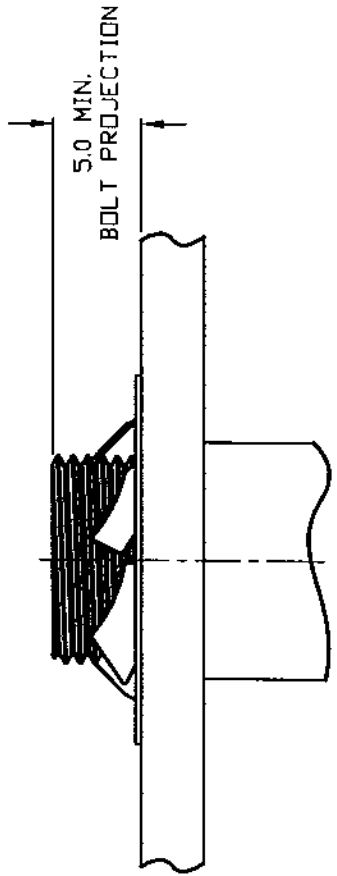
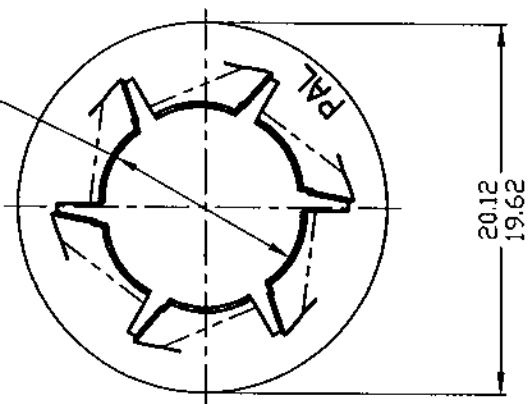


DWG

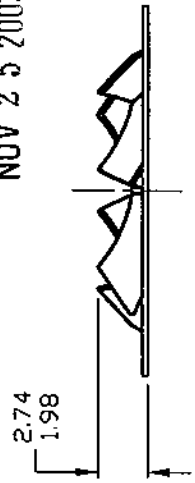
PT100020

9.09 REF.



UNCONTROLLED

NOV 2 5 2002



Controlled copy must be in Red

NOTES:

- 1. PARTS TO HOLD THREADED BOLT IN PLACE IN A SUB-ASSEMBLY AS A TEMPORARY FASTENER UNTIL FINAL ASSEMBLY.
- 2. PERFORMANCE:
MAX PUSH ON FORCE = 155.7 N
MIN HOLDING STRENGTH = 667.0 N

PAL [®] PALNUT [®] DN SERT [®] PUSHNUT [®]		PUSHNUT FASTENER, ROUND FLAT TYPE, STYLE 'PT' BOLT RETAINER 10mm x 20mm SIZE		SCALE
TITLE		BAD	RELEASED	NONE
DRAWN		DATE	PART No:	DWG No.
TINNERMAN PALNUT ENGINEERED PRODUCTS, LLC MOUNTAINBIDE, NJ		9/8/93	PT 100020	PT100020
MATERIAL: CARBON SPRING STEEL -.38±.02-SAE1050		CHECKED:	APPROVED:	
HARDNESS: ROCKWELL 30N 58-68				
11/18/02	C	ECD318 9.09 REF. WAS 9.24 / 8.94, REMOVED ID NOTE	B.A.	
11/27/00	B	ECD180L DISCLAIMER NOTE ADDED.	CNC	
8/10/00	A	REDRAWN TO AUTOCAD 2000	MS.	
DATE	REV	DESCRIPTION	BY	