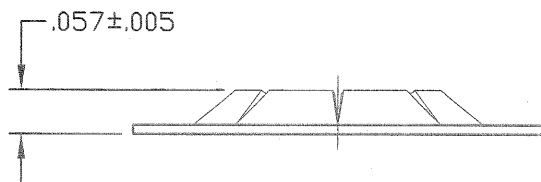
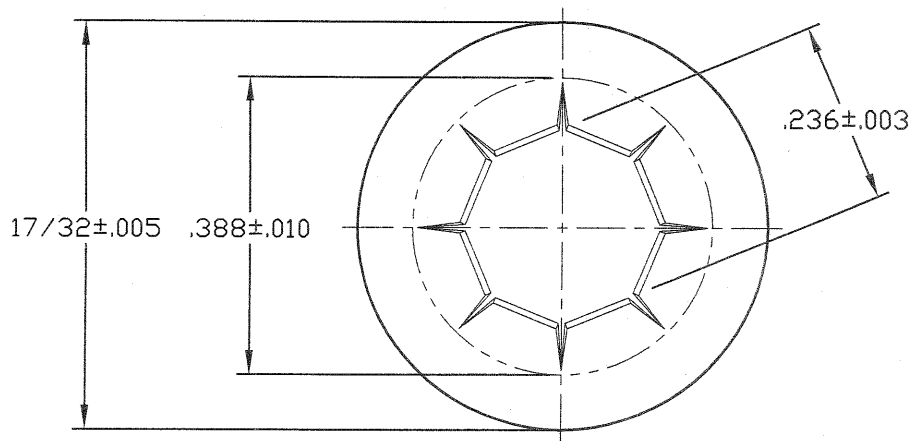


DWG

PS250385

OPTIMUM PERFORMANCE DEPENDS ON ADHERENCE TO THESE STUD, ROD OR WIRE SPECIFICATIONS.

1. MATERIAL MAY BE MILD STEEL, ALUMINUM, BRASS, ZINC OR OTHER MALLEABLE METALS, ALSO PLASTICS WITH GOOD TENSILE STRENGTH AND TOUGHNESS.
2. SURFACE HARDNESS MUST NOT EXCEED ROCKWELL 30T-78.
3. RECOMMENDED DIAMETER TOLERANCE $+0.002''$
 $-0.003''$
4. ENDS MUST BE FREE OF DISTORTION OR BURRS. CHAMFER $1/32'' \times 45^\circ$ FOR EASIER ASSEMBLY.
5. NICKEL, CHROMIUM OR OTHER HARD FINISHES ON STEEL OR DIE CAST STUDS ARE NOT RECOMMENDED.



CONTROLLED

Controlled copy must be in Red



MATERIAL:
SPRING STEEL-.012-SAE1050

HARDNESS: ROCKWELL 30N 58-68

TOLERANCES, UNLESS SPECIFIED:
mm in
.X ± .25 .XX ± .010
.XX ± .13 .XXX ± .005

PAL® PALNUT® ON SERT® PUSHNUT®			
TITLE PUSHNUT FASTENER, ROUND FLAT TYPE (LIGHT GAGE), STYLE 'PS' FOR STUDS, RODS OR WIRE 1/4" ID x 17/32 OD			
DRAWN:	BAD	RELEASED	SCALE
DATE:	4/20/93	PART No: PS250385	NONE
CHECKED:	<i>Tm</i>	DWG No.	
APPROVED:	<i>Tm</i>	PS250385	

9/6/00	A	REDRAWN TO AUTOCAD 2000	MS
4/20/93		REDRAWN TO INDIVIDUAL A-SIZE DWG.	BAD
DATE	REV	DESCRIPTION	BY