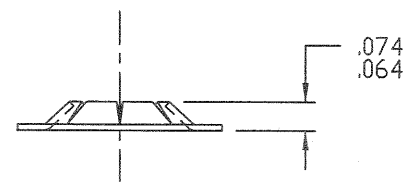
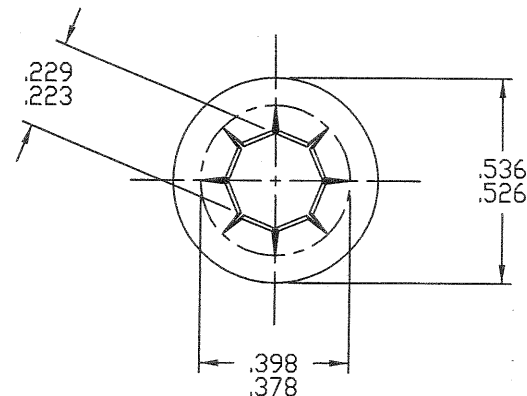


DWG

PS240085

OPTIMUM PERFORMANCE DEPENDS ON ADHERENCE TO THESE STUD, ROD, OR WIRE SPECIFICATIONS.

1. MATERIAL MAY BE MILD STEEL, ALUMINUM, BRASS, ZINC, OR OTHER MALLEABLE METALS.
2. SURFACE HARDNESS MUST NOT EXCEED ROCKWELL 30T 78.
3. RECOMMENDED DIAMETER TOLERANCE  $\begin{matrix} +.002 \\ -.003 \end{matrix}$
4. ENDS MUST BE FREE OF DISTORTION OR BURRS. CHAMFER ENDS  $1/32 \times 45^\circ$  FOR EASIER ASSEMBLY.
5. NICKEL, CHROMIUM, OR OTHER HARD FINISHES ON STEEL STUDS ARE NOT RECOMMENDED.
6. NICKEL-CHROMIUM PLATING ON DIE CAST STUDS MUST NOT EXCEED .003" THICKNESS.



**CONTROLLED**  
Controlled copy must be in Red



MATERIAL: 50 CARBON SPRING STEEL  
.016 THICKNESS

HARDNESS: ROCKWELL 30N 58-68

TOLERANCES, UNLESS SPECIFIED:  
mm                      in  
 $\pm .25$                        $\pm .010$

PAL®    PALNUT®    ON SERT®    PUSHNUT®

TITLE  
PUSHNUT FASTENERS,  
ROUND FLAT TYPE,  
STYLE PS FOR STUDS, RODS OR WIRE  
.240 x 17/32 DIA.

DR. BY: D.B.	RELEASED	SCALE
DATE 1/31/86	PART PS240085	NONE

CHECKED *TM* DWG  
APPROVED *TM* PS240085

DATE	REV	DESCRIPTION	BY
8/15/94	B	REDRAWN TO CAD; NO CHANGES	BAD
6/18/86	B	CORRECTED DWG.	EJB
2/26/85	A	MATL. THK. WAS .017 PER EC #583	C.F.