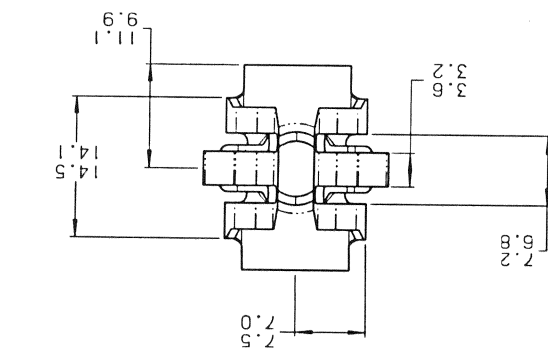
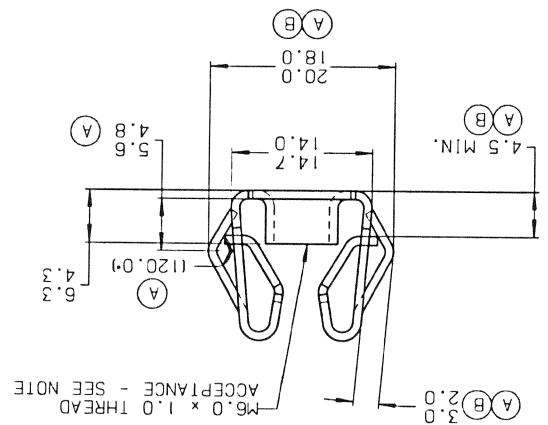
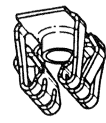
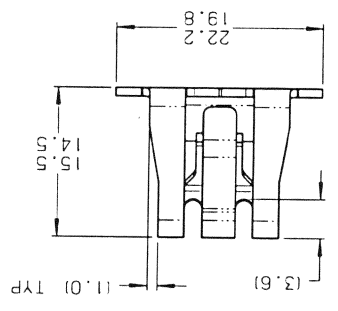


NOTE: MANUFACTURER'S IDENTIFICATION TO APPEAR ON FACE OF PART. DIMENSIONING AND TOLERANCING PER ASME Y14.5M.

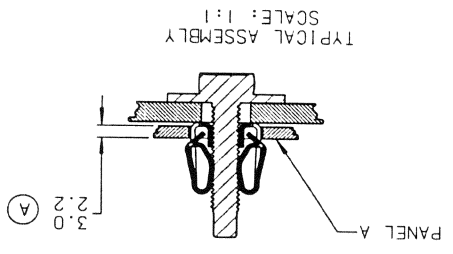
SCALE 1:1



NOTE: TORQUE SPECIFICATIONS APPLY WHEN TESTED WITH M6.0 x 1.0 6G SCREW. PROPERTY CLASS 9.8 FINISH CM6280M	
PROOF LOAD	18.4 KN (OVER Ø7.5 HOLE)
MIN DESTUCT TORQUE	15.0 Nm (132.76 lb-in)
MIN PREVAILING TORQUE - 5TH OFF	0.11 Nm (0.97 lb-in)
MIN PREVAILING TORQUE - 1ST OFF	0.11 Nm (0.97 lb-in)
MIN PREVAILING TORQUE - 1ST ON	0.9 Nm (7.97 lb-in)
MAX INSERTION	35 LBS. TARGET 20-25 LBS.
PERFORMANCE SPECIFICATIONS	



RECOMMENDED HOLE SIZE: 14.9mm SO, WITH 0.5mm CORNER RADI



TINNERMAN PATNUT ENGINEERED PRODUCTS (CANADA) CORPORATION P.O. Box 2492 Hamilton, Ontario, Canada L8N 3K1	
DRAWN BY R. GUARASCIA DATE 12/16/02 CHECKED R. RANKIN SCALE 2:1 APPROVED H. RAITMANN 01-13-03	REF: MATERIAL SAE 1050-1065 THICKNESS 0.86 HEAT TREAT AUSTEMPER FINISH HARDNESS Rc44-51
NAME EXPANSION TYPE	
SPECIAL FEATURES:	
DWG NO D99042-M61 SHEET: 1 OF: 1	SIZE B

E.C.O. REV	DESCRIPTION	DATE	DR	CK	APP
4143 A	(1120) ADDED	02/09/05	PS	IDH	HR
	3.3/2.3 WAS 2.8/1.8 (4.5) WAS (3.1)				
	20.3/18.3 WAS 19.3/17.3				
	5.6/4.8 WAS 4.1/3.3				
	3.0/2.2 WAS 2.5/2.0				
4534 B	NOTE ADDED	01/30/07	TT	VA	
	4.5 MIN. WAS (4.5)				
	20.0/18.0 WAS 20.3/18.3				

MARK TOOL:	
TINNERMAN PATNUT ENGINEERED PRODUCTS CLAIMS PROPRIETARY RIGHTS TO THE MATERIAL DISCLOSED HEREIN. THIS DRAWING AND/OR TECHNICAL INFORMATION IS ISSUED IN CONNECTION WITH AN ENGINEERING INFORMATION SERVICE. THIS DRAWING AND/OR TECHNICAL INFORMATION IS THE PROPERTY OF TINNERMAN PATNUT ENGINEERED PRODUCTS AND IS LOANED FOR YOUR ASSISTANCE. INFORMATION IS ISSUED IN CONNECTION WITH AN ENGINEERING INFORMATION SERVICE. THIS DRAWING AND/OR TECHNICAL INFORMATION IS THE PROPERTY OF TINNERMAN PATNUT ENGINEERED PRODUCTS AND IS LOANED FOR YOUR ASSISTANCE.	

CONTROLLED
IF RED