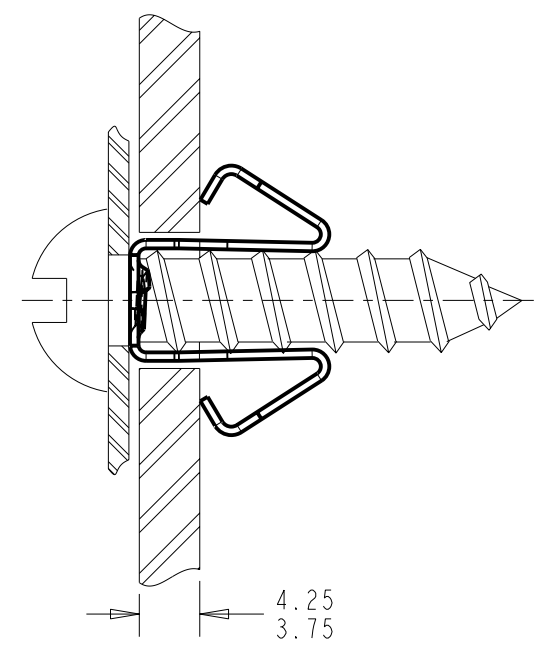
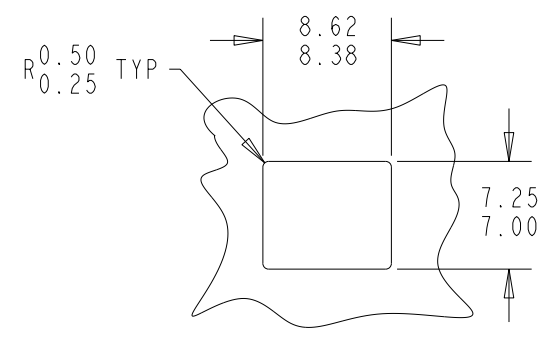
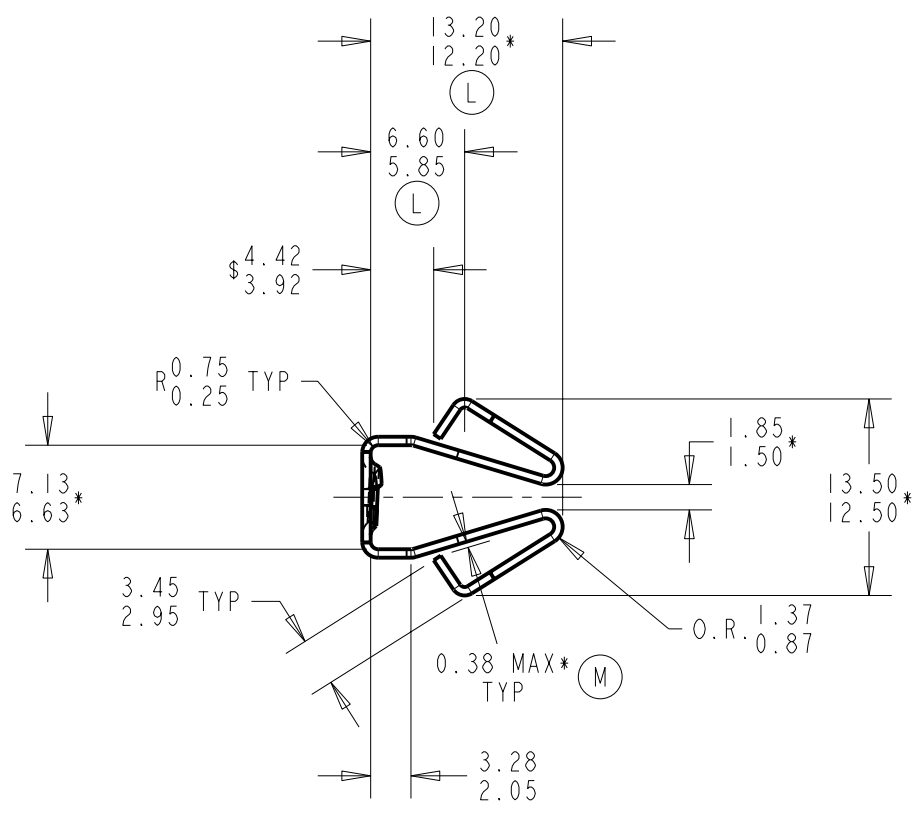
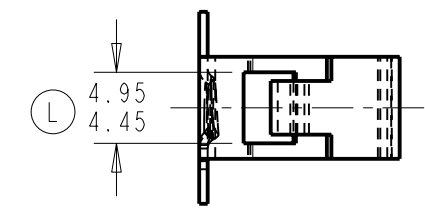
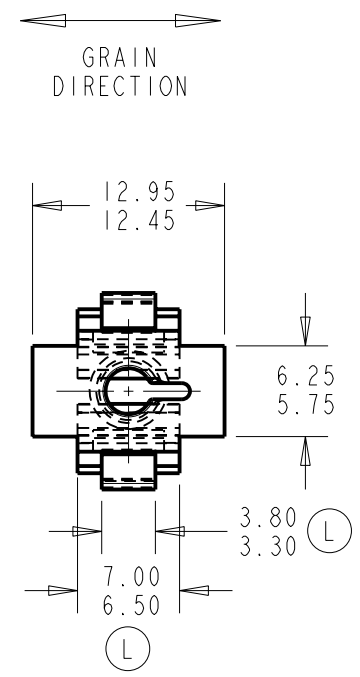


DATE	ECO	REVISIONS
(H) 9-27-93	165154	REMOVAL TORQUE NOTE DELETED, PIN GAGE NOTE REVISED, IDENTIFICATION NOTE REVISED.
(J) 5-26-94	165370	1.85/1.50* WAS 2.00/1.50*.
(K) 7-31-97	400160	4.42/3.92 DESIGNATED SPC DIMENSION (\$).
(L) 2-2-01	401851	ADDED "*" TO 13.20/12.20, NOTE #1 (GO - NO GO), & NOTE #2 (2.82Nm (25"LBS)), REMOVED "*" FROM 7.00/6.50, 3.80/3.30, 6.60/5.85, 4.95/4.45, RECREATED ON PRO/E.
(M) 3-16-02	402240	ADDED 0.38 MAX* TYP

C71632-8AB

C71632-8AB

C



RECOMMENDED HOLE LAYOUT IN PANEL

TYPICAL ASSEMBLY

- NOTES:
- CHECK HELICAL IMPRESSION WITH A PIN GAGE. (GO .116 - NO GO .126)* (L)
 - RECOMMENDED INSTALLATION TORQUE 2.25 Nm (20"LBS), MINIMUM DESTRUCTIVE TORQUE 2.82 Nm (25"LBS)* (L)
 - "T" & "8-AB" IDENTIFICATION STAMPS TO APPEAR ON PART.
 - FINISH: S32 PER FORD SPECIFICATION ESF-M3P7-A.
 - UNLESS OTHERWISE SPECIFIED; ALL DIMENSIONS IN MILLIMETERS.



SCALE 1.000

CLASSIFICATION OF DIMENSIONS		THIRD ANGLE PROJECTION	
*	DENOTES SETUP DIMENSIONS		
	ALL OTHERS-MINOR DIMENSIONS		
DRAWN RTE/JVI/TJS		CHECKED RTE	APPROVED F.F.
DATE 7-11-89		RELEASED 12-12-89	1 ST.PROD. 4-6-90
CLASS OF FIT		SPECIAL FEATURES	
FINISH ROCK. 45-50 Rc		C71632-8AB	
MATERIAL		SPEED NUT - EXPANSION TYPE	
SAE 1050-1055 STEEL			
FORD SPECIFICATION ESB-MIA95-A			
THICKNESS 0.56mm (.022")		HEAT TREAT AUSTEMPER	

"NOTICE TO PERSONS RECEIVING THIS DRAWING AND/OR TECHNICAL INFORMATION" TINNERMAN PALNUT ENGINEERED PRODUCTS CLAIMS PROPRIETARY RIGHTS TO THE MATERIAL DISCLOSED HEREON. THIS DRAWING AND/OR TECHNICAL INFORMATION IS ISSUED IN CONFIDENCE FOR ENGINEERING INFORMATION ONLY AND MAY NOT BE REPRODUCED OR USED TO MANUFACTURE ANYTHING SHOWN OR REFERRED TO HEREON WITHOUT DIRECT WRITTEN PERMISSION FROM TINNERMAN PALNUT ENGINEERED PRODUCTS TO THE USER. THIS DRAWING AND/OR TECHNICAL INFORMATION IS THE PROPERTY OF TINNERMAN PALNUT ENGINEERED PRODUCTS AND IS LOANED FOR MUTUAL ASSISTANCE TO BE RETURNED WHEN ITS PURPOSE HAS BEEN SERVED. THIS DRAWING AND/OR TECHNICAL INFORMATION IS THE PROPERTY OF TINNERMAN PALNUT ENGINEERED PRODUCTS.

TINNERMAN PALNUT
ENGINEERED PRODUCTS, LLC
MASSILLON PLANT 240-6th ST. N.W.
MASSILLON, OHIO 44647

TINNERMAN BRAND

TINNERMAN PALNUT
ENGINEERED PRODUCTS, LLC
MASSILLON PLANT