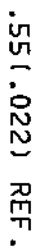
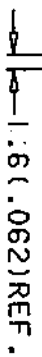
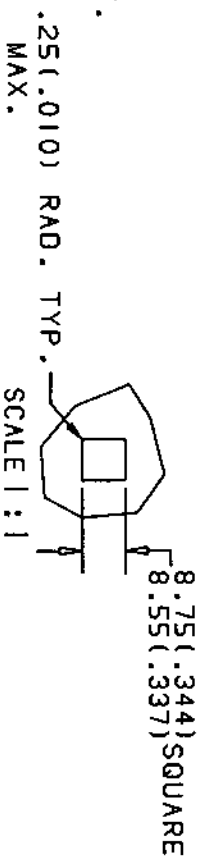
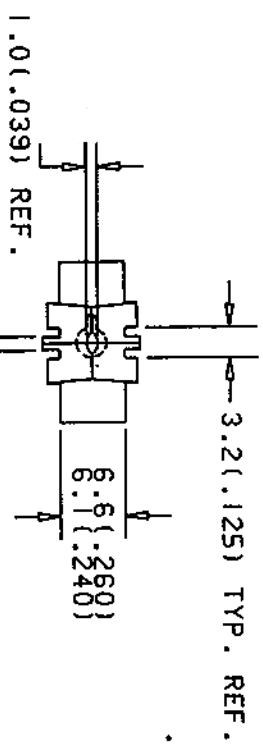


DATE E.C.O. REVISIONS

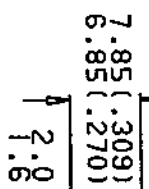
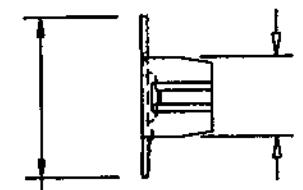
D98683-8Z

D98683-8Z

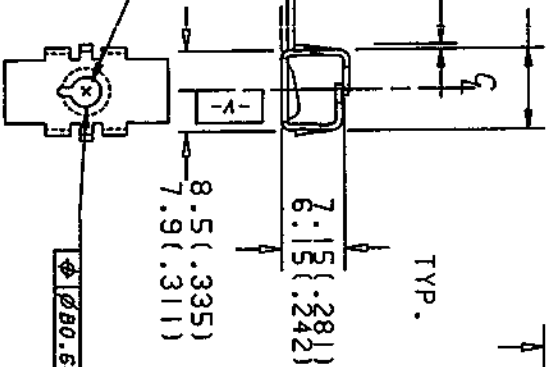
07/17/92 #1198 D98683-8Z WAS D98687-8Z



8:3 (.327)



.8 (.031)  
.5 (.020)  
TYP.



TYP.

SCALE 5:1

1.65 (.065)  
1.35 (.053)  
RAD. TYP.

TYP. ASS'Y  
ACTUAL SIZE



NOTE: "D" IDENTIFICATION TO APPEAR ON FACE OF PART.

PERFORMANCE SPECIFICATIONS	
INSTALLATION (MAX)	89.0 NEWTONS (20 LB-FORCE)
DESTRUCTION TORQUE (MIN)	3.39 Nm 30 IN-LBS

MATERIAL <b>SAE 1050-1065</b>	SCALE 2:1	DRAWN P. Selvey	CHECKED E.C.R.	APPROVED <i>[Signature]</i>
	CLASS OF FIT FREE	DATE 04/24/92	RELEASED Jul 29/92	1ST. PROD. <i>[Signature]</i>
	NET WT/1000	SPECIAL FEATURES 8B SCREW		D98683-8Z <b>(A)</b>