

REVISIONS

E. C. O	REV	DESCRIPTION	DATE	DR	CK	APP
1633	A	PERFORMANCE SPECS. ADDED	11/22/94	MB	RR	HR
		REMOVE NOTE				
1641	B	PICTORIAL CHANGE TO PANEL LAYOUT	12/15/94	PS	MD	HR
1896	C	MAX ADDED TO 11.0 DIM. PANEL THICKNESS 3.50/3.75	5/6/96	RG	RR	HR
		ADDED				
2438	D	AUXILIARY VIEW ADDED	2/8/99	ML	RR	HR
		.75 MAX ADDED				
		(1.5) WAS 1.5				



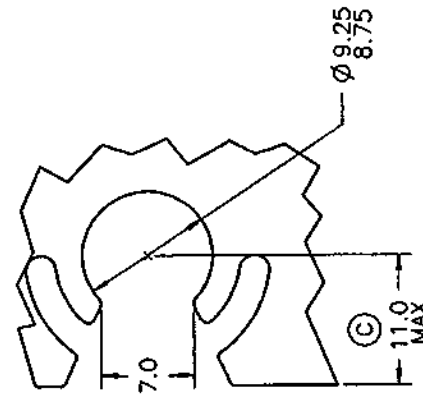
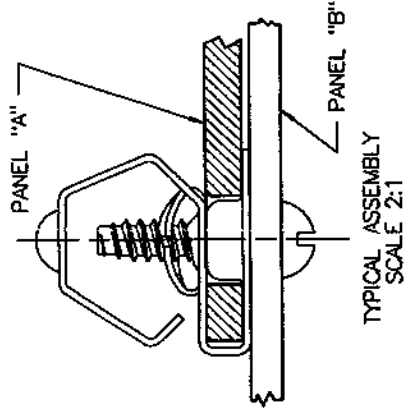
DRAWN BY	DATE	CHECKED	SCALE	APPROVED
P. SELVEY	09/27/94	R. RANKIN	2:1	H. RAITMANN
		RELEASED 11/11/94		(EST. PROD. 11/11/94)

REF	MATERIAL	THICKNESS	HEAT TREAT	FINISH	HARDNESS
	SAE 1050-1065	0.71	AUSTEMPER		Rc44-51

NAME	PRODUCT CODE
HOODED FIVE PRONG	735

SPECIAL FEATURES: M4.2 X 1.41 SCREW IMPRESSION

SHEET 1	DWG NO	SIZE
OF 1	D98765-071M	B

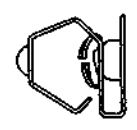
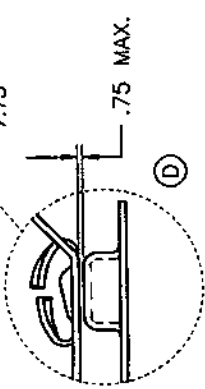
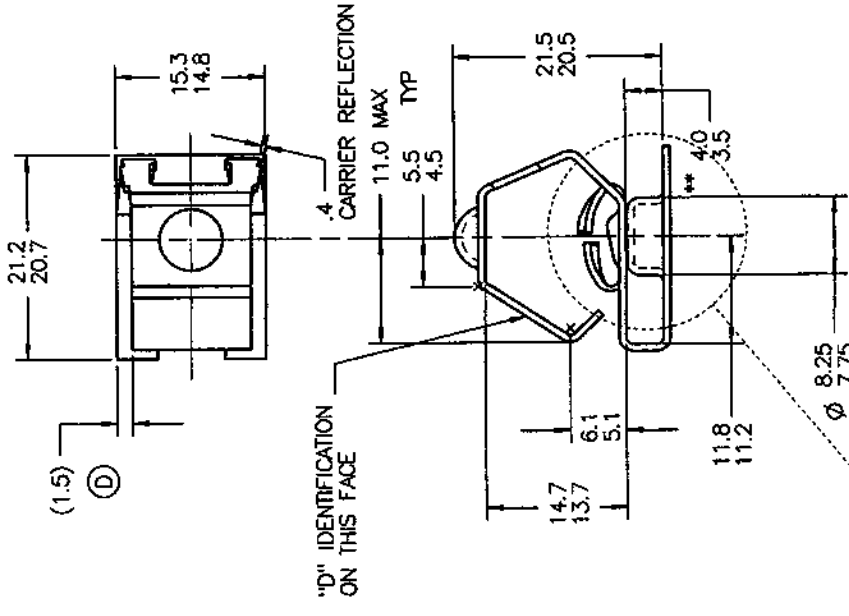


PANEL "A" LAYOUT
 PANEL "A" THICKNESS 3.50/3.75

** TO BE MEASURED WHEN SCREW IS INSTALLED TO 10 INLB.

NOTES: DIMENSIONING AND TOLERANCING PER ANSI Y14.5M.

- PERFORMANCE SPECIFICATIONS:
- MAX PREVAILING TORQUE 1ST ON 0.5NM (4.43LB-IN)
 - MIN PREVAILING TORQUE 1ST OFF AFTER TIGHTENING SCREW TO 1.8NM (0.97LB-IN)
 - MIN PREVAILING TORQUE 5TH OFF 0.11NM
 - MIN DESTRUCTIVE TORQUE 3.4NM (30.1LB-IN)
 - RECOMMENDED INSTALLATION TORQUE 1.6-2.8NM (14.16-24.78LB-IN)



ACTUAL SIZE