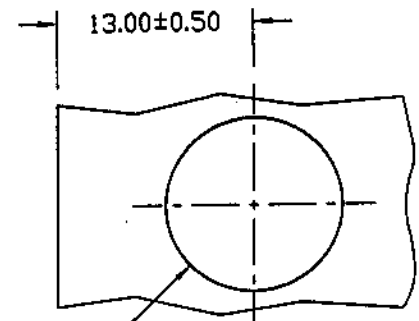
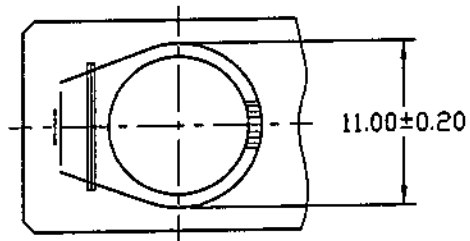
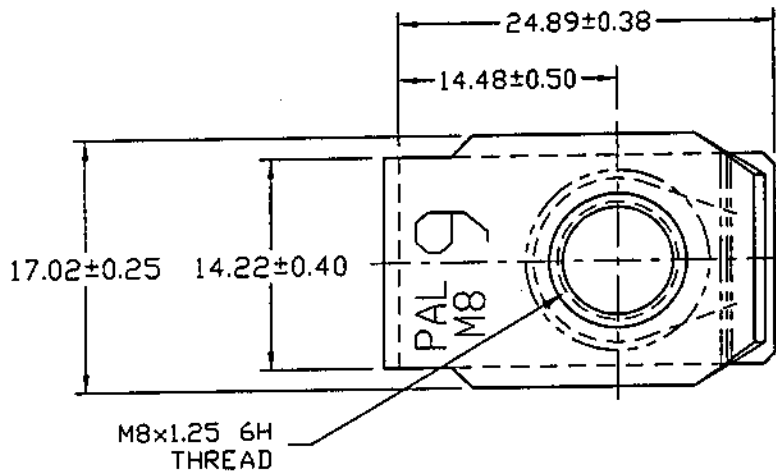


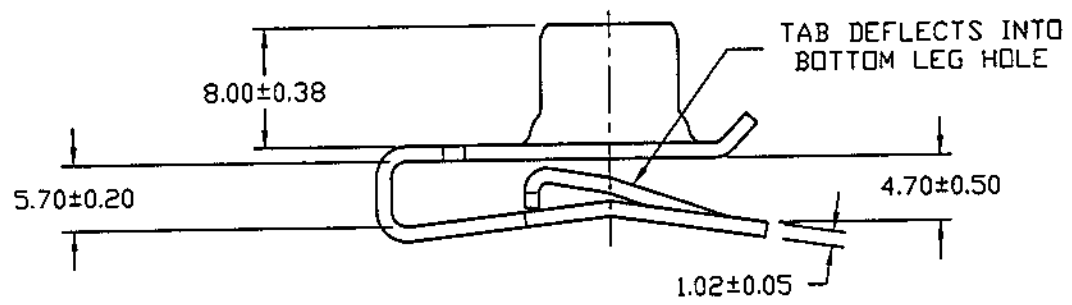
DWG

LUGS085725

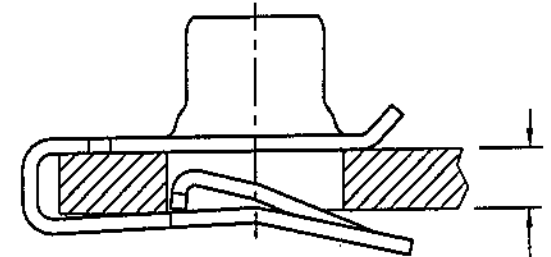
FINAL INSPECTION FOR INTERNAL THREADS SHALL CONSIST OF A STANDARD THREAD GAUGE FOR PARTS WITH ELECTROPLATED OR CHEMICALLY DEPOSITED FINISHES. FOR OTHER FINISHES, THREAD INSPECTION WILL MEET A GO TEST CONDUCTED WITH AN UNCOATED (OR ZN PLATED) MATING BOLT, AND A NO-GO TEST CONDUCTED WITH THE THREAD ELEMENT OF A STANDARD GAUGE.



PANEL HOLE
11.70±0.38Ø



UNCONTROLLED
MAY 1 0 2002



PANEL THICKNESS
1.5/5.5

Controlled copy must be in Red



MATERIAL:
SPRING STEEL-SAE1050

HARDNESS: ROCKWELL C 42-50

PAL® PALNUT® ON SERT® PUSHNUT®

TITLE
M8 x 1.25 MULTI-THREAD "U" NUT
(SHORT) FOR 1.5/5.5
PANEL THICKNESS

DATE	REV	DESCRIPTION	BY
4/23/02	C	EC0259: 5.70±0.20 WAS 6.00±0.20	BAD
4/12/02	B	EC0238: 6.00±0.20 WAS 5.70±0.50	CNC
5/23/01	A	EC0207: THREAD PROPERTY CLASS DESIGNATION ADDED. DRWG ISOLATED FROM 'LUGS-METRIC' DRAWING.	CNC

DRAWN:	CNCas'	RELEASED	SCALE
DATE:	5/23/01	PART No: LUGS085725	NONE
CHECKED:	<i>CPG</i> 4/24/02	DWG No.	LUGS085725
APPROVED:	<i>ND</i> 4/24/02		