

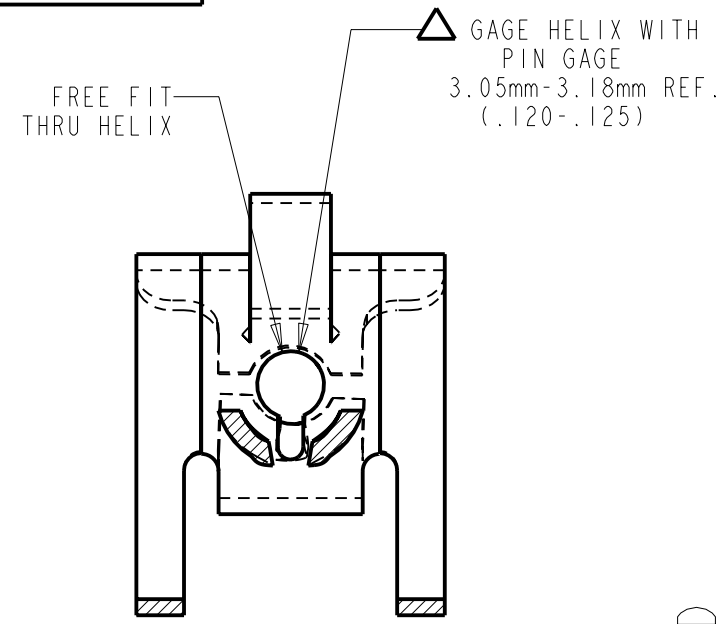
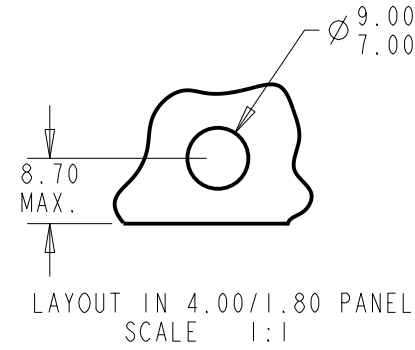
DATE ECO REVISIONS

C71667-M42141

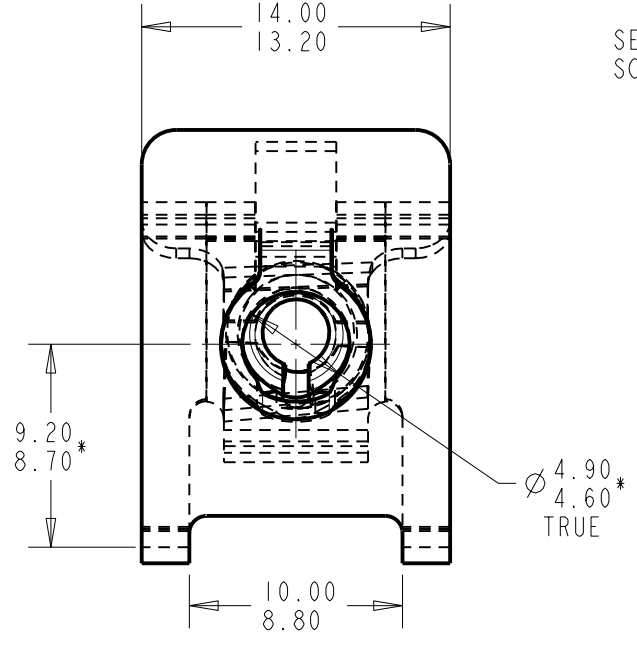
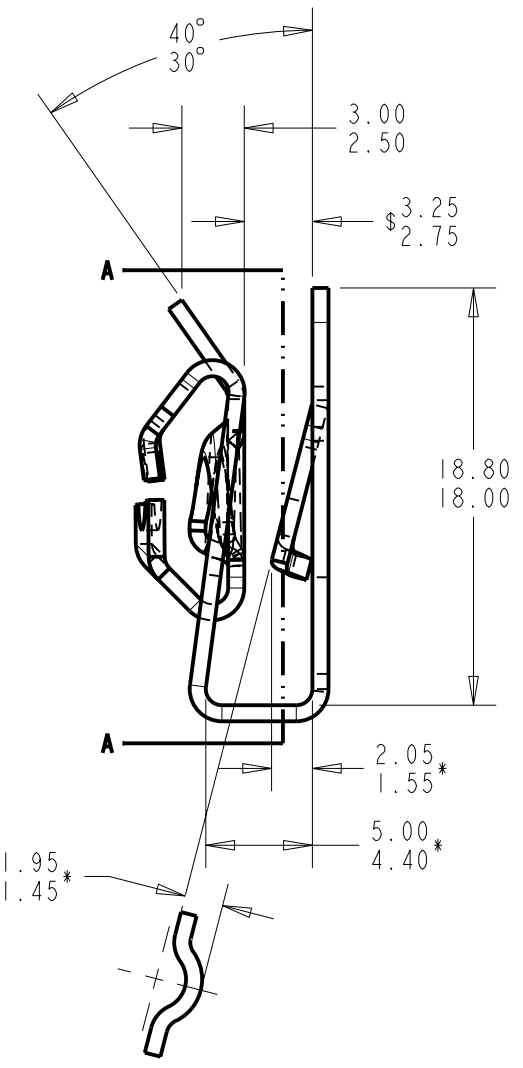
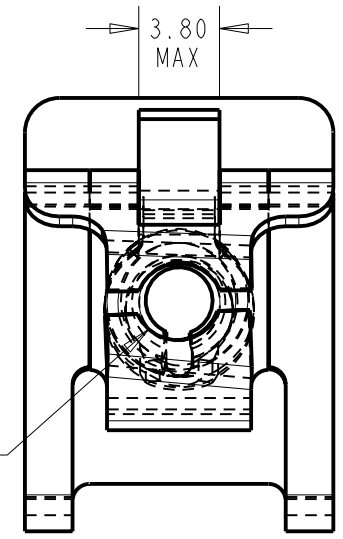
C71667-M42141

C

- G 10-4-96 165991 2.92mm REF WAS 2.54/2.67mm, REF ADDED TO 3.05/3.18mm, NOTE ADDED.
- H 7-31-97 400160 3.25/2.75 DESIGNATED SPC DIMENSION (\$).
- J 7-13-01 401998 RECREATED ON PRO/E.



GRAIN DIRECTION



METRIC PATENTED

"NOTICE TO PERSONS RECEIVING THIS DRAWING AND/OR TECHNICAL INFORMATION"
 TINNERMAN PALNUT ENGINEERED PRODUCTS CLAIMS PROPRIETARY RIGHTS TO THE MATERIAL DISCLOSED HEREON. THIS DRAWING AND/OR TECHNICAL INFORMATION IS ISSUED IN CONFIDENCE FOR ENGINEERING INFORMATION ONLY AND MAY NOT BE REPRODUCED OR USED TO MANUFACTURE ANYTHING SHOWN OR REFERRED TO HEREON WITHOUT DIRECT WRITTEN PERMISSION FROM TINNERMAN PALNUT ENGINEERED PRODUCTS TO THE USER. THIS DRAWING AND/OR TECHNICAL INFORMATION IS THE PROPERTY OF TINNERMAN PALNUT ENGINEERED PRODUCTS AND IS LOANED FOR MUTUAL ASSISTANCE TO BE RETURNED WHEN ITS PURPOSE HAS BEEN SERVED. THIS DRAWING AND/OR TECHNICAL INFORMATION IS THE PROPERTY OF TINNERMAN PALNUT ENGINEERED PRODUCTS.

CLASSIFICATION OF DIMENSIONS	THIRD ANGLE PROJECTION
* DENOTES SETUP DIMENSIONS	
ALL OTHERS-MINOR DIMENSIONS	

DRAWN	KAM/TJS	CHECKED	JVI	APPROVED	F.F.
SCALE	3:1	RELEASED	8-28-92	I ST.PROD.	4-21-93
DATE	11-21-90	C71667-M42141			
CLASS OF FIT	M4.2 x 1.41	SPEED NUT-SPECIAL SHAPE			
FINISH ROCK.	45-50 Rc	TAPPING SCREW			
MATERIAL	SAE 1050-1065 STEEL	HEAT TREAT			
THICKNESS	.71mm (.028)	AUSTEMPER			

NOTE:
 △ = LAB TAKES PRECEDENCE OVER PIN GAGE VALUES
 MAX. PREVAILING TORQUE FIRST ON 0.5Nm.

- NOTES:
- ① IDENTIFICATION STAMP TO APPEAR ON PART.
 - UNLESS OTHERWISE SPECIFIED, ALL DIMENSIONS ARE IN MILLIMETERS.

SCALE 1.000

TINNERMAN PALNUT
 ENGINEERED PRODUCTS, LLC
 MASSILLON PLANT 240-6th ST. N.W.
 MASSILLON, OHIO 44647

TINNERMAN BRAND