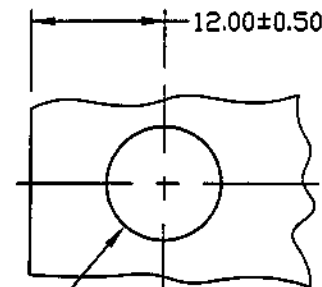
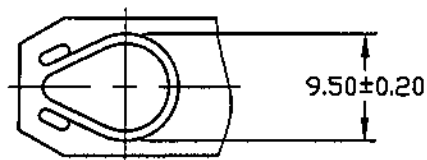
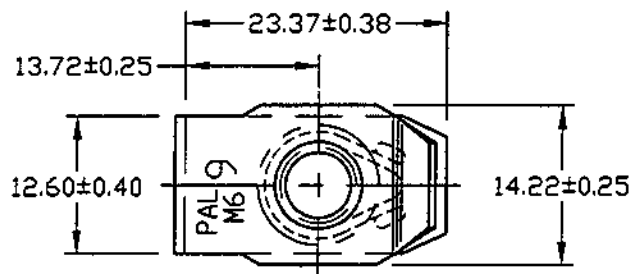


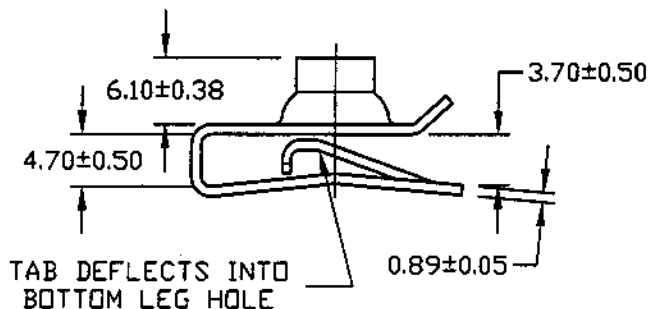
DWG

LUGZ002241

FINAL INSPECTION FOR INTERNAL THREADS SHALL CONSIST OF A STANDARD THREAD GAUGE FOR PARTS WITH ELECTROPLATED OR CHEMICALLY DEPOSITED FINISHES. FOR OTHER FINISHES, THREAD INSPECTION WILL MEET A GO TEST CONDUCTED WITH AN UNCOATED (OR ZN PLATED) MATING BOLT, AND A NO-GO TEST CONDUCTED WITH THE THREAD ELEMENT OF A STANDARD GAUGE.

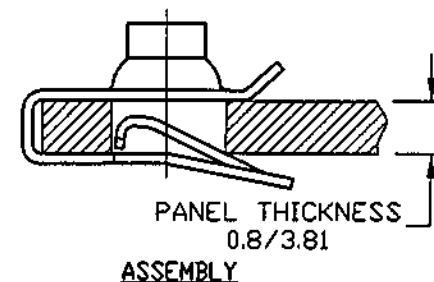


PANEL HOLE
10.30±0.38Ø



UNCONTROLLED

MAY 1 0 2002



Controlled copy must be in Red

TINNERMAN PALNUT
ENGINEERED PRODUCTS, LLC

PAL® PALNUT® ON SERT® PUSHNUT®

TITLE

PALNUT MULTI-THREAD NUT
"U" TYPE, SHORT CLIP STYLE
FOR 0.8-3.81 PANEL THICKNESS

DRAWN: DMF	RELEASED	SCALE
DATE: 12/1/87	PART No: LUGZ002241	NONE

CHECKED: *[Signature]* 7/31/01
APPROVED: *[Signature]*
DWG No. LUGZ002241

DATE	REV	DESCRIPTION	BY
7/31/01	I	ECD207: THREAD PROPERTY CLASS DESIGNATION ADDED	CNC
5/03/01	H	ECD207: REMOVED LUGZ002112 FROM TABULATION DRAWING WAS 'LUGZ-METRIC'	CNC
8/4/00	G	REDRAWN TO AUTOCAD 2000	NLS
6/7/00	F	REMOVED THREAD GRADE INDICATION PER ECD#138	CL
12/21/99	E	ADDED THREAD GAUGE CRITERIA	CJT
6/11/99	D	9.50 WAS 9.70 PER ECD#008	BAD
7/28/98	-	ADDED DESIGN TYPE & LUGZ002241	BAD
4/94	-	0.8-3.81 WAS 0.8-4.0, REDRAWN TO CAD	CB
3/92	-	12.60 WAS 12.70, .40 WAS .25	DF

MATERIAL: SPRING STEEL-SAE1050
HARDNESS: ROCKWELL C 42-50