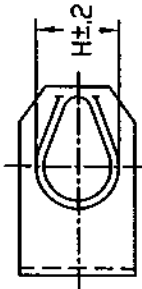
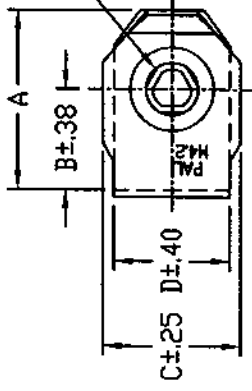


DWG

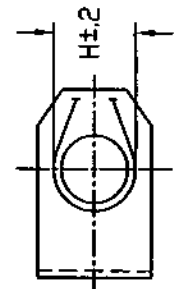
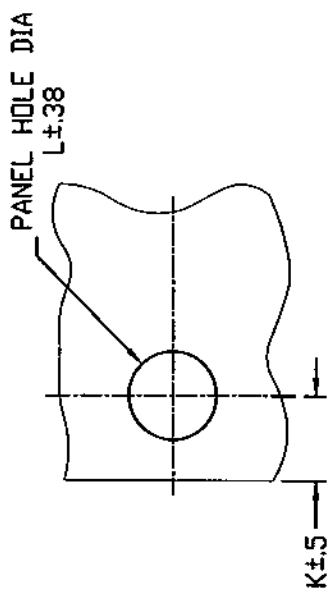
LPGS 4mm SERIES



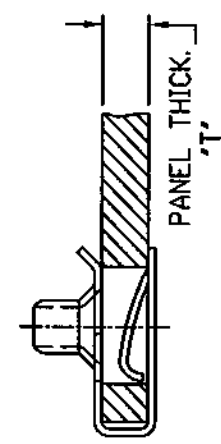
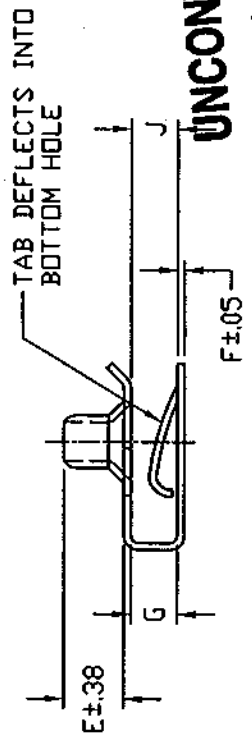
DESIGN 2



THREAD-(PRIOR TO UPSET)
 MAJOR DIA. 4.200 +.051 -.051
 MINOR DIA. 3.099 +.015 -.000
 PITCH 1.410 +.005 -.005



DESIGN 1



UNCONTROLLED

NOV 25 2002 ASSEMBLY

PART NO.	SCREW SIZE	A	B	C	D	E	F	G	H	J	DESIGN	P A N E L		
												L	K	T
LPGS420015	4.2x1.41	16.3 ±.38	9.14	12.5	10.5	5.6	.65	4.25 ±.25	7.5	2.4±0.65	2	7.93	7.6	1.7-3.8
LPGS420016	4.2x1.41	17.3 ±.38	10.15	12.5	10.5	5.6	.65	2.35 ±.25	7.5	0.76±0.50	2	7.93	7.6	.5-2.0
LPGS420017	4.2x1.41	16.9 ±.38	9.60	12.5	10.5	5.6	.65	3.35 ±.15	7.5	2.5±0.65	2	7.93	7.6	2.0-3.0

10/31/02	P	ADDED 'J' DIM. PER ECO #303	BAD
4/6/01	N	ECOR202: LPGS420017/G', 3.35±.15 WAS 3.35±.25	CNC
8/11/00	M	REDRAWN TO AUTOCAD 2000	MS
8/27/97	L	16.9 WAS 17.4 PER EC #1671	BAD
3/25/97	K	'G' TOL. WAS ±.15, 'B' TOL. WAS ±.25 ECR #1621	DMF
5/23/96	J	ROCKWELL WAS 30N 61.5-68.5	CMB
5/13/93	I	1.7 WAS 65 AS PER ECR #1139	DMF
2/10/93	H	CHAMFER 40° WAS 30° PER EC. #1117	RM
3/9/92	G	40 WAS .25	V.S.
12/4/91	F	17.4 WAS 16.4	V.S.
7/8/91	E	ADDED NOTE ON THREAD SIZE	BAD
8/17/90	D	CHANGED PART LEG TO FLAT	TB
5/9/90	C	REDRAWN TO CAD SYSTEM	RM
1/25/90	B	CHANGE H FROM 7.0 TO 7.5	JL
1/24/89	A	ADDED DESIGN 2	JL

TINNERMAN PALNUT ENGINEERED PRODUCTS, LLC MOUNTAINSIDE, NJ	PALNUT ①	ON SERT ②	PUSHNUT ③
TITLE			
PALNUT, MULTI-THREAD NUTS, 'U' TYPE PREVAILING TORQUE SHORT CLIP STYLE, 4mm SERIES			
DRAWN	DH	RELEASED	SCALE
DATE	10/5/88	PART No:	NONE
CHECKED:	<i>PMP</i>	DWG No.	
APPROVED:	<i>TMB</i>		

DATE	REV	DESCRIPTION	BY
		Controlled copy must be in Red	