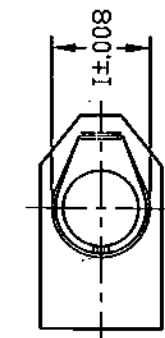


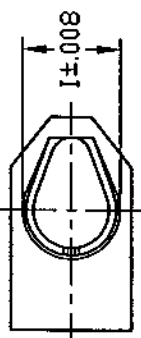
DWG

LUGS

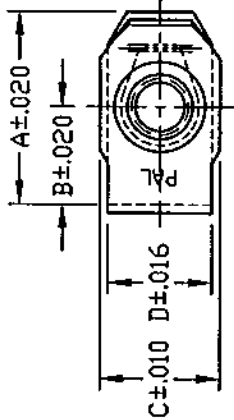
FINAL INSPECTION FOR INTERNAL THREADS SHALL CONSIST OF A STANDARD THREAD GAUGE FOR PARTS WITH ELECTROPLATED OR CHEMICALLY DEPOSITED FINISHES. FOR OTHER FINISHES, THREAD INSPECTION WILL MEET A GO TEST CONDUCTED WITH AN UNCOATED (OR ZN PLATED) MATING BOLT, AND A NO-GO TEST CONDUCTED WITH THE THREAD ELEMENT OF A STANDARD GAUGE.



DESIGN 1

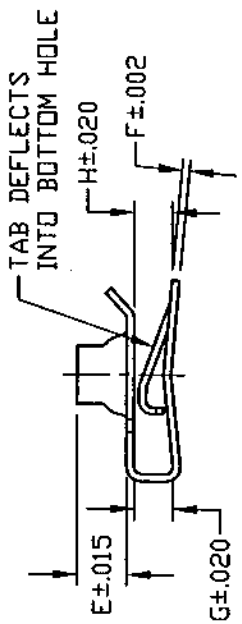
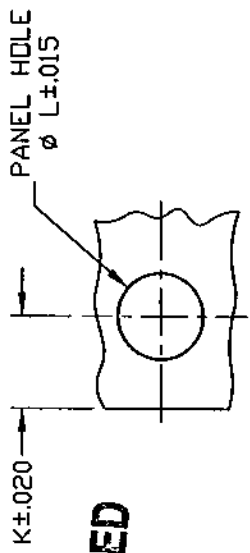


DESIGN 2



UNCONTROLLED
MAY 10 2002

Controlled copy must be in Red



THREAD CLASS - 2B

PART No.	SCREW SIZE	A	B	C	D	E	F	G	H	I	DESIGN			PANEL	
											K	L	T	K	L
LUGS832010	#8-32	.685	.378	.492	.413	.220	.025	.132	-	.295	.300	.312	.300	.312	.025-.150
LUGS142059	1/4-20	.920	.540	.560	.492	.240	.035	.180	.146	.376	.450	.390	.450	.390	.025-.150
LUGS142859	1/4-28	.920	.540	.560	.492	.240	.035	.180	.146	.376	.450	.390	.450	.390	.025-.150
LUGS142073	1/4-20	1.161	.768	.571	.496	.236	.035	.138	.134	.374	.620	.405	.620	.405	.040-.100
LUGS142075	1/4-20	1.170	.772	.572	.485	.233	.035	.185	.146	.379	.620	.405	.620	.405	.030-.160
LUGS561863	5/16-18	.980	.570	.670	.560	.315	.039	.180	.146	.433	.500	.437	.500	.437	.025-.150
LUGS565763	5/16-18	.980	.570	.670	.560	.315	.039	.220	.186	.433	.500	.437	.500	.437	.050-.200
LUGS381683	3/8-16	1.290	.730	.930	.700	.370	.049	.230	.200	.562	.660	.562	.660	.562	.050-.200



MATERIAL:
SPRING STEEL - SAE1050

PALNUT® PALNUT® ON SERT® PUSHNUT®

TITLE: PALNUT MULTI-THREAD NUTS 'U' TYPE, SHORT CLIP STYLE

SCALE: NONE

DRAWN: C.L. RELEASED: [Signature]

DATE: 11/8/74 PART NO: VARIOUS DWG No. [Signature]

CHECKED: [Signature]

APPROVED: [Signature]

Aug 27 2002

DATE	REV	DESCRIPTION	BY
5/22/01	J	ADDED PART LUGS142075	MS
9/19/00	I	RE-DRAWN TO AUTOCAD 2000	MS
12/21/99	H	ADDED THREAD GAUGE CRITERIA	CJT
9/1/94	G	ADDED LUG142073, OBSOLETE LUG142075	DMF
6/3/93	F	*A ± .020, *B ± .020, *V/A ± .015, *B ± .010 ADDED DESIGN #2, 'L' HOLE NOTE, & #832010 PART TO CHART.	DMF
3/10/92	E	.492 WAS .500, .016 WAS .010	V.S.
9/26/90	D	ADDED PART # LUG142075	V.S.
8/1/90	C	ADDED PART # LUG142859	T.B.
10/17/86	B	MAT'L THK. WAS .050 LUG381683 MAT'L THK. WAS .040 LUG565763	R.M.
6/25/85	A	MAT'L THK. WAS .040 LUG561863 LUG142059 'L' WAS .375 RE-DRAWN ADDED 'H', 'I', 'K' DIM.	GL.

HARDNESS: ROCKWELL 'C' 42-50

LUGS