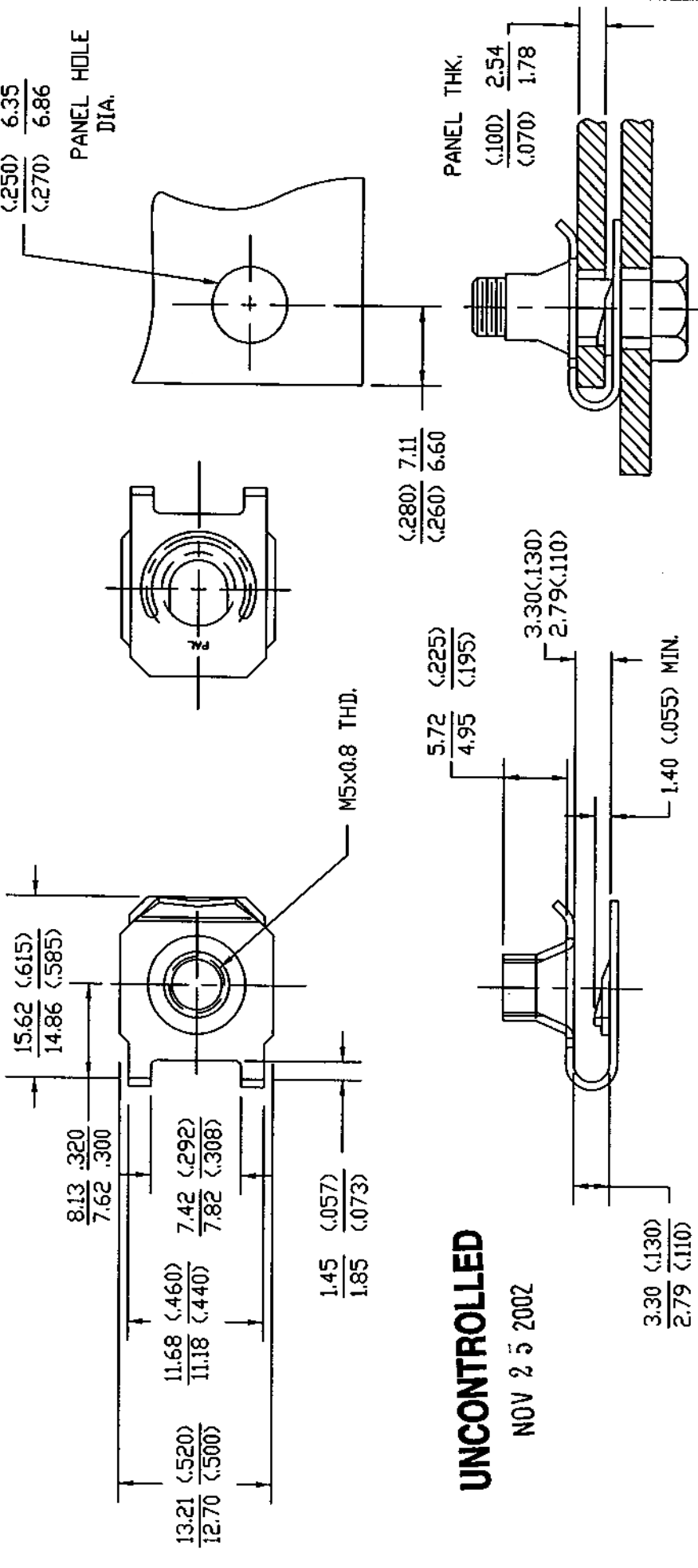


DWG LUGZ050015

FINAL INSPECTION FOR INTERNAL THREADS SHALL CONSIST OF A STANDARD THREAD GAUGE FOR PARTS WITH ELECTROPLATED OR CHEMICALLY DEPOSITED FINISHES. FOR OTHER FINISHES, THREAD INSPECTION WILL MEET A GO TEST CONDUCTED WITH AN UNCOATED (OR ZN PLATED) MATING BOLT, AND A NO GO TEST CONDUCTED WITH THE THREAD ELEMENT OF A STANDARD GAUGE.



**UNCONTROLLED**

NOV 25 2002

ALL DIMENSIONS ARE IN MM. ENGLISH EQUIVALENTS ARE IN PARENTHESES.

<p><b>TINNERMAN PALNUT</b> ENGINEERED PRODUCTS, LLC MOUNTAINSIDE, NJ</p>		<p>PALNUT ON SERT PUSHNUT</p>
<p>TITLE PALNUT MULTI-THREAD NUT 'U' TYPE SHORT CLIP STYLE M5X0.8 THD, 1.78-2.54 PANEL</p>		
<p>MATERIAL: #1050 SPRING STEEL .66(.026)THK.</p>		<p>RELEASED</p>
<p>HARDNESS: ROCKWELL C42-50</p>		<p>SCALE 2:1</p>
<p>THREAD CLASS-6H</p>		<p>DRAWN BY: BAD DATE: 6/18/87 PART: LUGZ050015</p>
<p>DESCRIPTION</p>		<p>CHECKED: <i>PMR</i> DWG: LUGZ050015 APPROVED: <i>WB</i></p>
<p>DATE</p>	<p>REV</p>	<p>BY</p>
<p>10/31/02</p>	<p>A</p>	<p>ADDED 3.30/2.79 DIM. PER ECO #303</p>
<p>12/21/99</p>	<p>-</p>	<p>ADDED THREAD GAUGE CRITERIA</p>
<p>10/5/88</p>	<p>-</p>	<p>250/270 WAS .242/.272 PER EON 699</p>
<p>8/27/87</p>	<p>-</p>	<p>ADDED APPLICATION SKETCH</p>

Controlled copy must be in Red