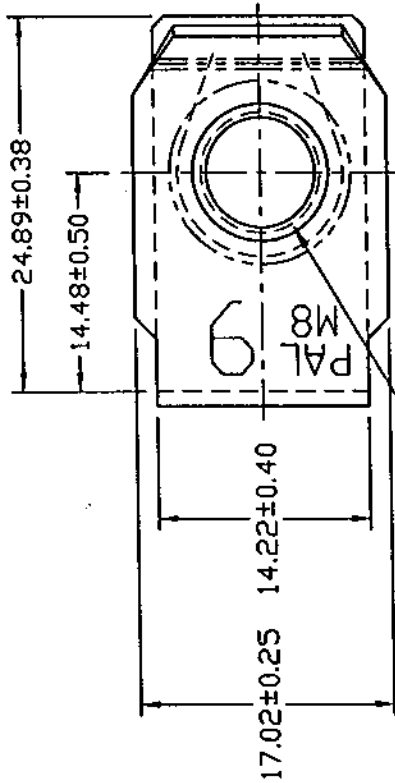


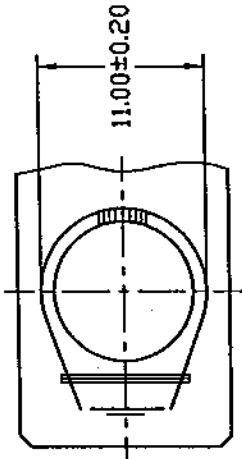
DWG

LUGS080025

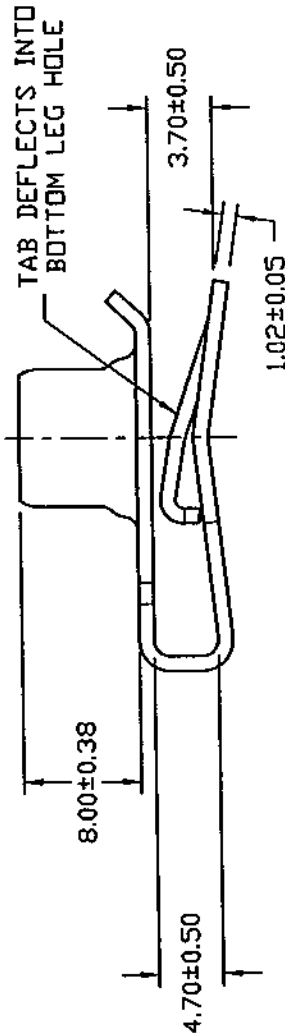
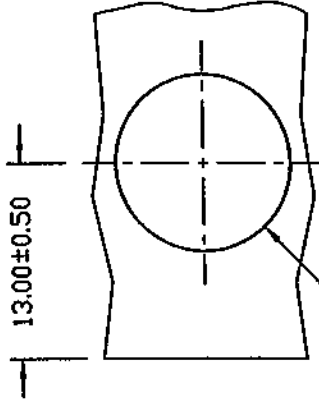
FINAL INSPECTION FOR INTERNAL THREADS SHALL CONSIST OF A STANDARD THREAD GAUGE FOR PARTS WITH ELECTROPLATED OR CHEMICALLY DEPOSITED FINISHES. FOR OTHER FINISHES, THREAD INSPECTION WILL MEET A GO TEST CONDUCTED WITH AN UNCOATED (OR ZN PLATED) MATING BOLT, AND A NO-GO TEST CONDUCTED WITH THE THREAD ELEMENT OF A STANDARD GAUGE.



M8x1.25 6H  
THREAD



PANEL HOLE  
11.70±0.38Ø



**UNCONTROLLED**  
MAY 1 0 2002

PANEL THICKNESS  
.80/4.00

PAL®	PALNUT®	ON SERT®	PUSHNUT®
<b>TITLE</b>			
M8 X 1.25 MULTI-THREAD 'U' NUT (SHORT) FOR 0.80/4.00 PANEL THICKNESS			
<b>DRAWN</b>	CNCas'	<b>RELEASED</b>	<b>SCALE</b>
<b>DATE</b>	5/23/01	<b>PART No</b> LUGS080025	<b>NONE</b>
<b>CHECKED</b>	<i>PLA</i>	<b>DWG No.</b>	
<b>APPROVED</b>	<i>PLA</i>		

<b>TINNERMAN PALNUT</b> ENGINEERED PRODUCTS, LLC	
<b>MATERIAL:</b> SPRING STEEL -SAE1050	<b>HARDNESS:</b> ROCKWELL C 42-50

<b>Controlled copy must be in Red</b>			
<b>DATE</b>	<b>REV</b>	<b>DESCRIPTION</b>	<b>BY</b>
5/23/01	A	EDGE2074 THREAD PROPERTY CLASS DESIGNATION ADDED. DRWG ISOLATED FROM LUGS-METRIC DRAWING.	CNC

LUGS080025