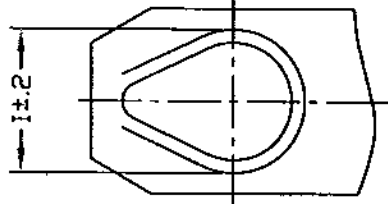
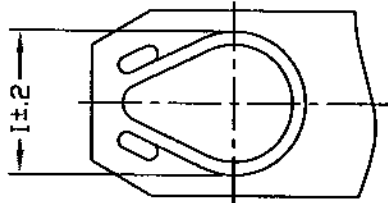


DWG

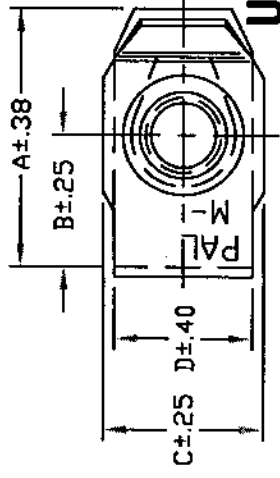
LUGZ-METRIC



TYPE 1



TYPE 2

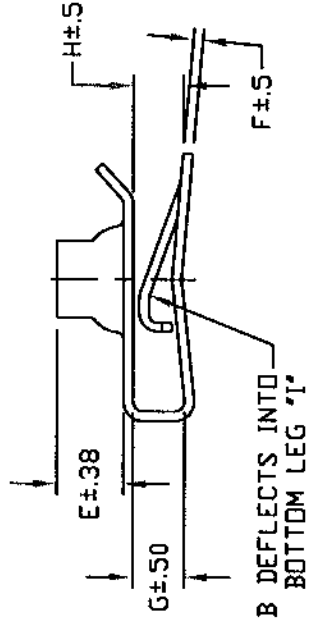


PANEL HOLE  
DIA.  $L \pm 0.38$

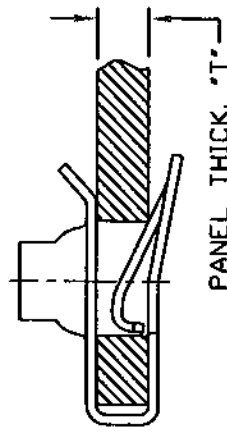
$K \pm 0.5$

**UNCONTROLLED**

CONTROLLED  
AUG 18 2000



TAB DEFLECTS INTO  
BOTTOM LEG 'T'



PANEL THICK. 'T'  
ASSEMBLY

FINAL INSPECTION FOR INTERNAL THREADS SHALL CONSIST OF A STANDARD THREAD GAUGE FOR PARTS WITH ELECTROPLATED OR CHEMICALLY DEPOSITED FINISHES. FOR OTHER FINISHES, THREAD INSPECTION WILL MEET A GO TEST CONDUCTED WITH AN UNCOATED (OR ZN PLATED) MATING BOLT, AND A NO-GO TEST CONDUCTED WITH THE THREAD ELEMENT OF A STANDARD GAUGE.

PART NO.	SCREW SIZE	A	B	C	D	E	F	G	H	I	PANEL			DESIGN TYPE
											K	L	T	
LUGZ 002112	M6 x 1	23.37	13.72	14.22	12.60	6.10	0.89	4.70	3.70	9.50	12.00	10.30	0.8-3.81	1
LUGZ 002241	M6 x 1	23.37	13.72	14.22	12.60	6.10	0.89	4.70	3.70	9.50	12.00	10.30	0.8-3.81	2

**TINNERMAN PALNUT**  
ENGINEERED PRODUCTS, LLC

MATERIAL:  
#1050 SPRING STEEL

HARDNESS: ROCKWELL C 42-50

TITLE: PALNUT MULTI-THREAD NUTS  
'U' TYPE,  
SHORT CLIP STYLE

DRAWN:	DMF	RELEASED	SCALE
DATE:	12/1/87	PART NO.:	NONE
CHECKED:	<i>C. J. T.</i>	DWG NO.:	
APPROVED:	<i>[Signature]</i>		

DATE REV

DESCRIPTION

BY

DESCRIPTION

DESCRIPTION

DESCRIPTION