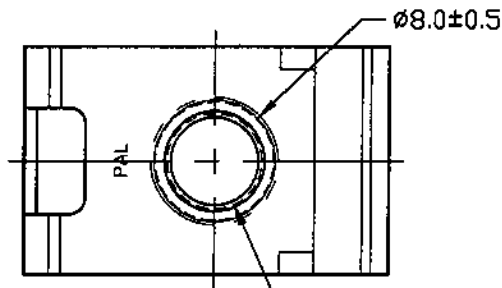


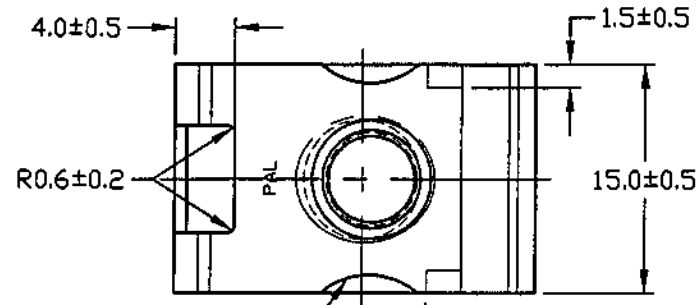
DWG

LUGS061512

FINAL INSPECTION FOR INTERNAL THREADS SHALL CONSIST OF A STANDARD THREAD GAUGE FOR PARTS WITH ELECTROPLATED OR CHEMICALLY DEPOSITED FINISHES. FOR OTHER FINISHES, THREAD INSPECTION WILL MEET A GO TEST CONDUCTED WITH AN UNCOATED (OR ZN PLATED) MATING BOLT, AND A NO-GO TEST CONDUCTED WITH THE THREAD ELEMENT OF A STANDARD GAUGE.

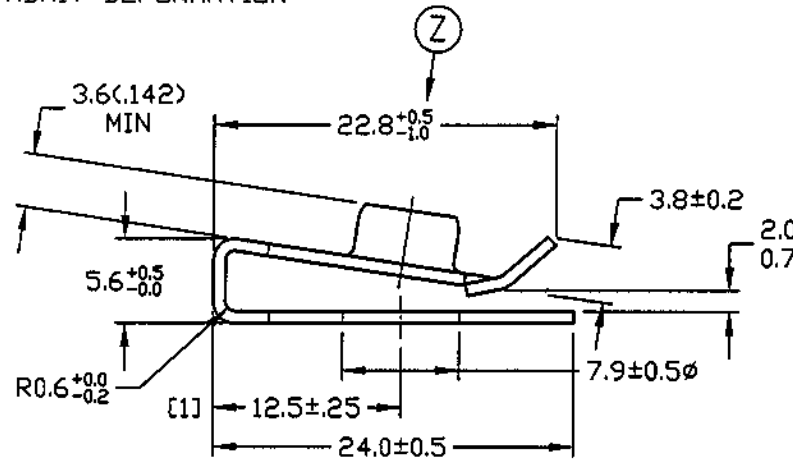
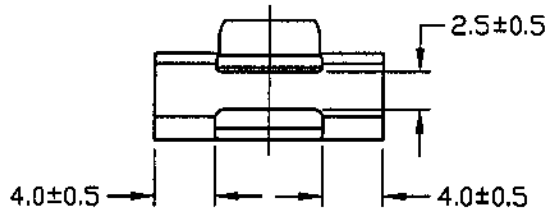


ØM6 THREAD  
VIEW "Z"



ADMIT DEFORMATION

**UNCONTROLLED**  
MAY 10 2002



ACTUAL SIZE



NOTES:

[1] DIMENSION REQUIRES STATISTICAL CAPABILITY TO 1.67 cpk.

**TINNERMAN PALNUT**  
ENGINEERED PRODUCTS, LLC

MATERIAL:  
SPRING STEEL-0.8-SAE1050

HARDNESS: Rc 44-50

PAL® PALNUT® ON SERT® PUSHNUT®

TITLE  
'U' NUT TYPE  
M6x1.0  
MULTI-THREAD NUT

DRAWN:	MS	RELEASED	SCALE
DATE:	1/30/01	PART No: LUGS061512	NONE
CHECKED:	COCAS 5/17/01	DWG No.	
APPROVED:	WP 5/17/01	LUGS061512	

DATE	REV	DESCRIPTION	BY
5/17/01	B	ECO211: HARDNESS Rc 44-50 WAS 30N 56-68 3.8 ± 0.2 WAS 3.8	CNC
5/7/01	A	ECO210: STAMP SIZE REVISED.	CNC