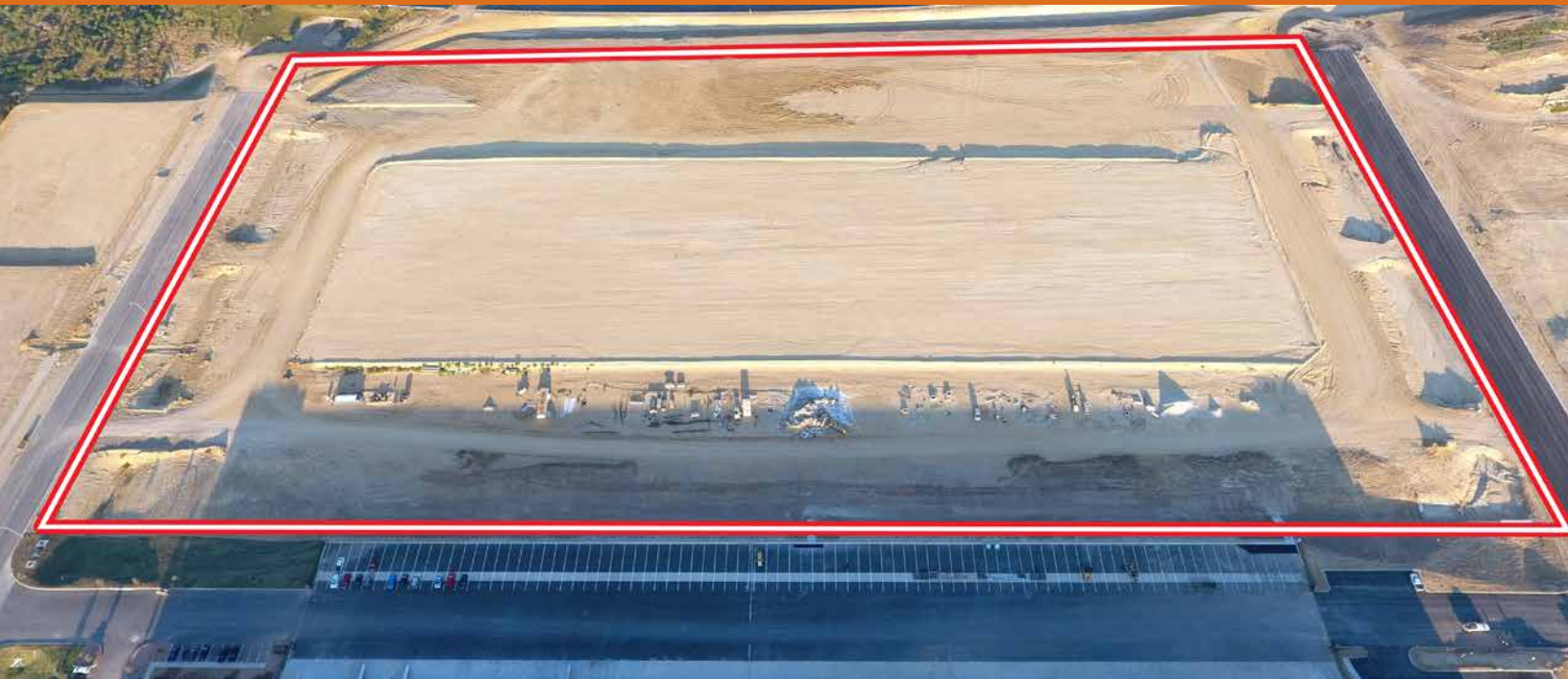




AVAILABLE FOR LEASE | PHASE 1 BUILDING #2 - 423,280 SQUARE FEET



» BUILDING FEATURES:

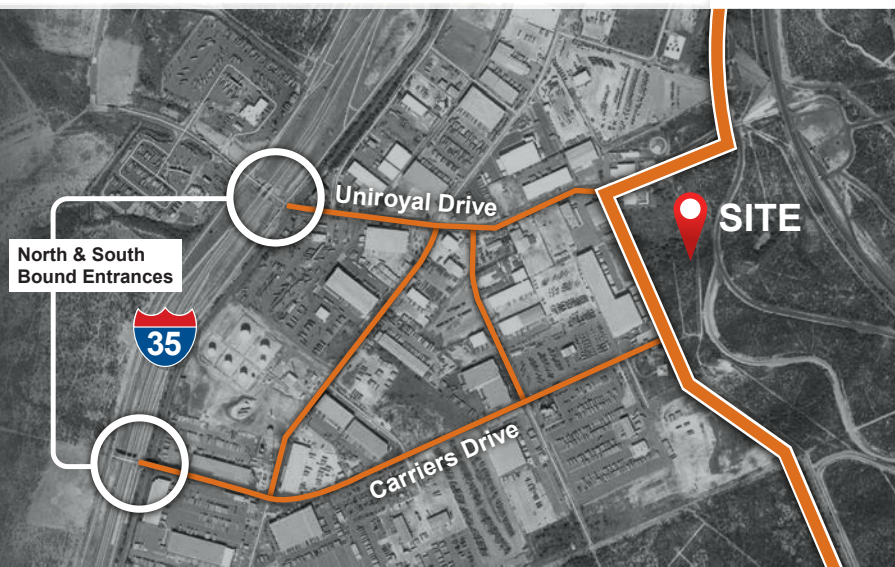
- **Clear Height:** 32'
- **Sprinkler System:** ESFR
- **Loading:** 120 Dock High Door Positions
 - Dock Packages to Suit
 - 4 Ground Level Doors
- **Warehouse Lighting:** To Suit
- **Truck Court:** 190'-245' Clear & Fully Secured
- **Trailer Parking:** 242 Spaces
- **Auto Parking:** 208 Spaces

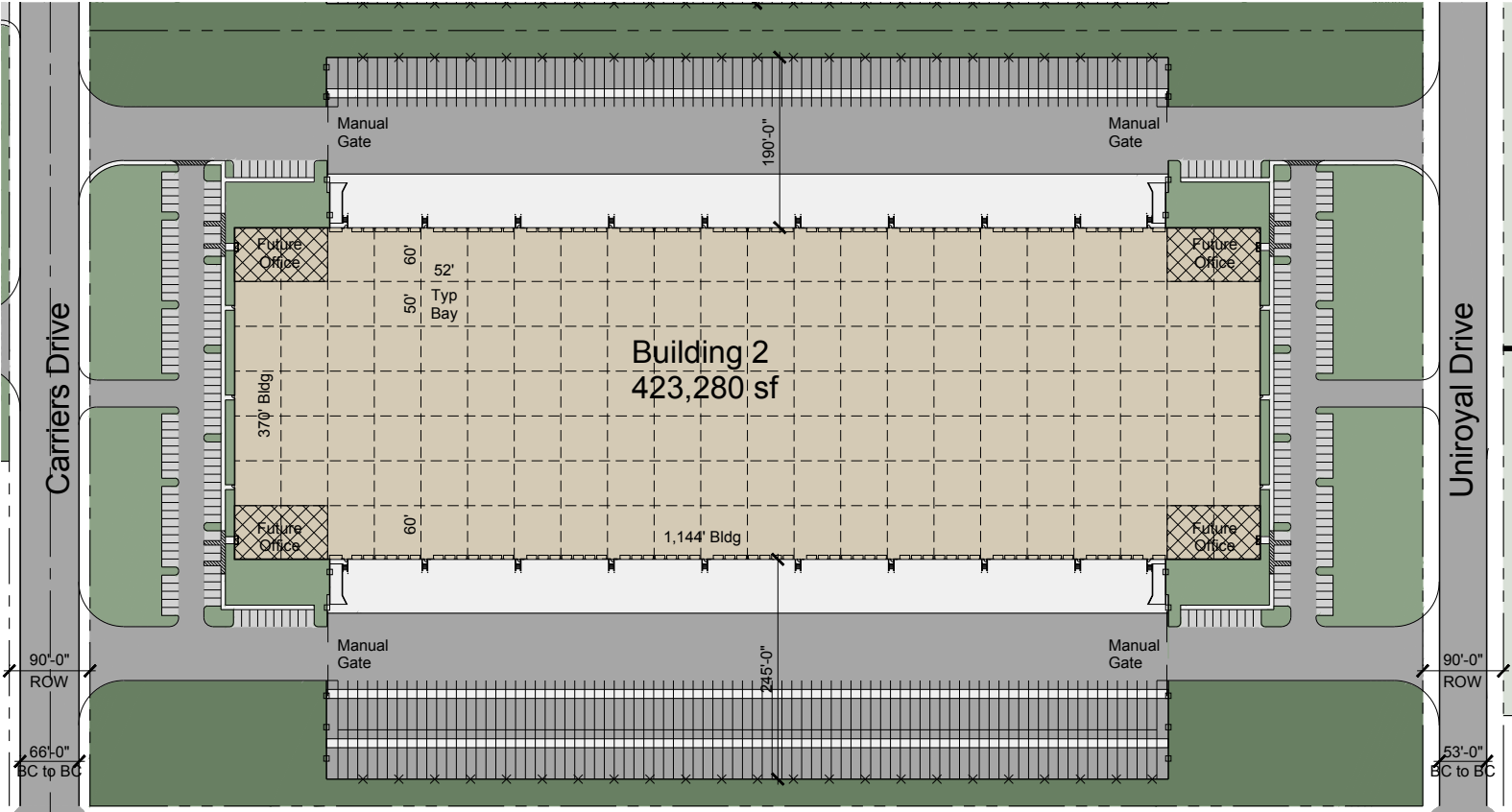
1402 Carriers Drive, Building #2, Laredo, TX



» PORT GRANDE FEATURES:

- Up to 2 Million SF+ Buildings
- Expansion Capabilities
- Immediate access to Union Pacific Intermodal
- 10 miles to Commercial Border Crossings
- Fully Gated and Secured Building
- Lot Sales Available
- 1 Acre - 500 Acres Available





AVAILABLE FOR LEASE | PHASE 1 BUILDING #2 - 423,280 SQUARE FEET

FOR ADDITIONAL INFORMATION:

Kyle Valley - 562.948.4339
kylevalley@majesticrealty.com

Carlo Molano - 956.717.9090
carlom@forumcre.com

Thomas B. Simmons - 562.948.4347
tsimmons@majesticrealty.com



**MAJESTIC
REALTY CO.**

1410 Medical Loop • Suite 1B • Laredo, Texas 78045-9998
Tel: 956.717.9090 • www.forumcre.com

13191 Crossroads Parkway North • Sixth Floor • City of Industry, CA 91746-3497
Tel: 562.692.9581 • **Fax:** 562.695.2329 • www.MajesticRealty.com



This statement is based upon information which we believe to be correct and is obtained from sources we regard as reliable but we assume no liability for errors or omissions therein.