

Available for Lease
16,200± SF Retail/
Warehouse

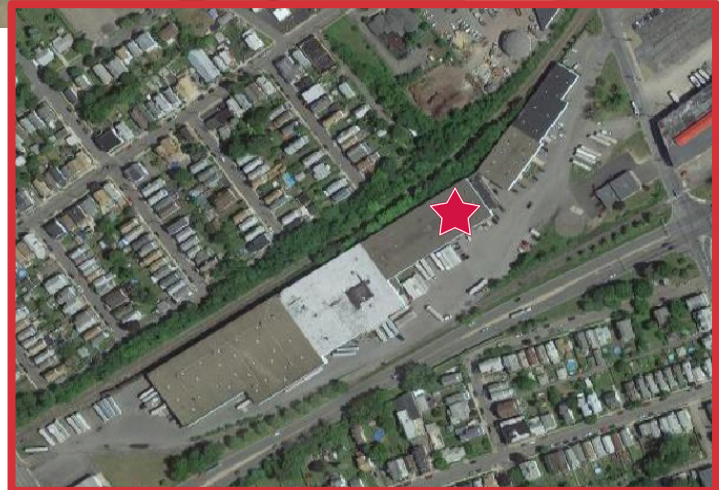


43 Conyngham Avenue

Wilkes Barre, Pennsylvania

Property Description

- 16,200± SF retail/warehouse space available
- (2) dock doors
- (1) dock door with drive-in ramp
- Warehouse heated with suspended gas heaters
- Retail space heated and cooled with heat pump
- Power: (1) 200 Amp/120/240 volt/3 phase
(1) 200 Amp/120/240 volt/single phase



Lease Price

\$4.50 PSF NNN

For more information:

Steve Cole, SIOR Vice President

+1 570 578 8296 • steve.cole@naimertz.com

Dave Weaver, SIOR Vice President

+1 570 406 7428 • david.weaver@naimertz.com



Conveniently located off Wilkes Barre Blvd with easy access to major highway Routes 309 and 315 and Interstate 81

For more information:

Steve Cole, SIOR Vice President
+1 570 578 8296 • steve.cole@naimertz.com

Dave Weaver, SIOR Vice President
+1 570 406 7428 • david.weaver@naimertz.com

NO WARRANTY OR REPRESENTATION, EXPRESS OR IMPLIED, IS MADE AS TO THE ACCURACY OF THE INFORMATION CONTAINED HEREIN, AND THE SAME IS SUBMITTED SUBJECT TO ERRORS, OMISSIONS, CHANGE OF PRICE, RENTAL OR OTHER CONDITIONS, PRIOR SALE, LEASE OR FINANCING, OR WITHDRAWAL WITHOUT NOTICE, AND OF ANY SPECIAL LISTING CONDITIONS IMPOSED BY OUR PRINCIPALS NO WARRANTIES OR REPRESENTATIONS ARE MADE AS TO THE CONDITION OF THE PROPERTY OR ANY HAZARDS CONTAINED THEREIN ARE ANY TO BE IMPLIED.

350 Laird Street, Suite 110
Wilkes-Barre, PA 18702
+1 570 820 7700

naimertz.com