

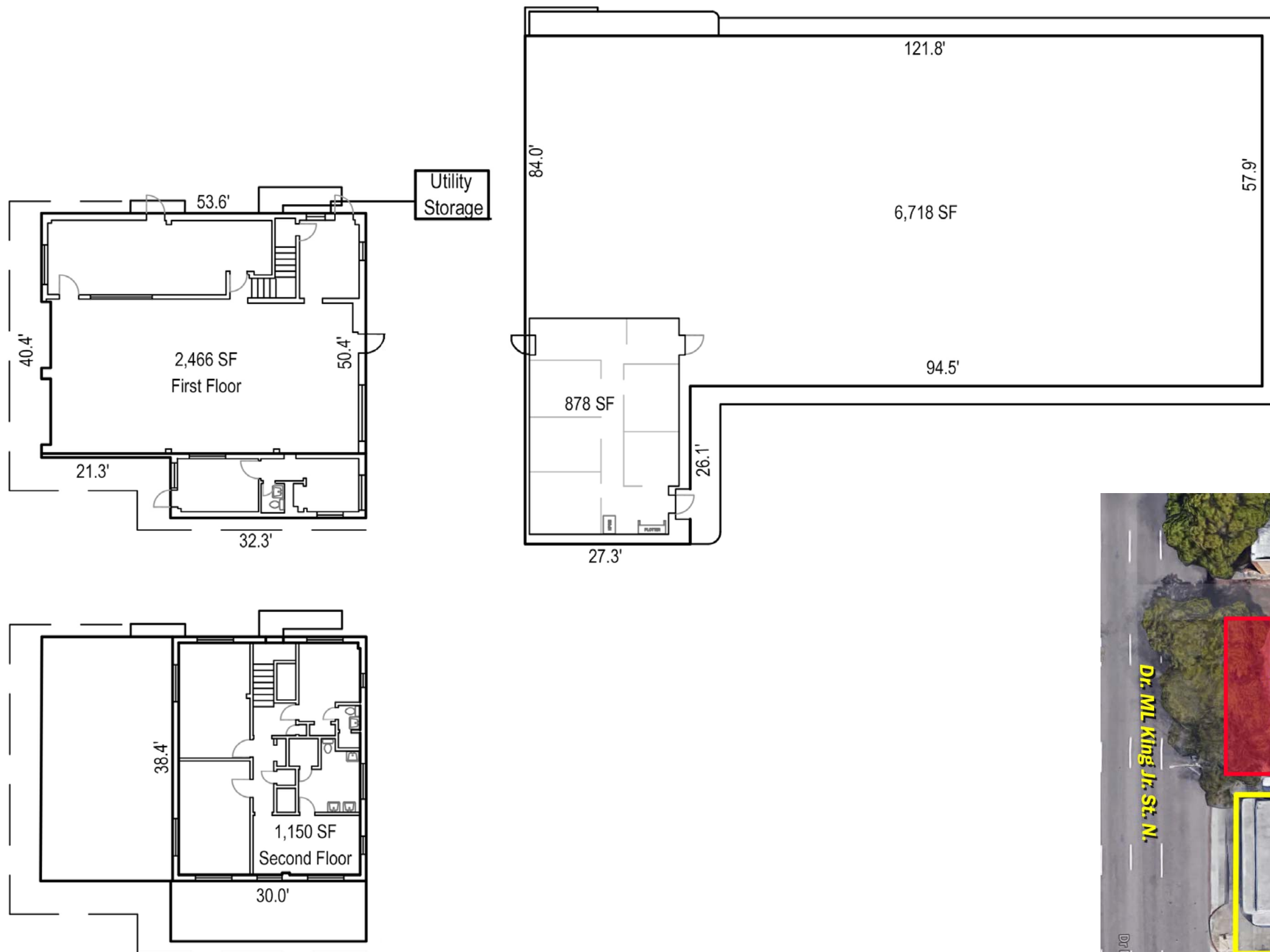
Downtown St. Pete Commercial



- 7,596 SF - 11,212 SF Commercial Space Available
- Frontage on Martin Luther King Jr. St. N.
- 6 Bay – Masonry Block Building with Drive Through Doors
- Lifts and equipment may be available
- Close to I-275 and Downtown St. Pete
- 3-Phase Power
- Zoned DC-2: Downtown Center

Lease Rate: \$12.50/SF Modified Gross

Floor Plans



Photos/Aerials

