



# Olivieri

Real Estate LLC

REALTORS • PROPERTY MANAGERS  
9550 Bormet Drive, Suite 201 • Mokena, IL 60448  
P: 815-469-6400 & 708-719-3444 • F: 708-719-3450

[www.olivierirealestate.com](http://www.olivierirealestate.com)

## **Tinley Park Industrial Building** **7601-7613 185<sup>th</sup> Street, Tinley Park, IL 60477**

**July 30, 2020**

**3-5 Year Lease, Negotiable**

Based on Rentable Square feet below, 3-1/2% increases per year

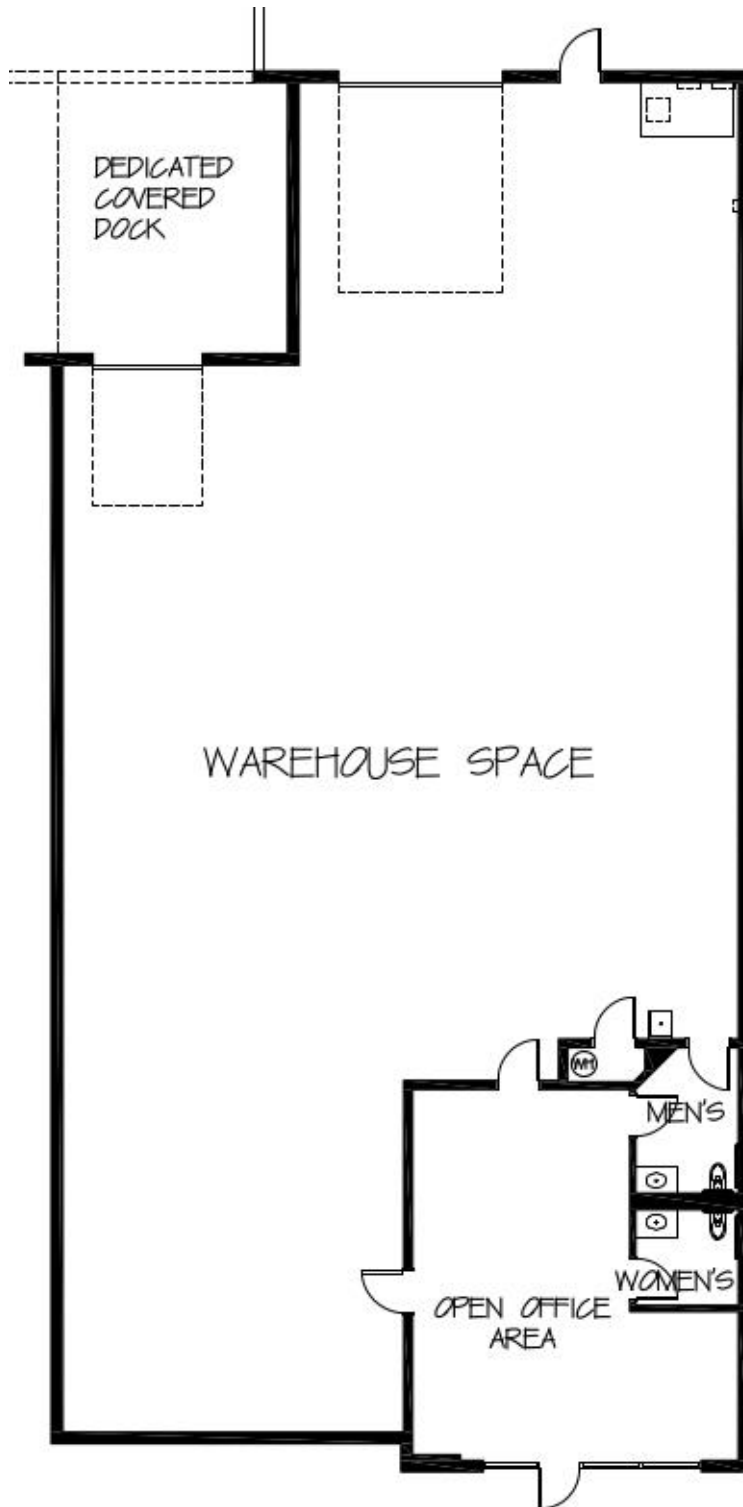
Suite #	Square Feet	Modified Gross Monthly Rental Amount*
<b>7605</b>	<b>4,700 SF</b>	<b>\$4,288.75/month</b>

Suite 7605 Description: Warehouse space with DEDICATED DOCK having a 10' tall OH door & a 14' tall OH DID!! Suite is 4,700 total sf with +-19'-6" clear ceilings for the Warehouse space, with roughly 5-10% Open Office space included. It is very hard to find Warehouse space in Tinley Park that comes with it's own dedicated dock & this one does!! All Suites have at least 2 Restrooms, 1 Private Drive-In OH door & 1 Private Dock w/Leveler.

\*Please note survey may be different than sf shown above. Prices are subject to change without notice and tax stop will be included. Approximate Parking Ratio is 1.8/1,000 SF.



**EXPERTS AT OPENING DOORS**



SUITE 7605 AVAILABLE  
4,700 SF W/10% OFFICE

NOT TO SCALE



K:\REAL ESTATE\PROPERTY GROUPS\JANUS PROPERTIES LLC\7601 W. 185TH ST., TINLEY PARK - INDUSTRIAL\1030 OVERHEAD\RENT-SALE FLYER\20200730\_7601-7613 TINLEY PARK\_LEASERATES.DOC