

# PDX CORPORATE CENTER EAST PHASE II

Industrial Space For Lease – 15,813 Square Feet



5217 NE 158th Avenue  
Portland, Oregon 97230

## Features

### Location

- 1.5 miles east of I-205
- 2.5 miles east of Portland Airport
- Signalized access to Airport Way

### Facility

- 15,813 total SF
- 1,050 SF office completed
- Available now
- 24' clear height
- 140'-160' building depth
- 50'x50' Column spacing
- 4 dock high doors
- 1 grade level door
- Ample parking
- 100 Amp, 277/480 Volt 3 phase electrical service
- Tilt-up concrete construction
- Insulated roof
- Reinforced concrete truck apron
- Metal Halide lighting

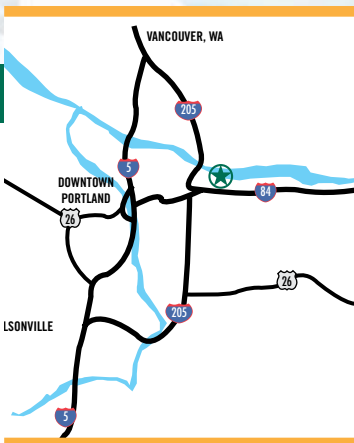
## Contact

ProLogis

26277 SW 95th Avenue, Suite 405  
Wilsonville, Oregon 97070

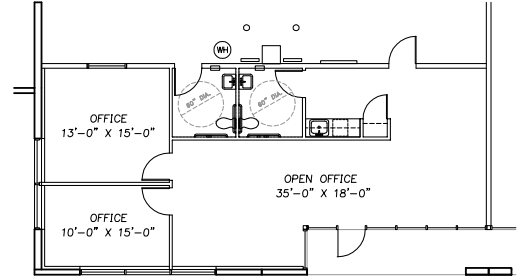
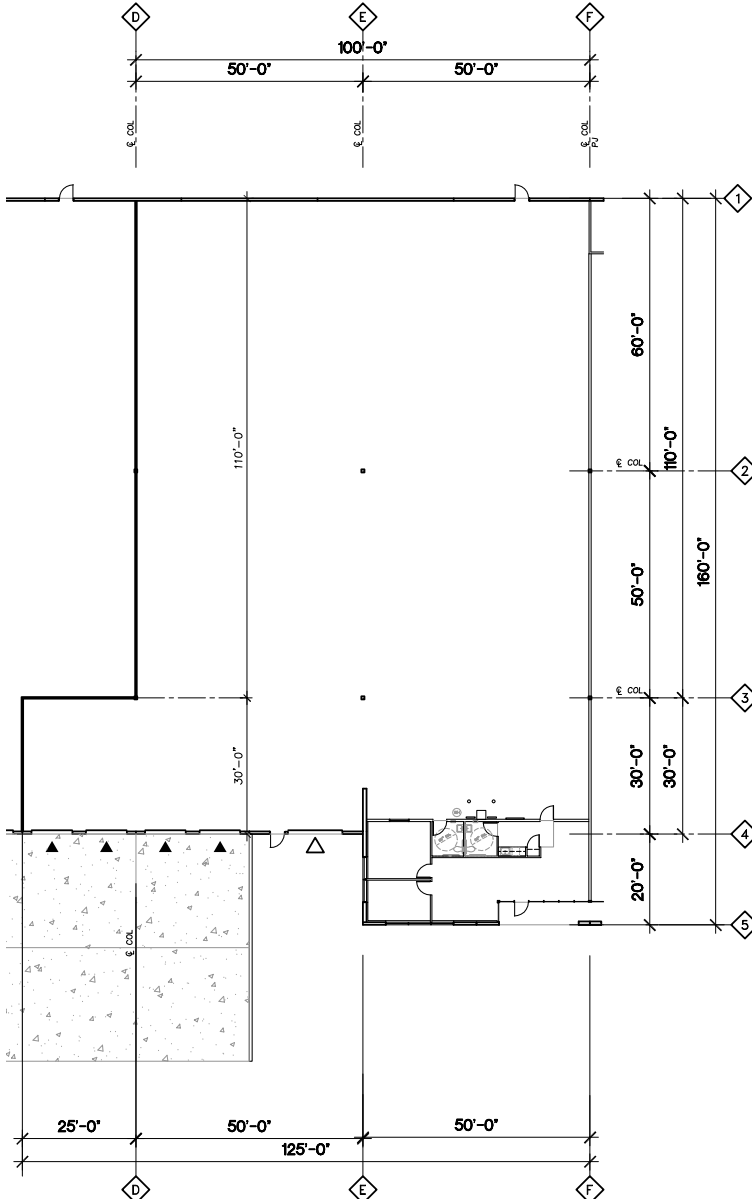
503.685.9292 Phone  
503.685.6363 Fax

[www.prologis.com](http://www.prologis.com)



# PDX CORPORATE CENTER EAST PHASE II

5217 NE 158th Avenue, Portland, Oregon 97230

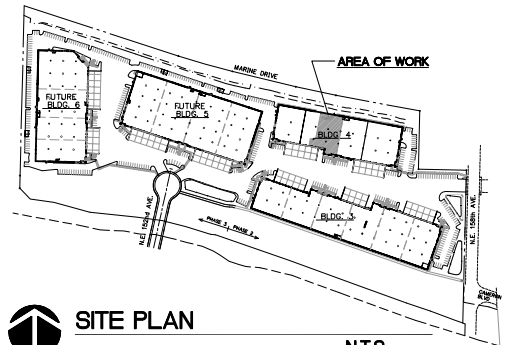


OFFICE PLAN

NT.S.

## BUILDING AREA

RENTABLE OFFICE AREA:	1,050 SF
RENTABLE WAREHOUSE AREA:	14,763 SF
TOTAL RENTABLE AREA:	15,813 SF



SITE PLAN

NT.S.

## Contact

ProLogis

26277 SW 95th Avenue, Suite 405  
Wilsonville, Oregon 97070

503.685.9292 Phone  
503.685.6363 Fax

www.prologis.com



No warranty or representation, expressed or implied, is made as to the accuracy of the information contained herein, and same is submitted subject to error and omissions.