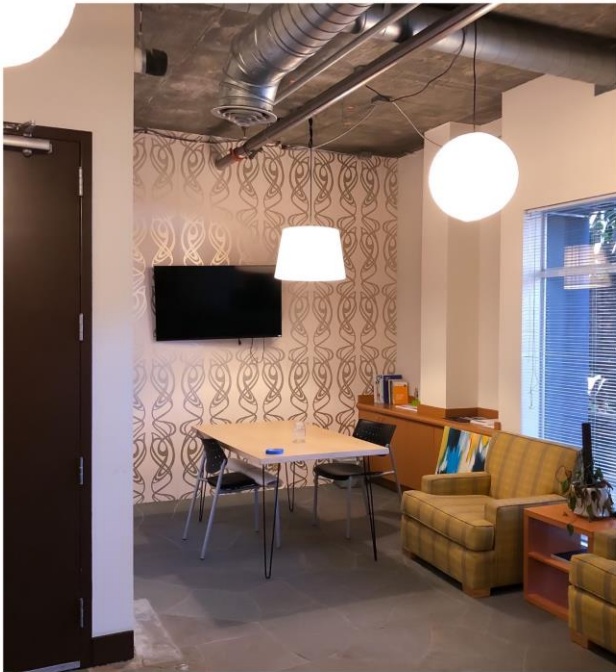


FOR LEASE

# 1808 Bellevue Ave

BELGROVE COURT | CAPITOL HILL



**Paul Jacobson**

Regency Group, Inc. Commercial Real Estate

**425-990-3460**

[paul@regencygroupinc.com](mailto:paul@regencygroupinc.com)

[www.regencygroupinc.com](http://www.regencygroupinc.com)

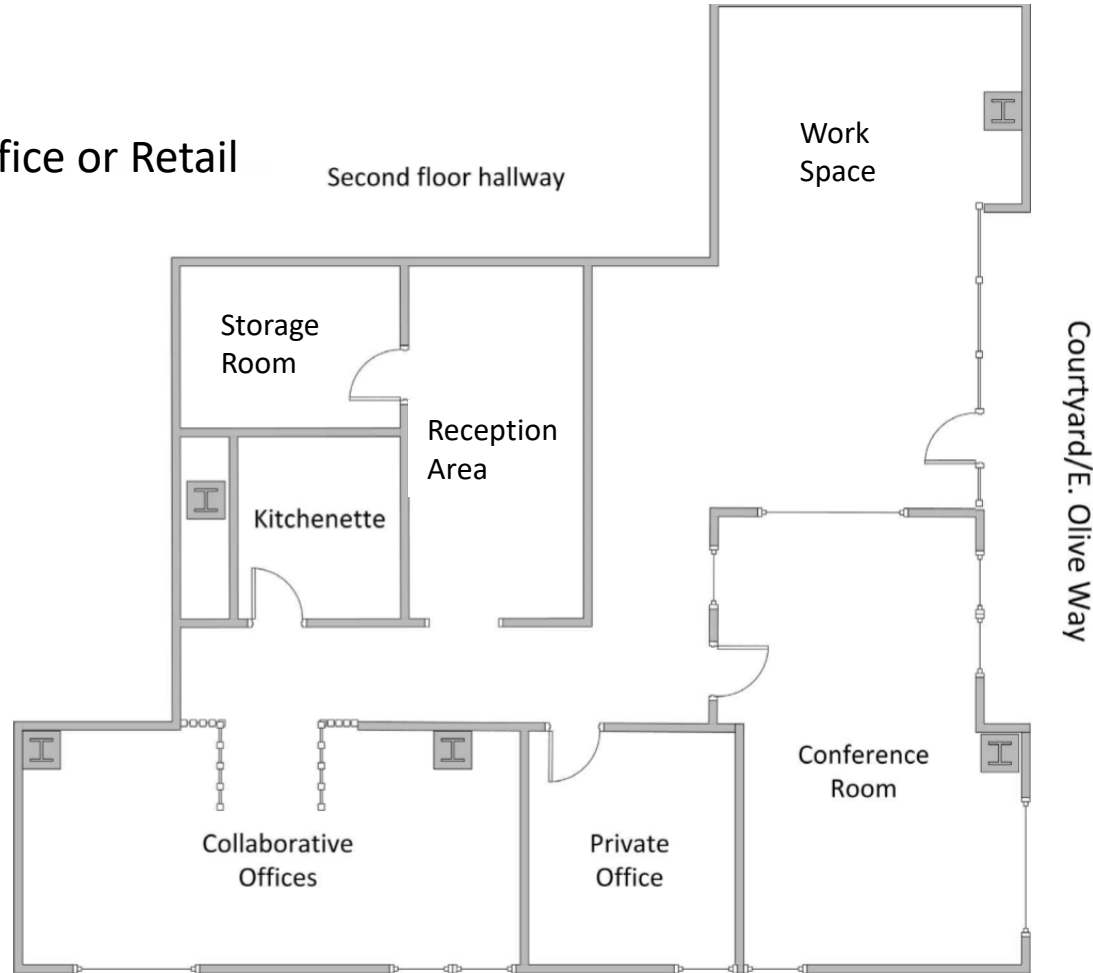
- 1100 SF Office/Retail
- \$40/SF Modified GROSS
- 1-3 private offices and conference room
- Plumbed kitchenette and storage room
- Separate large conference/open office
- Monthly garage parking \$185/stall
- Great freeway access

**FOR LEASE**

1808 BELLEVUE AVE | BELGROVE COURT | CAPITOL HILL

**1100 SF**

Creative Office or Retail



**Paul Jacobson** Regency Group, Inc. Commercial Real Estate

Call Today to Schedule a Tour

[paul@regencygroupinc.com](mailto:paul@regencygroupinc.com) [www.regencygroupinc.com](http://www.regencygroupinc.com)

**425-990-3460**

**FOR LEASE**

1808 BELLEVUE AVE | BELGROVE COURT | CAPITOL HILL



Tranquil courtyard setting  
off Olive Way

Flexible, creative space

Thriving, diverse,  
professional community

Parking available at  
\$185/stall monthly

**FOR MORE INFO  
CONTACT:**

**Paul Jacobson**  
Regency Group, Inc.  
Commercial Real Estate

**425-990-3460**

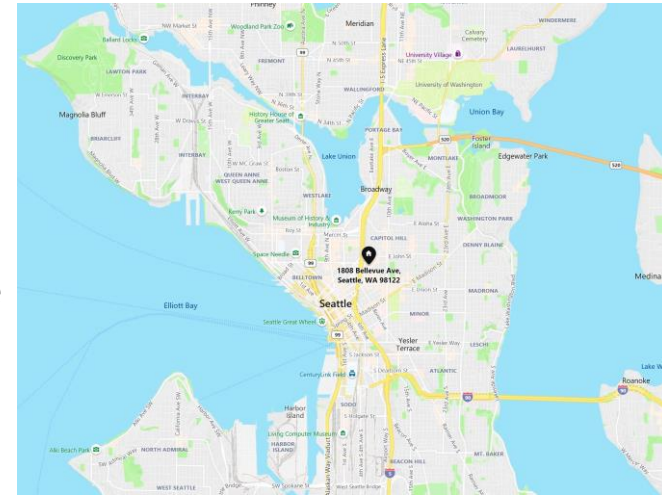
[paul@regencygroupinc.com](mailto:paul@regencygroupinc.com)

[www.regencygroupinc.com](http://www.regencygroupinc.com)

FOR LEASE

1808 BELLEVUE AVE | BELGROVE COURT | CAPITOL HILL

- Heart of Capitol Hill, one of Seattle's most economically & culturally important business districts
- Walker and transit rider's paradise
- Business, education, restaurants, arts, nightlife steps outside your door
- **Call now to schedule a tour 425-990-3460**



WALK SCORE®



99

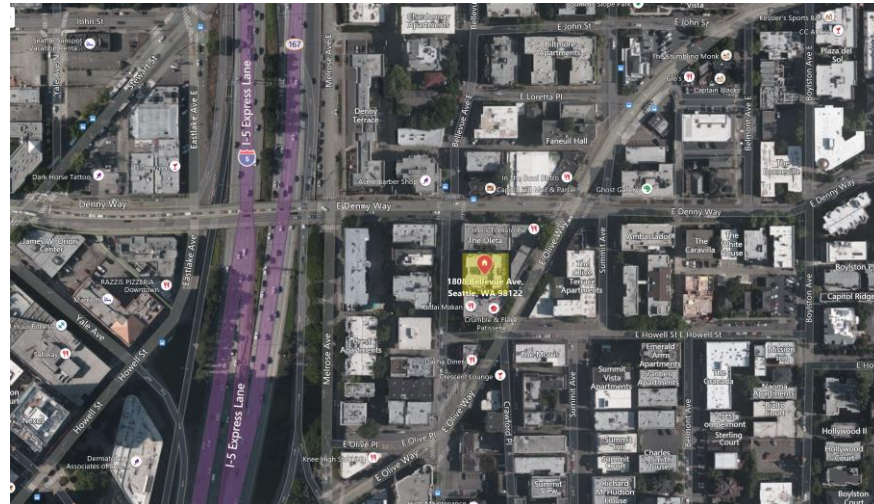
Walker's Paradise

TRANSIT SCORE®



99

Rider's Paradise



**Paul Jacobson**

Regency Group, Inc. Commercial Real Estate

**425-990-3460**

[paul@regencygroupinc.com](mailto:paul@regencygroupinc.com)

[www.regencygroupinc.com](http://www.regencygroupinc.com)