

**ELECTRICAL LINE CONTRACTOR/RAIL CONTRACTOR EQUIPMENT**

**LIVE**

**PUBLIC**

# AUCTION

**BID LIVE  
OR ONLINE**  
(SUBJECT TO TERMS AND CONDITIONS AS STATED)



**J WILLIAM FOLEY INC.  
NORTH STAR  
CONTRACTING CORP [RAIL]**

**Auction Location:**  
**340 Chestnut Ave., West Berlin, NJ 08091**  
(In the Back Building)  
*Auction location is located 30 minutes from Philadelphia*

**WEDNESDAY, APRIL 29<sup>TH</sup>, 2015 • 10 AM EDT**

**Equipment Location: 340 Chestnut Avenue • West Berlin, NJ 08091**  
**Rail Equipment Located at: 36 Haven Avenue • Mount Vernon, NY 10553**



**Only  
29,000 Miles**

**Directions to Auction Location:** Off Route 73, head East on Chestnut Ave. for 1 mile.  
Destination is on the right.

**Auctioneer's Note:**

Large Commercial Electrical Line Contractor and Railroad Maintenance Company – Multi-Million Dollar Valuation - Digger Derricks, Bucket Trucks, Excavator, Loader Backhoes, Dozer, Semi Crane and other Heavy Trucks, Specialty Pullers, Tensioners, Many Types of Trailers, Passenger Vehicles, Pickup Trucks, Air Compressors, Attachments, 1000's of lots of support tools and equipment, miscellaneous construction & shop tools, plus much more!!

**No Minimums & No Reserves.**



**Only  
446 Hours**



**Only  
26,000 Miles**



*Selling Assets  
Across North America*

**Can't Make it to the Auction?  
BID LIVE ONLINE!**

**proxibid** 877-505-7770  
www.proxibid.com

In Conjunction With



Reichbros.com

**1-800-527-8243**



**WESTERN MICHIGAN**  
3450 12TH ST.  
WAYLAND, MI 49348  
(616) 261-4982

**NORTHERN MICHIGAN**  
210 NORTH GRACE ST.  
MCBAIN, MI 49657  
(231) 825-2175

**OHIO OFFICE**  
9435 WATERSTONE BLVD. STE 140  
CINCINNATI, OH 45249  
(216) 732-9952

**EASTERN MICHIGAN**  
2851 JAMES P. COLE BLVD.  
FLINT, MI 48505  
(248) 627-5200

**DETROIT METRO**  
2000 TOWN CENTER, STE 1900  
SOUTHFIELD, MI 48075  
(248) 508-4683

**HEADQUARTERS - GR METRO** - 601 GORDON INDUSTRIAL CT., BYRON CENTER, MI 49315 • (616) 538-0367

**FOR FULL COLOR PICTURES AND ADDITIONAL INFORMATION, SEE OUR WEBSITE AT 1800LASTBID.com • EMAIL ADDRESS: info@1800lastbid.com**



# LIVE PUBLIC AUCTION

**NO MINIMUMS • NO RESERVES**

**Auction Location:**  
**340 Chestnut Ave., West Berlin, NJ 08091**  
**(In the Back Building).**  
**Auction location is located 30 minutes from Philadelphia**

**Auction Contact:**  
**Chuck Ranney**  
**616-560-0839 or**  
**Chuck@1800lastbid.com**



**WEDNESDAY, APRIL 29<sup>TH</sup>, 2015 • 10 AM EDT**

**For full-color pictures and info: See our website at 1800lastbid.com**



**2 of 3  
55' Bucket  
Trucks**



**760 Hours**



**MISCELLANEOUS EQUIPMENT**

■ Featuring 1000's of Specialty Electrical support tools and equipment! MUST SEE AUCTION CATALOG LISTING – Power tools, crimpers, hot sticks, pulleys, Greenlee, Milwaukee, benders, attachments, parts, shop tools, plus much more too many to list See photos for representative sample!

■ **Plus Much More**

**EQUIPMENT LIST SUBJECT TO CHANGE**



**EXCAVATION EQUIPMENT**

**HYDRAULIC EXCAVATOR**

- Caterpillar 307 C, 2006, only 760 actual hours, 2006, 773" Stick, 13'5" max digging depth; 10,000 #, 55 HP Mitsubishi Diesel, Cab, Excellent condition, SN: CAT0307CPBNE01384

**CRAWLER TRACTOR/DOZER**

- Caterpillar D5G LGP Crawler/ Tractor Dozer, only 446 actual hours, 2007, EROPS, with sweeps, LGP, 6-way blade, rear winch, excellent condition, SN: CAT00D5GARKG02744
- Skid Steer Hyd. Hammer

**TRACTOR LOADER BACKHOES**

- 1998 John Deere 310 SE Turbo 4x4 Backhoe Loader, JD Engine 405TT054, 4.5 Liters, Outriggers, Front Bucket, Rear Backhoe Attachment, Enclosed Cab, All Terrain Air Tires, SN: T0310SE850658
- CAT 446B Backhoe Loader, 2FG07111 Engine, Outriggers, Front Bucket, Rear Backhoe Attachment, Pneumatic Tires, Enclosed Cab, Turbo, 4x4, SN: 5BL02193
- (3) Asst Excavator and Backhoe Buckets

**TRENCHERS**

- Ditch Witch Trencher DW RT 400 Combination Construction Machine, S/N 3X0099 Manufactured 2005, equipped with front backhoe, Model A322, S/N 1Z0688, manufactured 2005, rear trencher attachment, Model H350, S/N 8Z0084, new 2005, solid tires, automatic transmission, front-mounted snow plow SN: 3X0099
- 2002 Ditch Witch 3700 Multi-Purpose Trencher, Front Bucket Loader Model A322, Trencher Attachment, 4 Wheel Air Tires, Manual Transmission, Front Seat Operator Control, Snowblade, SN: 3W0648

**FORK LIFTS**

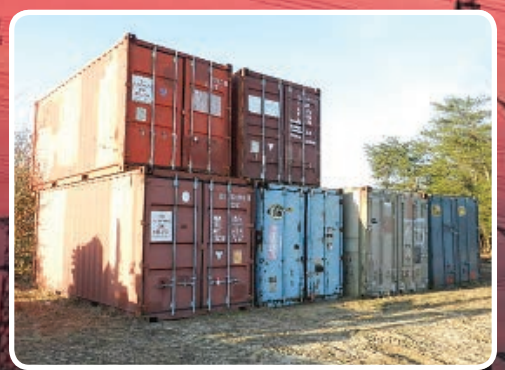
- JCB 525 Extend-A-Boom, All Terrain Forklift, 4WD, 5500# Capacity, 21' Lift, SN: 9820141L
- Hyster Fork Lift Propane, 2500lb Capacity, Dual Mast, Solid Tires, 42" Fork Length, SN: 171942D

**AIR COMPRESSORS**

- Ingersoll-Rand P250WJD Mobile Air Compressor, S/N 291836ufi359, Rated Delivery 250 CFM, Rated Pressure 100 PSI, with John Deere 40459 Diesel Engine, 2- Wheel Trailer with Tires ST225/74R15, Max Tow Speed 50 MPH
- Ingersoll-Rand P250WJD Mobile Air Compressor, S/N: 294529U11359, Rated Delivery 250 CFM, Rated Pressure 100 PSI, with John Deere 4045D Diesel Engine, 2- Wheel Trailer with Tires ST225/75R15, Max Tow Speed 50 MPH
- Kaeser M57 210CFM Sigma Mobile Air Compressor with 476 Hours, S/N 1282, New 2005, Rated Delivery 210 CFM, Rated Pressure, 100 PSI, 51 HP Diesel Engine, Tire Models ST205/75D1



**Low Miles**



**1 of 2**

**DUMP TRUCKS**

- 2005 GMC C5500 Duramax Diesel Truck with Dump Truck Attachment, only 32,355 actual miles, Crew Cab, 5 Cyl., GVWR 19,500, GAWR 8,000 Front/13,500 Rear, Rugby Tilt Dump Truck, Dual Cab, VIN: 1GDSE5325X5F26900
- 2005 GMC C7500 Truck with Dump Truck Attachment, only 15,000 actual miles, GVWR 25,950, Automatic Transmission, AM/FM, Dump Truck by Rugby, Dual Tire Rear Axle, 11R22.5 Tires, 5 Cubic Yards, VIN: 1GDJ7C1C05F521097
- 2005 GMC C4500 Duramax Diesel Truck with Dump Truck Attachment, 27,025 actual miles, 4x4, 8 Cubic Yd. GVWR 17,500, Dump Truck by Rugby, Single Tandem Rear Axle, Automatic Transmission, AM/FM, VIN: 1GDE4C3225F828115
- 2001 Ford F750XL Super Duty Cab Truck with Dump Attachment, 55,000 actual miles, GVWR 33,000, Suitable Tires 11R22.5, 7 Speed Manual Transmission, AM/FM, Dual Cab, Power Take Off, Dump Truck is Warren U551-10, Rated Capacity 5.577.5 Cubic Yards, SN: BC51348, VIN: 3FDXW7562MA08949

**BUCKET TRUCKS**

- 2008 International 4300SBA4X2 Mobile Altec Bucket Truck with Crane, Automatic Transmission, Outriggers, ALTEC AA755L, Crane Boom, 700lb Capacity Platform, 55' Platform Height, 61,351 actual miles, Tires 11R22.5, VIN: 1HTMMAAN28H417755
- 2008 International 4300SBA4X2 Mobile Altec Bucket Truck with Crane, Automatic Transmission, ALTEC AA755L Crane Boom, 700lb Capacity Platform, 55' Platform Height, 59,179 actual miles, 11R22.5 Tires, VIN: 1HTMMAAN68H417727
- 2007 International 4300SBA4X2 Mobile Altec Bucket Crane Truck, 700lbs Capacity Per Platform, 1 Platform Height 55', 58,763 actual miles, 11R22.5, VIN: 1HTMMAAN07H441972

**DIGGER DERRICK TRUCKS**

- 2007 International 7300SFA4X4 Digger Derrick Truck with ALTEC Crane, Manual Transmission, AM/FM, Single Axle Dual Rear Axle, Outriggers, Air Hose Reel, ALTEC DM47TR Telescoping Boom Crane, Max. Load Capacity 23,790lbs, Seated Rear-Mounted Operator's Control, 34, 258 actual miles, 11R22.5 Tires, VIN: 1HTWBAANX75422000
- 2007 International 7300SFA4X4 ALTEC Digger Derrick Truck and Mobile Crane, Max Load Capacity 23,790lbs, Automatic Transmission, Equipped with Outriggers, ALTEC Mobile Crane DM47TR, Drilling Auger Unit, Seated Operator's Platform, Operator's Controls 32, 684 actual miles, 11R22.5 Tires, VIN: 1HTWBAAN77J421998
- Asst Auger Bits for Digger Derricks

**BOAT**

- Carolina A Skiff 16 Dix Boat with Trailer and 25 HP Yamaha Engine

**TRACTOR TRAILERS**

- 2007 GMC 5 Ton Box Truck, 14,230 actual miles, Lift Gate, VIN: 1GDM7C1C87F402052

**TRAILERS**

**FLATBED TRAILERS/ EQUIP HAULING TRAILERS**

- 2008 Manac 12248A01 48' Flatbed Trailer, 80' Steel Ext, GVWR 33,500, GAWR 20,000, Dual Tandem Rear Axles, 95"x47", VIN: 2M51214698115777, excellent condition
- Ditch Witch Trailer, VIN: 1DSB192K0317X2128
- 2004 Ditch Witch B192K Trailer, Trailer Deck Area 74"x156", SN: 7Y183S
- 2009 Doolittle 20' 3 Ton Trailer 98lb GVWR, Trailer Bed 84" Width x 214" Length, ST225/75R15, VIN: 1DGRS20259M083774
- 2009 Doolittle 20' 3 Ton Trailer, VIN: 1DGRS20209M083777
- 1997 Dynaweld 7 Ton Flat Bed Trailer, GVWR 15,000, GAWR 5,000, GKWR 6,000, Curb Weight 4,180lbs, 96"x192", VIN: 4U141ABX9V1X34845
- 2005 Felling Trailer FT 20E, 20' Deck, GVWR 25,000, 94"x236", VIN: 5FTDE252751024781
- 2000 Brimar Trailer BK 6 Ton, VIN: 43YDC1223YC005200
- Fontaine 40' Flatbed Drop Deck Lowboy – older
- 2007 Econoline 20', VIN: 42EDPKM2571000141
- Econoline MP425DE 12 Ton Backhoe Pro Plus Trailer, Single Axle Weight 5,000, Empty Weight 5,500, Bed Length 25', Gross Weight 24,000lbs, VIN: 42EDPK43Y1000916

**REEL AND POLE TRAILERS**

- 2001 Brindle Wire Reel Carrier, 12000 lb, Trailer Hitch, Dual Rear Axle, VIN: 1L90R12231G085378
- 6 Ton Dump Trailer, VIN: 4YUUF1223XB001542
- 2 Ton Material/Wire Trailer PT 105
- Wire Trailer
- Wire Trailer - 3 Reel Sauber Wire Trailer, VIN: 1F9R22124YV048039
- 2000 Sauber Pole Trailer 4500, GVWR 18,750, GAWR 15,000, AW 3800, CC 14,950, VIN: 1F9U22013YV048038
- 2000 Pole/Reel Trailer, VIN: 1F9R22121YV048035
- 2000 Sauber Pole/Reel Trailer, VIN: 1F9R22123YV048036
- 2000 Sauber 1521-PRC Pole/Reel Trailer, GVWR 14,900, GAWR 6340, EW 5050, CC 9850, VIN:
- Pole Trailer PT105, VIN: 1B9DD0929WM2741091230

**VAN AND STORAGE TRAILERS/ CONTAINERS**

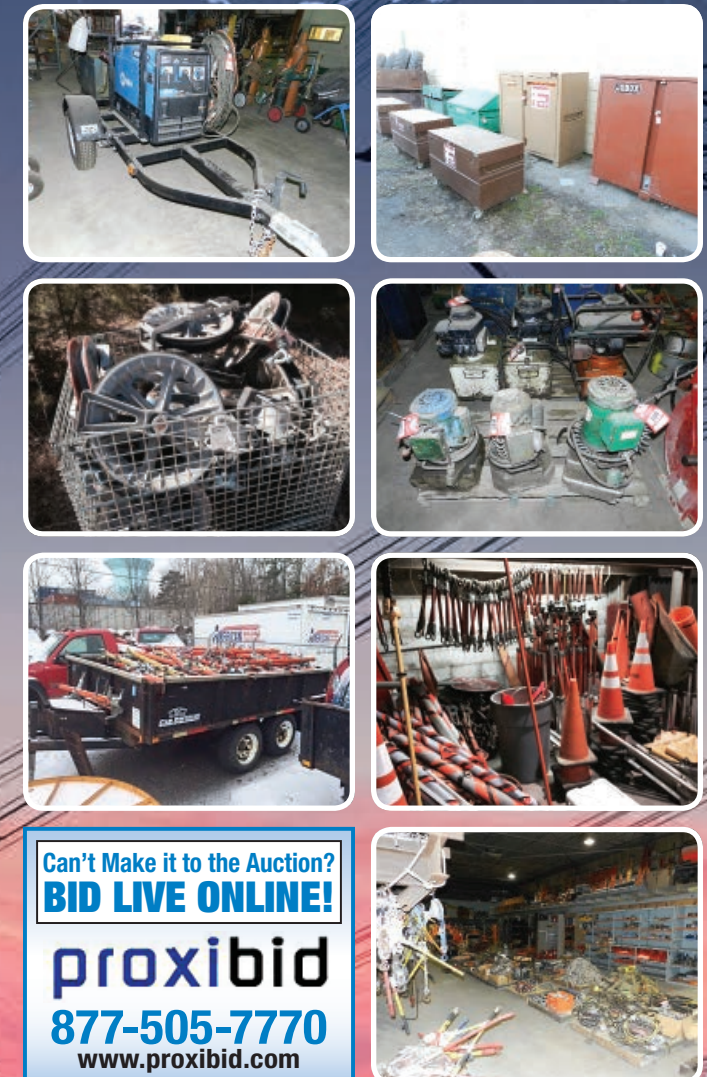
- 1978 Storage Trailer, SN: HP2639249
- 1997 45' Storage Trailer, SN: 1267
- 45' Storage Trailer, SN: 92630

■ 25' Storage Trailer, SN: CRXU276634

- 1989 Monon MS3-30ST-45W Enclosed Van Trailer, GVWR 68,000, 45' Trailer Length, Dual Axle Rear Tires, VIN: 1NNVS4520KM133422
- Storage Trailer 40', VIN: 1GRAF9021B5027701
- 1998 Trim Chassis, SS#98102131/ CB966538 hauls containers
- 76 Trim Chassis 20', P32317
- (8) Conex shipping Containers

**PASSENGER VEHICLES AND PICKUPS**

- 2011 Mercedes Benz E550, 4 Door Sedan, 5.5L V8, 4matic Transmission, Leather Heated and Cooled Seats, Steering Wheel Controls, Moon Roof, Harmon Kardon Speakers, Navigation, 81,324 Miles, VIN: WDDHF9AB6BA424128
- 2011 Freightliner Sprinter, 12,023 Miles, VIN: WCDPE7CC3B5541678
- 2010 Jeep Cherokee Laredo, 4x4, AM/FM, CD, 89,000 Miles, VIN: 1J4PR4GK4AC146219
- 2009 Cadillac STS, 4 Door Sedan, Northstar V8, Leather Heated and Cooled Seats, CD, Digital Display, Navigation, Moon Roof, Steering Wheel Controls, 147,033 Miles Showing, VIN: 1G6DL67A590125988
- 2007 Buick Lucerne, 235,000 Miles, VIN: 1G4HR57Y57U161850
- 2007 Jeep Wrangler Sahara Unlimited, 4WD, Manual 6-Speed Transmission, AM/FM, CD, 4-Door, Rear Hatch, Spare Tire, P255/70R18, 192,000 Miles, VIN: 1J4GA591X7L207731
- 2007 GMC Yukon SUV, Automatic Transmission, AM/FM, Cassette, 4 Door, Trailer Hitch, P265/70R17, 4WD, 191,000 Miles, VIN: 1GKFKT03027R215802
- 2007 GMC Envoy SUV, Automatic Transmission, AM/FM, CD, 4 Door, Trailer Hitch, P245/65R17, 190,000 Miles, VIN: 1GKDT135972189777
- 2007 GMC Yukon, Automatic Transmission, AM/FM, CD, 4 Door, Trailer Hitch, Tire P265/70R17, Miles Unknown, VIN: 1GKFK130X7R216986
- 2007 GMC Sierra 2500 HD Pickup Truck, 4WD, Automatic Transmission, AM/FM Radio, Dual Cab, with Trailer Hitch, 145,000 Miles, VIN: 1GTHK24D1E127603
- 2007 GMC Sierra Pick Up, Automatic Transmission, Pioneer AM/FM Disc Player, Trailer Hitch, P265/70R17, 158,000 Miles, VIN: 1GTEK14V57E163378
- 2006 GMC Yukon, 4WD, AM/FM, CD, Trailer Hitch, 265/70R16, 191,000 Miles, VIN: 1GKEK13T56J107032
- 2006 GMC Pick Up 2500, 160,000 Miles, 4WD, VIN: 1GTHK24266E117226
- 2005 Dodge Ram 1500 Pickup Truck, Automatic Transmission, AM/FM Radio with Cassette, Tires P245/70R17, with Trailer Hitch, 144,000 Miles, VIN: 1D7HA16K05J648539
- 2005 Dodge Ram 1500 Pick Up, Automatic Transmission, AM/FM, Cassette, 245/70R17, 85,000 Miles, VIN: 1D7HA16KX5J632669
- 2001 Chevy 2500 Silverado Pick Up, Automatic Transmission, AM/FM, Trailer Hitch, Kobalt Tool Box, 245/75R6, 252,000 Miles, VIN: 1GCGC24U11Z301789



Can't Make it to the Auction?  
**BID LIVE ONLINE!**

**proxibid**  
**877-505-7770**  
[www.proxibid.com](http://www.proxibid.com)



**Manac  
48'-80' Ext**



**Only  
12,023 Miles**



**Only  
14,000 Miles**

**NO MINIMUMS  
NO RESERVES**

**For Additional Pictures, Please Visit Our Website: 1800LASTBID.com**





601 GORDON INDUSTRIAL CT.  
BYRON CENTER, MI 49315



# LIVE PUBLIC AUCTION

## ELECTRICAL LINE CONTRACTOR/ RAIL CONTRACTOR EQUIPMENT

PRSRT STD MAIL  
U.S. Postage  
**PAID**  
Byron Center, MI  
Permit No. 19

**DATED  
MATERIAL**

In Conjunction With



Reichbros.com

APRIL						
S	M	T	W	T	F	S
			1	2	3	4
5	6	7	8	9	10	11
12	13	14	15	16	17	18
19	20	21	22	23	24	25
26	27	28	29	30		

**NO MINIMUMS • NO RESERVES**



**J WILLIAM FOLEY INC.  
NORTH STAR  
CONTRACTING CORP [RAIL]**

### Auction/Equipment Location

**(Back of Building):**

340 Chestnut Avenue  
West Berlin, NJ 08091

### **Directions to Auction Location:**

Off Route 73, head East on Chestnut Ave.  
for 1 mile. Destination is on the right.



From Google Maps

**Only  
30 Minutes  
from  
Philadelphia  
Airport**

### ***Hotels Near Auction Location:***

**Wingate by Wyndham  
Voorhees Mt. Laurel**  
1000 Laurel Oak Road  
Voorhees Township, NJ 08043

**Hampton Inn**  
121 Laurel Oak Road  
Voorhees Township, NJ 08043

## AUCTION SALE TERMS AND CONDITIONS

### **INSPECTION:**

Tuesday, April 28 from 9am-5pm or  
Auction Day beginning at 8am. Note: Rail  
Construction Equipment Inspection will  
require 48 hour notice.

### **REMOVAL:**

Auction day or Thursday, April 30, Friday,  
May 1 & Saturday, May 2 from 9am-4pm. A  
loader will be available.

### **SALES TAX:**

A 7% sales tax will be collected for  
everything except titled items for this auction  
unless you have valid written exemption  
acceptable to Auctioneer.

### **TERMS:**

All items sell AS IS WHERE IS WITH NO  
REPRESENTATIONS OR WARRANTIES  
WHATSOEVER. There shall be no guarantees,  
representations or warranties expressed or  
implied, statutory or otherwise, including  
without limitation as to the merchantability  
or fitness for any particular purpose with  
regards to any items offered in this sale.  
No Minimums or Reserves.

### **PAYMENT:**

Complete payment auction day by Cash,  
Wire Transfer, Cashiers Check, Visa,  
Mastercard, Discover or American Express.  
Checks will be accepted at auction co.  
discretion. All checks MUST have a bank  
letter of credit GUARANTEEING payment  
to MIEDEMA AUCTIONEERING INC. for  
this auction and the amount of funds being  
guaranteed. See guarantee form below. Fax  
will be available to accept guarantees. All  
written material is subject to change.

**ANNOUNCEMENTS MADE THE DAY OF  
THE SALE TAKE PRECEDENCE OVER  
PRINTED MATERIAL.**

### **BUYERS PREMIUM:**

A 15% Buyers Premium is in effect for this  
auction. A 3% Service Fee will be applied for  
all Credit Card transactions.

### **BANK GUARANTEE FORM**

(BANK LETTERHEAD)

DATE: \_\_\_\_\_

Our bank, (banks name), irrevocably will  
guarantee any checks written to MIEDEMA

AUCTIONEERING INC. for the purchase of  
items at the J William Foley Inc. North Star  
Rail Corp. Live Public Auction in West Berlin,  
NJ on Wednesday, April 29, 2015 by (you or  
your company name) from account number  
(fill in number) up to the total amount of  
\$\_\_\_\_\_.

Sincerely,  
(Bank officer's name and title)

### **ATTN: AUCTION BUYERS:**

If you regularly attend our auctions and want  
a VIP card for quick registration, call our  
office today at 1-800-527-8243.

**Contact Information  
Chuck Ranney  
616-560-0839  
Chuck@1800lastbid.com**