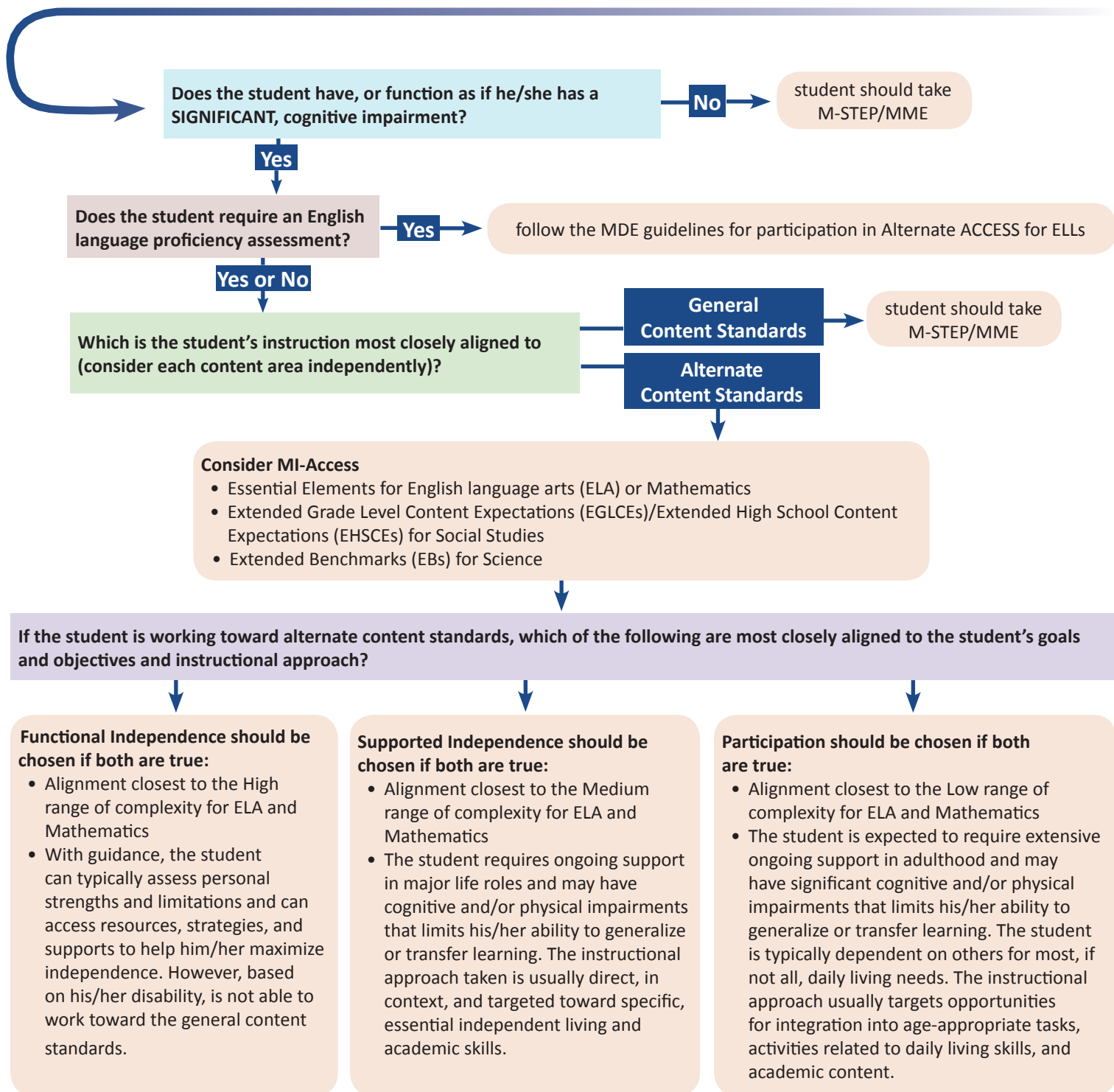


# Should My Student Take the Alternate Assessment?

MI-Access is currently Michigan's alternate assessment based on alternate achievement standards. The following guidance is helpful in considering if a student should be taking the alternate assessment or the general assessment.

It is the role of the Individualized Education Program (IEP) team to determine which assessment a student should take. The following guiding questions are provided for the IEP team to consider:



If the IEP team determines that MI-Access is the most appropriate state level assessment for any given student, the school must provide information to that student's parents regarding any implication this decision may have on the student completing the requirements for a regular high school diploma.