

Before



After
(Removal of
original Whalers
of New Bedford
Antiques &
Fine Arts
wording and
addition of
24"wd x 24" ht
sign)



William St.

Before

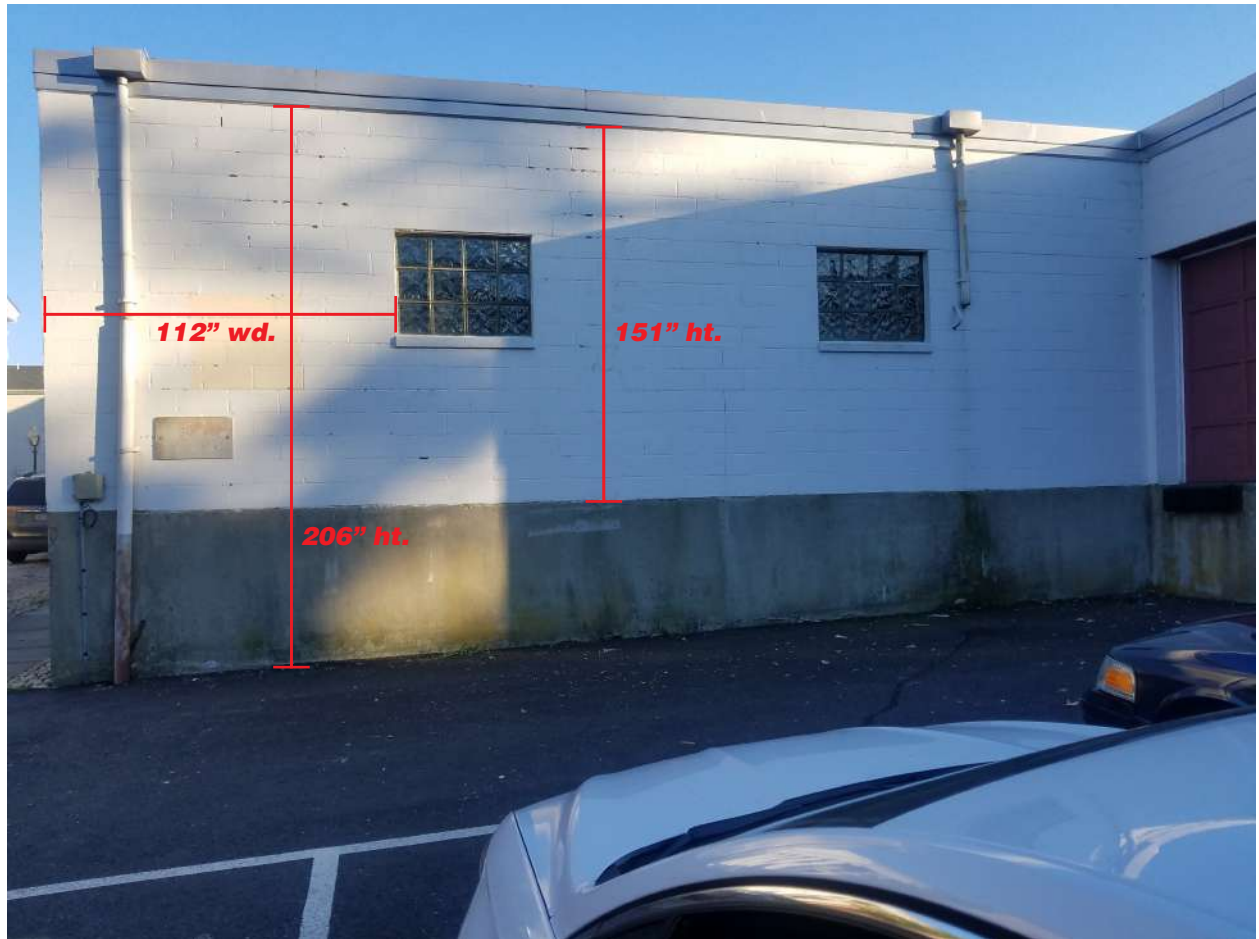


After
(addition of
24"wd x 24" ht
sign)

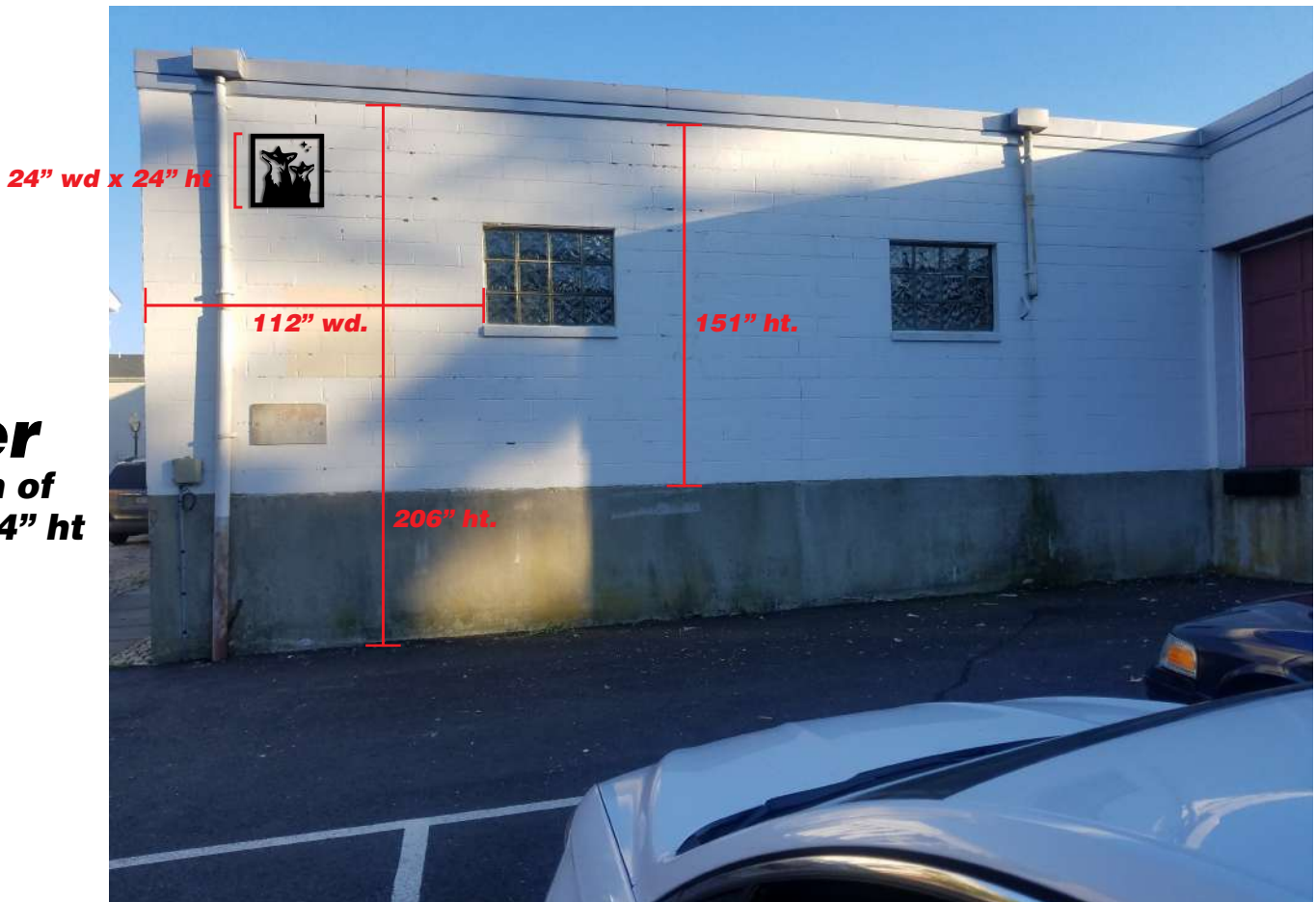


N Water St. Parking Lot

Before



After
(addition of
24"wd x 24" ht
sign)



William St. - Bethel St. Parking lot

Before



After
(Removal of
original Whalers
of New Bedford
Antiques &
Fine Arts
wording and
addition of
24"wd x 24" ht
sign)



Before



After
(Covering
original circular
sign Whalers
of New Bedford
Antiques &
Fine Arts with
flat black vinyl
and off white
vinyl letters)

