



ADDENDUM NO. 2

TO: ALL CONTRACT DOCUMENT HOLDERS OF RECORD
ALL PROSPECTIVE BIDDERS

FROM: CDM SMITH INC.
260 WEST EXCHANGE STREET, SUITE 300
PROVIDENCE, RHODE ISLAND 02903
PHONE: (401) 751-5360

DATE ISSUED: MAY 24, 2018

RE: NEW BEDFORD, MASSACHUSETTS
HIGH HILL RESERVOIR REHABILITATION
DWSRF-4214
BID NO. 18450518

**BID OPENING
DATE:** JUNE 6, 2018 AT 3:00 PM

**BID OPENING
LOCATION:** PURCHASING DEPARTMENT
CITY HALL, ROOM 208
133 WILLIAM STREET
NEW BEDFORD, MASSACHUSETTS 02740

**LAST WRITTEN
QUESTIONS DUE:** MAY 27, 2018

This Addendum No. 2, including all referenced attachments, modifies, amends, and supplements designated parts of the Contract Documents to the above-referenced project and shall be part of the Contract Documents as provided in the "Instructions To Bidders" for the above-referenced project.

Acknowledge receipt of this Addendum by inserting its number and date on page 00300-1 of the Bid Form. Failure to do so may subject the Bidder to disqualification.

The Contract Documents are hereby modified, amended and supplemented as follows:

NEW BEDFORD, MASSACHUSETTS
HIGH HILL RESERVOIR REHABILITATION
DWSRF-4214
BID NO. 18450518
ADDENDUM NO. 2
MAY 24, 2018
Page 2 of 2

ATTACHMENTS

The following attachments are included with this addendum:

1. Drawing S-5 – Outlet Structure Demolition Floor Plans and Sections
2. Drawing S-6 – Outlet Structure New Floor Plans and Details
3. Drawing S-7 – Outlet Structure New Floor Details

WRITTEN QUESTIONS SUBMITTED

1. **QUESTION/COMMENT:** Item 11 on the bid form has a quantity of 4,000 cubic yards but requests a lump sum for a total. Will it be unit priced?

RESPONSE: Yes, it will be measured and paid by cubic yards. The Bid Form and Section 01025 will be revised and reissued by addenda.

2. **QUESTION/COMMENT:** Item 11 in the measurement and payment section does not describe how the sediment is to be measured. Please add the measurement method.

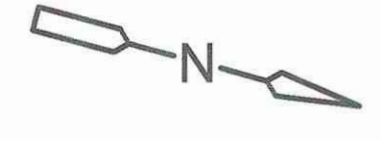
RESPONSE: The Bid Form and Section 01025 will be revised and reissued by addenda.

3. **QUESTION/COMMENT:** Is there an engineer's estimate for this project?

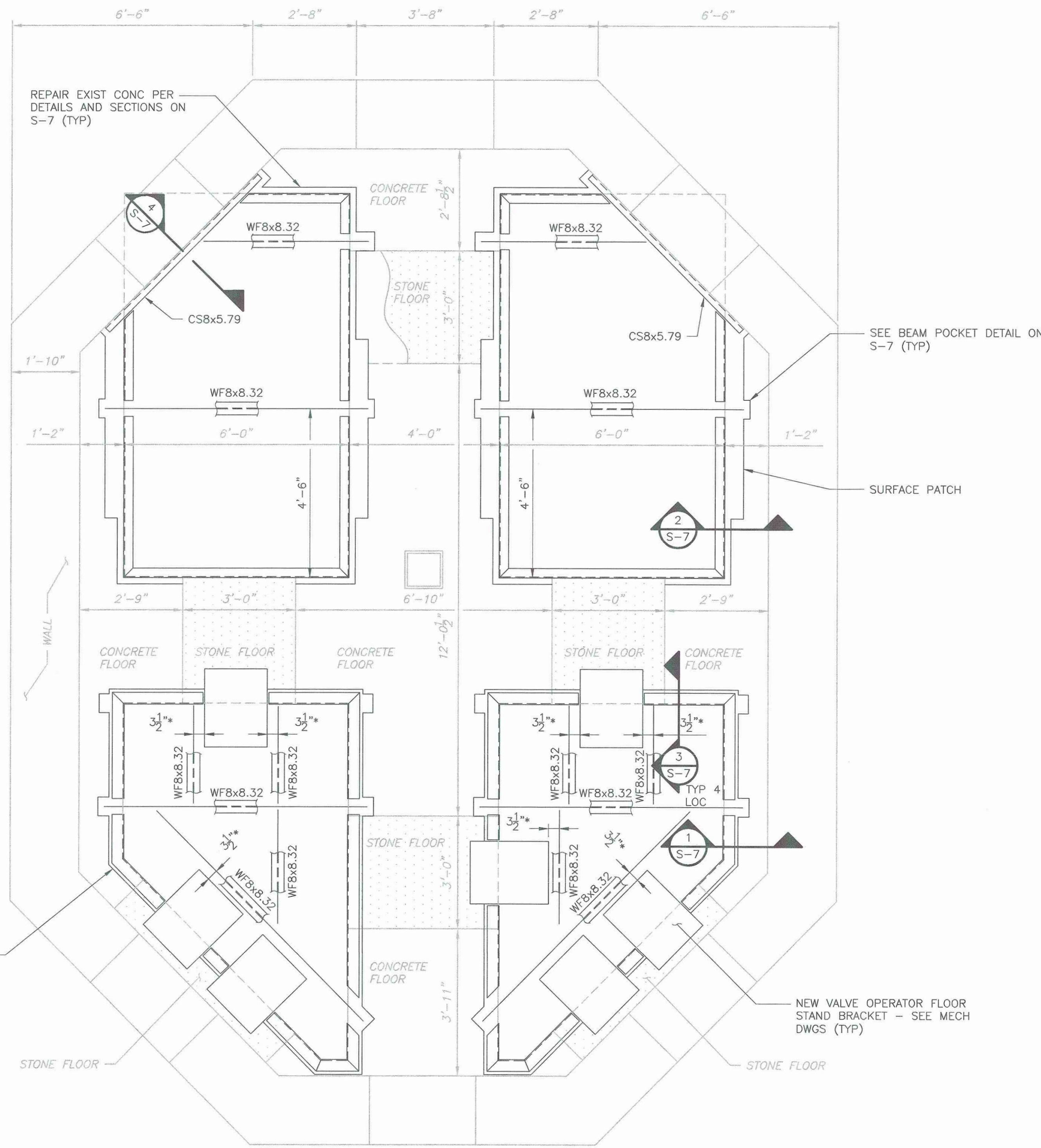
RESPONSE: The engineer's estimate will be issued by addenda.

-END OF ADDENDUM NO. 2-

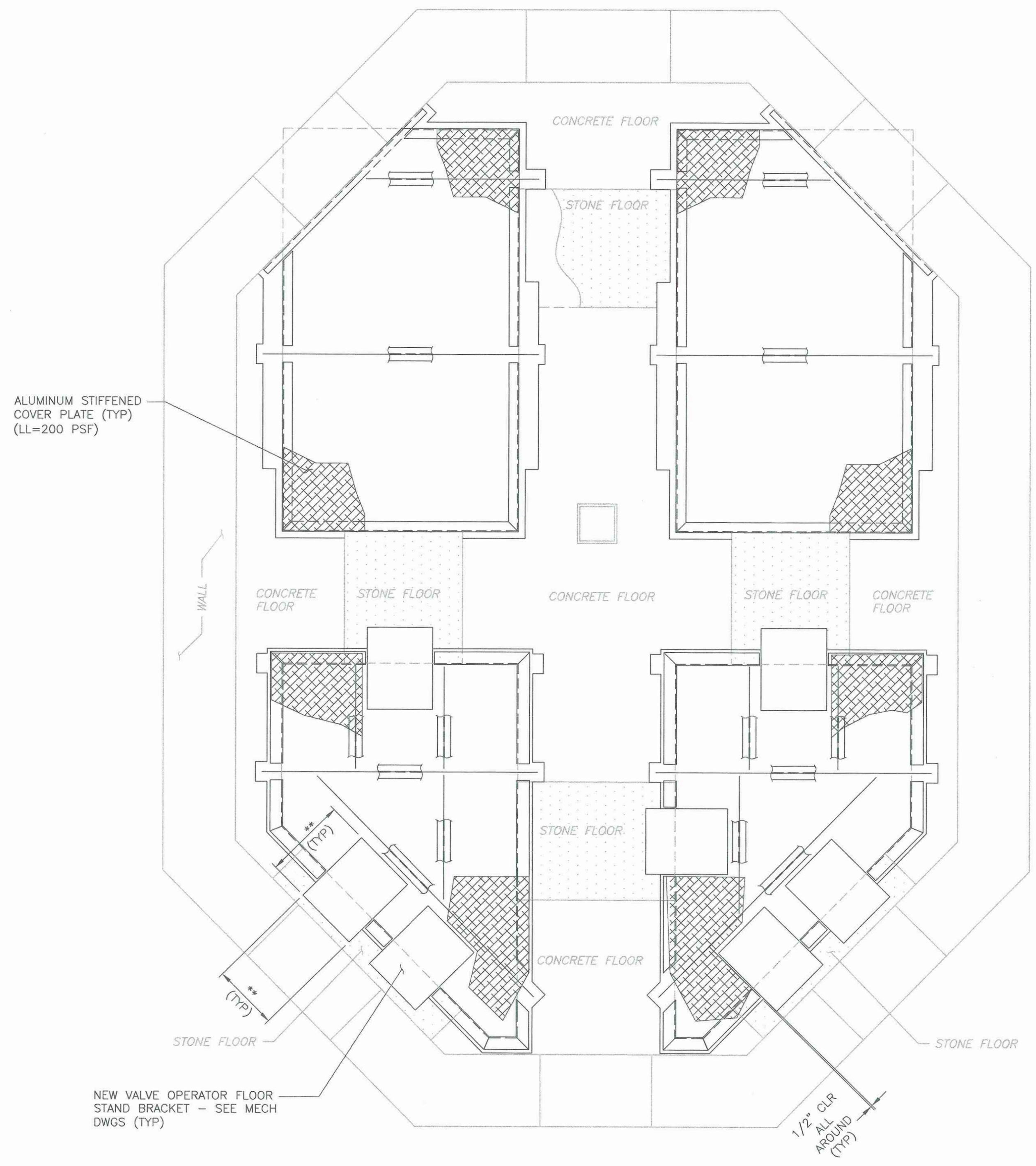
XPREFS: [COMS_2436, MW002(S)] Images: []
Last saved by: PAULBG Time: 5/23/2018 5:35:57 PM
pw:\low\cdsmith.com\pw_xm1\0308\101381\04 Design Services NM_100%\04 Structure\10 CADD\S006ONPL.dwg
© 2018 CDM SMITH ALL RIGHTS RESERVED.
REUSE OF DOCUMENTS: THESE DOCUMENTS AND DESIGNS PROVIDED BY PROFESSIONAL SERVICE, INCORPORATED HEREIN, ARE THE PROPERTY OF CDM SMITH AND ARE NOT TO BE USED, IN WHOLE OR PART, FOR ANY OTHER PROJECT WITHOUT THE WRITTEN AUTHORIZATION OF CDM SMITH.



- NOTE:
- * BEAM LOCATIONS TO BE ADJUSTED BASED ON VALVE OPERATOR STAND BRACKET DIMENSIONS.
 - ** CONTRACTOR TO COORDINATE DIMENSIONS OF STAND BRACKET WITH GATE MANUFACTURER.



FLOOR FRAMING
PLAN
1/2" = 1'-0"



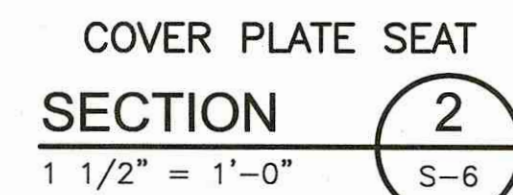
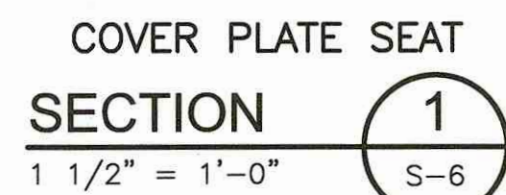
FLOOR PLATE LAYOUT
PLAN
1/2" = 1'-0"

REV. NO.	DATE	DRWN	CHKD	REMARKS

DESIGNED BY: B. PAUL/E. GOPINATH	CDM Smith 260 West Exchange Street, Suite 300 Providence, RI 02903 Tel: (401) 751-5360
DRAWN BY: R. GAVAS	
SHEET CHK'D BY: B. PAUL	
CROSS CHK'D BY: M. GALLANT	
APPROVED BY: D. L. HARRIS	
DATE: MAY 2018	

CITY OF NEW BEDFORD, MASSACHUSETTS WATER SYSTEM IMPROVEMENTS HIGH HILL RESERVOIR REHABILITATION	HIGH HILL RESERVOIR OUTLET STRUCTURE NEW FLOOR PLANS AND DETAILS	PROJECT NO. 0309-101381 FILE NAME: S006ONPL.DWG SHEET NO. S-6
---	---	---





- GENERAL NOTES
1. SLANTED AND SCREENED TEXT ON S-5, S-6, AND S-7 INDICATES INFORMATION OR DIMENSIONS TAKEN FROM DRAWINGS PRODUCED BY HAYDEN, HARDING & BUCHANAN INC CONSULTING ENGINEERS, TITLED "HIGH HILL RESERVOIR OUTLET CHAMBER", DATED JUNE 1959 AND DRAWINGS PRODUCED BY CIVIL AND HYDRAULIC ENGINEERS TITLED "DISTRIBUTING RESERVOIR" DATED NOVEMBER 1898. ALL EXISTING INFORMATION AND DIMENSIONS SHALL BE VERIFIED AND/OR FIELD MEASURED BY THE CONTRACTOR PRIOR TO FABRICATION AND CONSTRUCTION.
 2. AFTER FLOOR DEMO IS COMPLETED THE CONTRACTOR SHALL FIELD MEASURE EXISTING FLOOR OPENINGS AND PROVIDE FLOOR PLAN SHOWING ALL DIMENSIONS.
 3. ** CONTRACTOR TO COORDINATE DIMENSION OF OPENING OF NUT OPERATOR WITH MANUFACTURER.



NT



NTS



NTS



NT:



DESIGNED BY:	B. PAUL/E. GOPINATH
DRAWN BY:	R. GAVAS
SHEET CHK'D BY:	B. PAUL
CROSS CHK'D BY:	M. GALLANT
APPROVED BY:	D. L. HARRIS
DATE:	MAY 2018

260 West Exchange Street, Suite 300
Providence, RI 02903
Tel: (401) 751-5360

HIGH HILL RESERVOIR REHABILITATION

NEW FLOOR DETAILS

S-7