

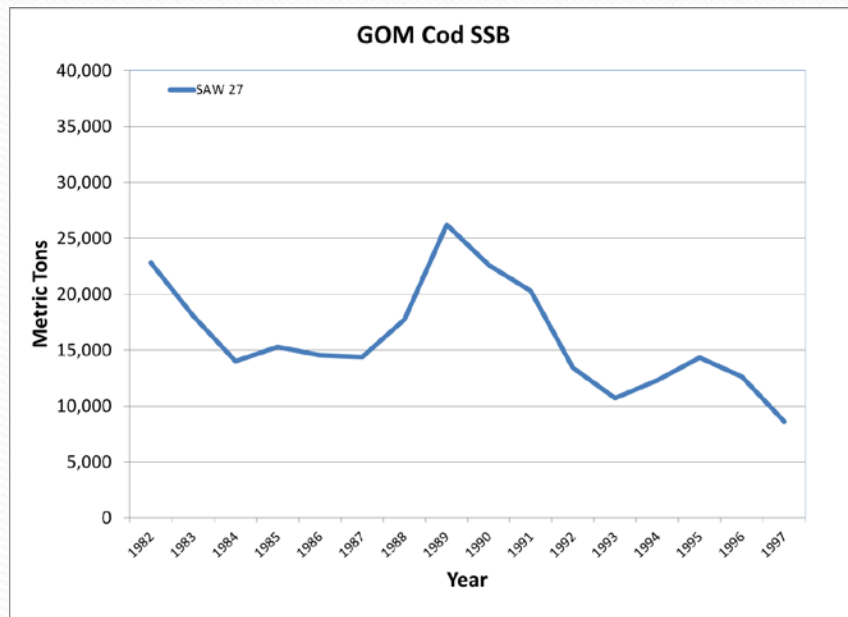


# GOM Cod Management 1994-2015

Tom Nies  
New England Fishery Management Council  
Maine Fishermen's Forum, 2015



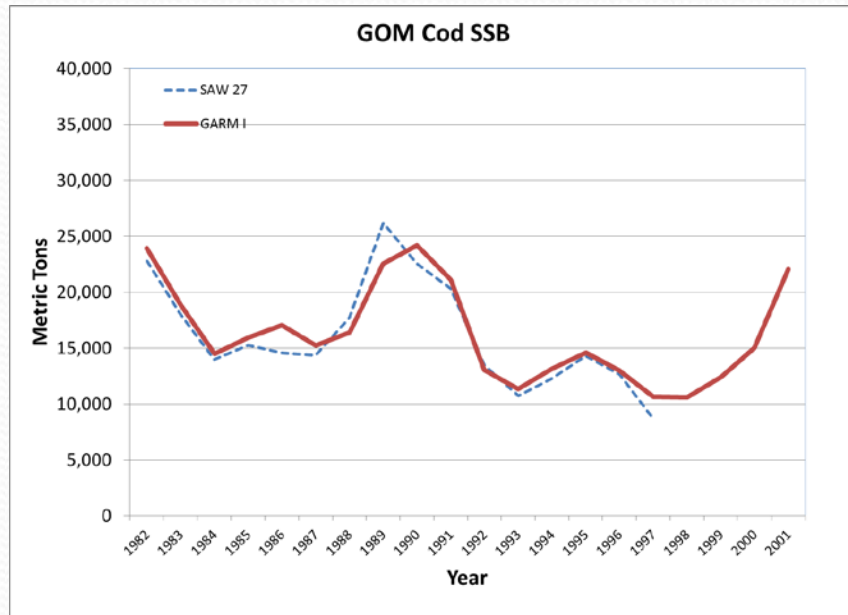
# Early Years



- Amendment 5 (1994)
- Amendment 7 (1996)
- Framework 20 (1997)
- Framework 24 (1998)
- Framework 25 (1998)
- Framework 26 (1999)
- Framework 27 (1999)
- Framework 31 (2000)
- Framework 33 (2000)



# Early Results



“The meeting was the most optimistic assessment meeting that I have attended. For the majority of stocks, fishing mortality has gradually been reduced and in response spawning stock biomass (SSB) is rebuilding.”





**UNITED STATES DEPARTMENT OF COMMERCE**  
**National Oceanic and Atmospheric Administration**  
NATIONAL MARINE FISHERIES SERVICE  
NORTHEAST REGION  
One Blackburn Drive  
Gloucester, MA 01930

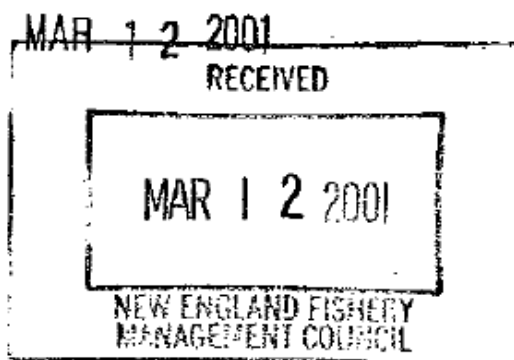
Paul J. Howard, Executive Director  
New England Fishery Management Council  
50 Water Street  
Newburyport, MA 01950

Dear Paul,

This letter is to make you aware of two errors in the recently released "Report to Congress, Status of the Fisheries of the United States", January 2001 (RTC) that are relevant to fisheries managed by the New England Council.

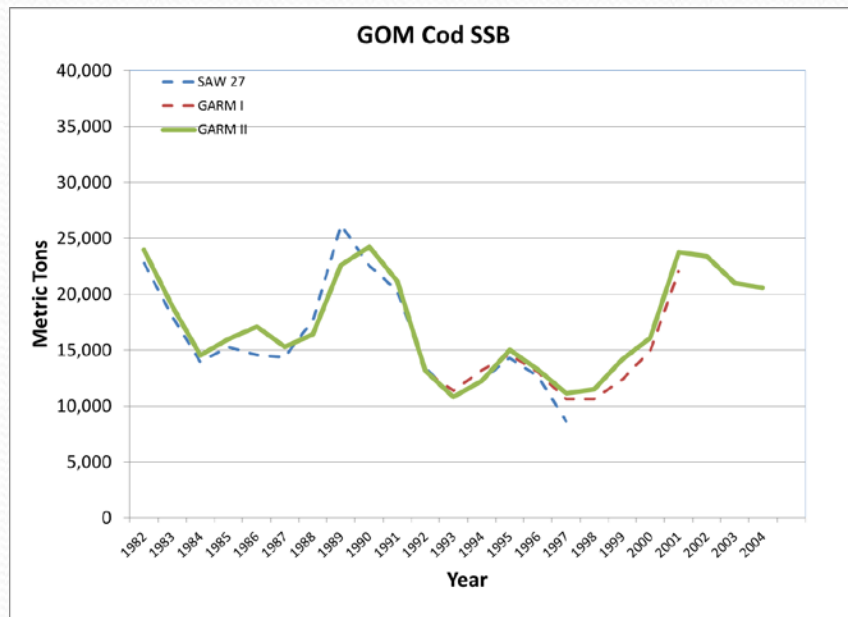
1) Gulf of Maine Cod; Fishing Mortality Rate Status.

The correct fishing mortality rate status determination for this stock should be "no" (overfishing is not occurring). The status determination was made by comparing the current fishing mortality rate of the stock (as reported by the September 2000 "Assessment of 19 Northeast Groundfish Stocks Through 2000") to the...





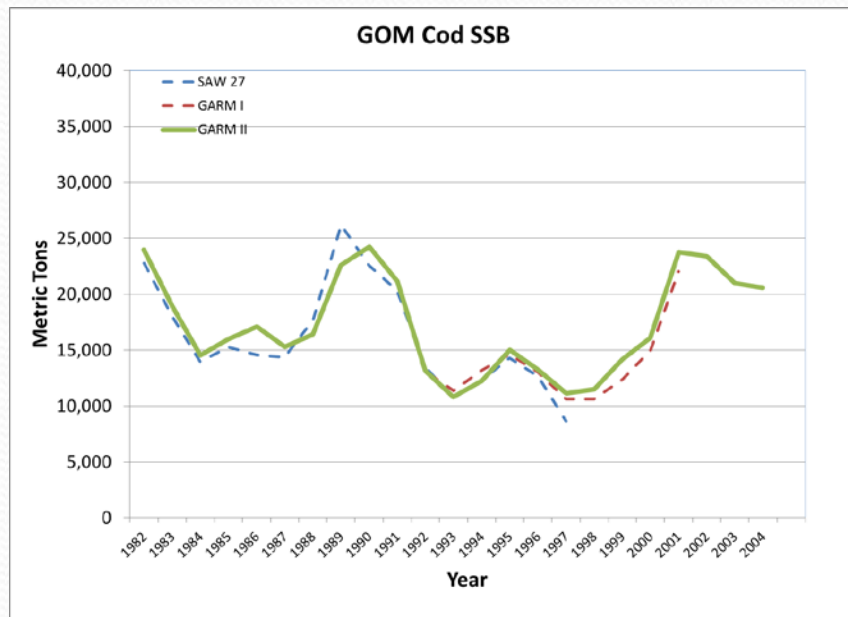
# Amendment 13



- New reference points
- Formal rebuilding plans
- DAS changes:
  - Individual allocations for all vessels
  - DAS categories
  - ~300 vessels lost all DAS
  - Planned reductions
- Habitat measures



# Framework 42

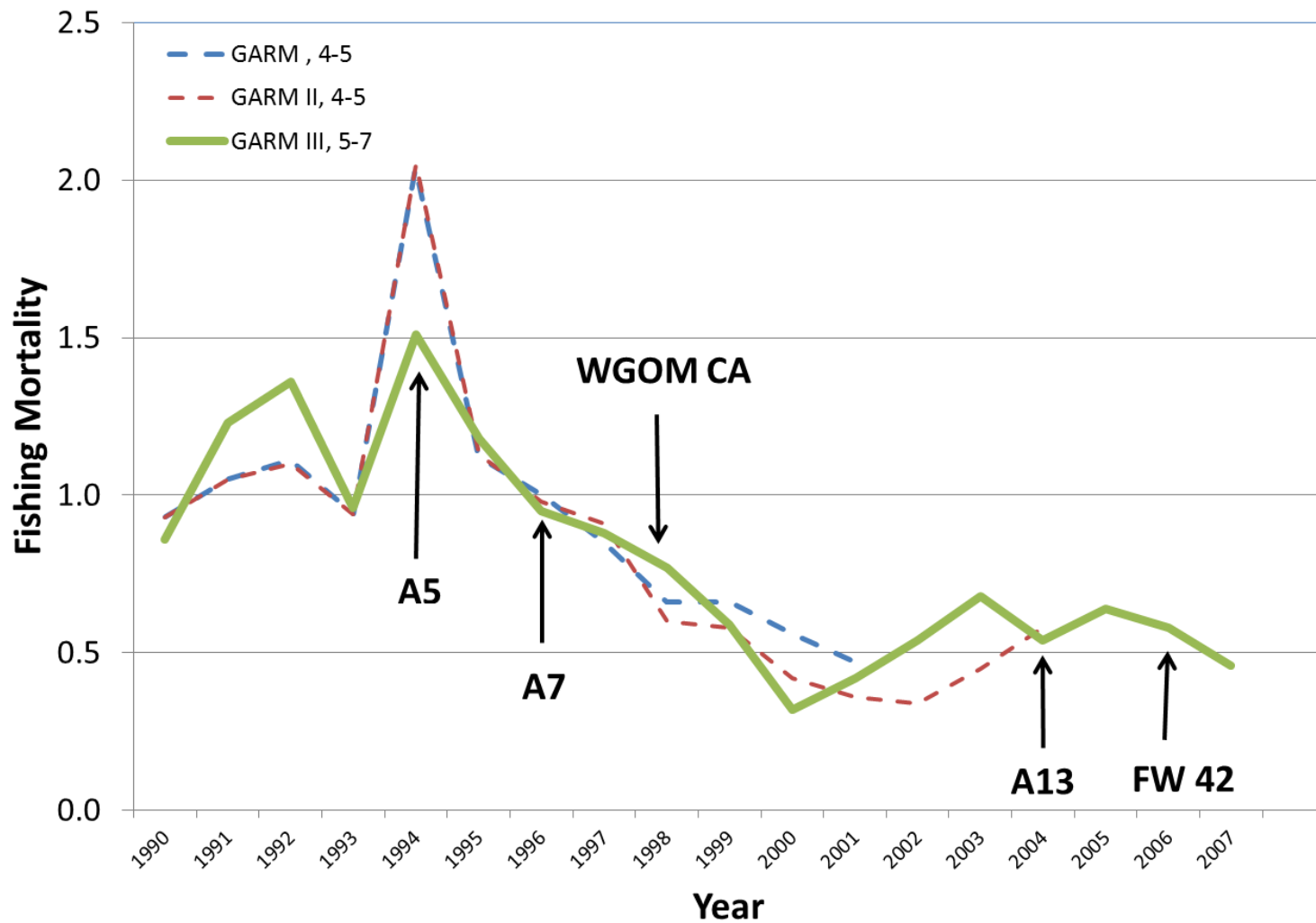


- New rebuilding target
- Additional DAS reductions
- Differential DAS in the inshore Gulf of Maine and SNE



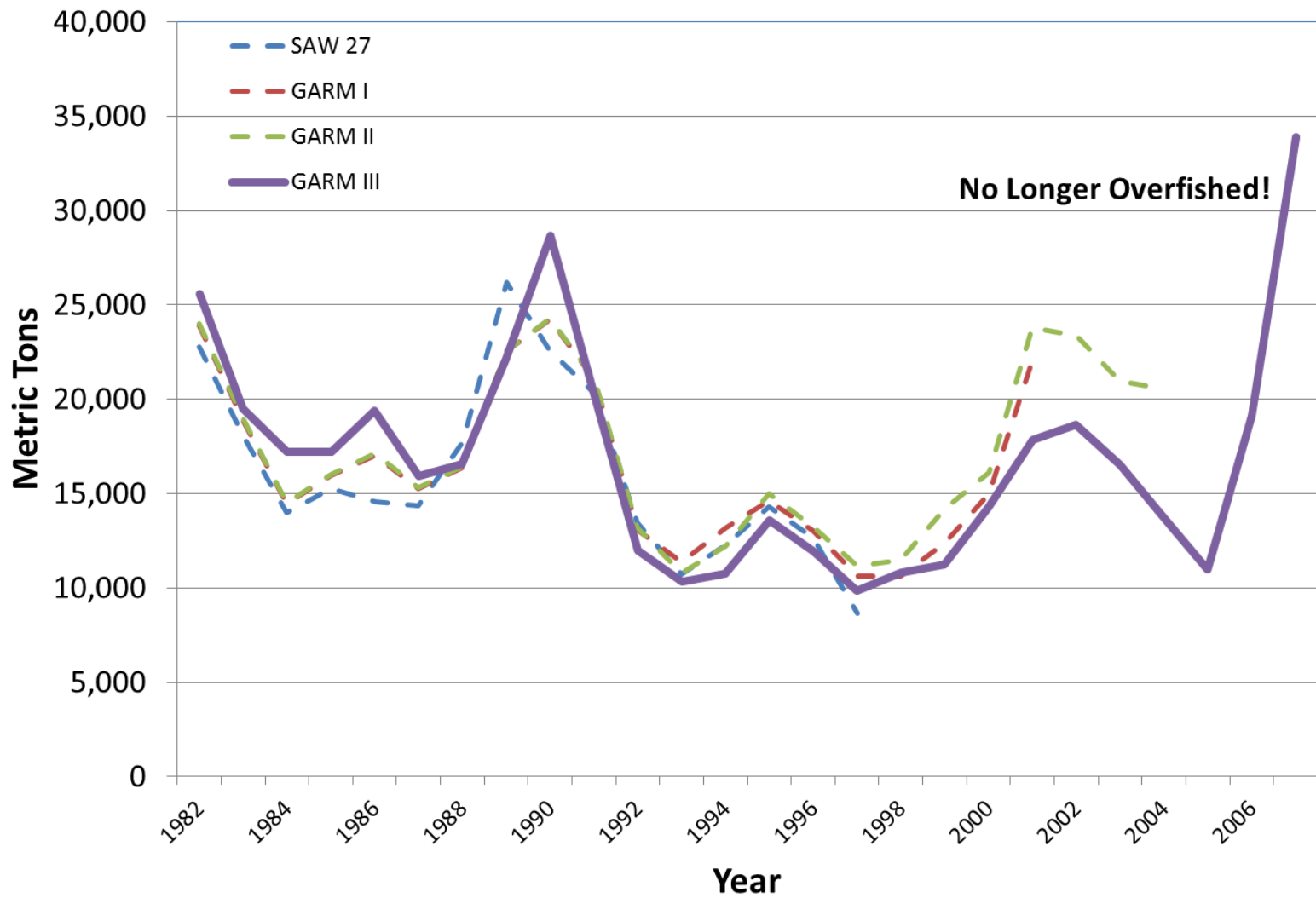


# GOM Cod Mortality





# GOM Cod SSB







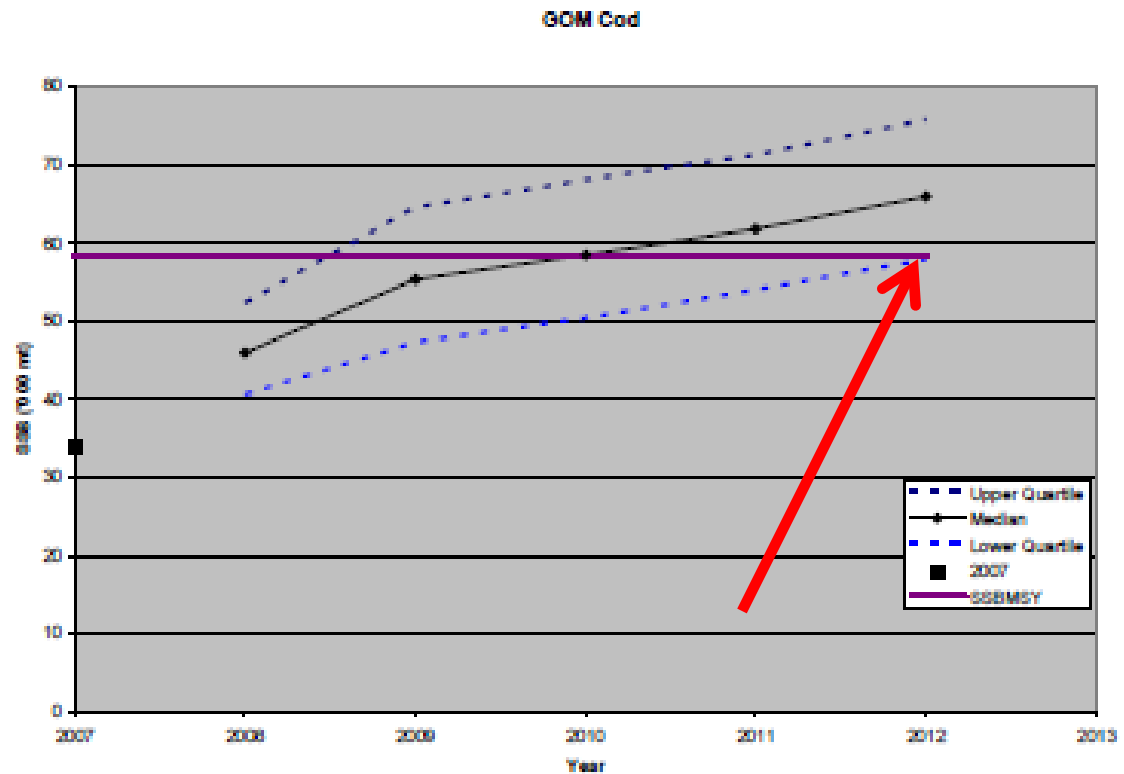
# GARM III

- “The 2008 NLLS stock size estimates were relatively precise for ages less than 8...”
- “The ... 2005 year class .. is supported by an additional year of data in the present assessment.”
- “The Panel concluded that the retrospective pattern in this assessment was small and did not require an adjustment.”
- “Comparing the two formulations, the Panel noted that the VPA may be underestimating current stock status.”
- “It should be recognized that these projections depend in large part on the estimated strength of the 2005 year class.”



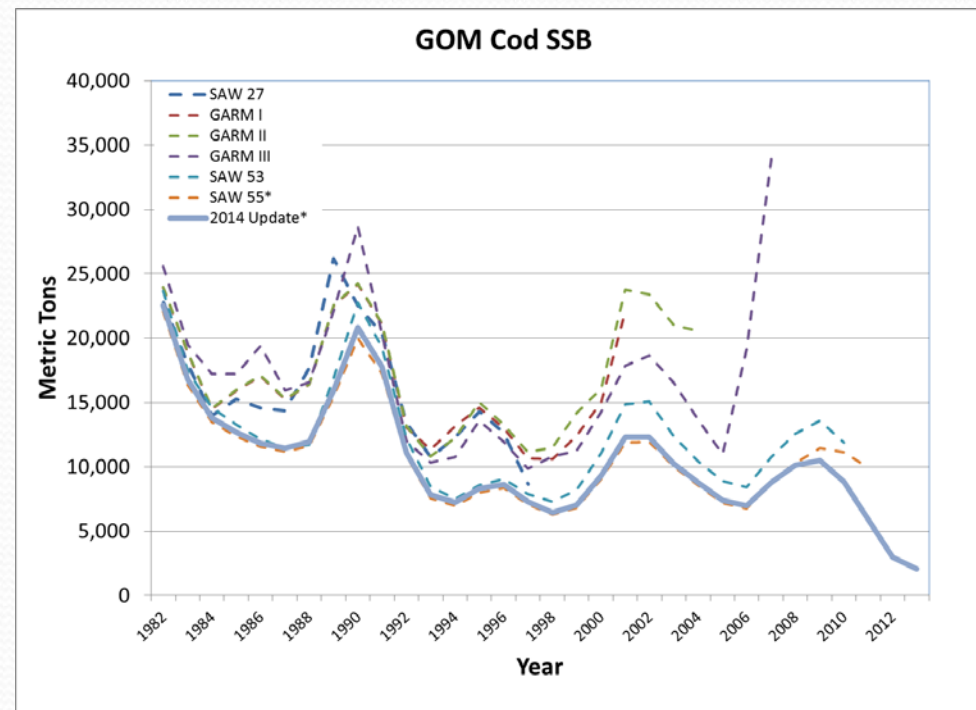
# Amendment 16/FW 44

- Expanded sector program
- Annual Catch Limits for GOM cod
  - Frebuild:  
~12,600 mt
  - FMSY:  
11,089 mt
  - 75 pct of FMSY  
8,530 mt



# The Rest of the Story

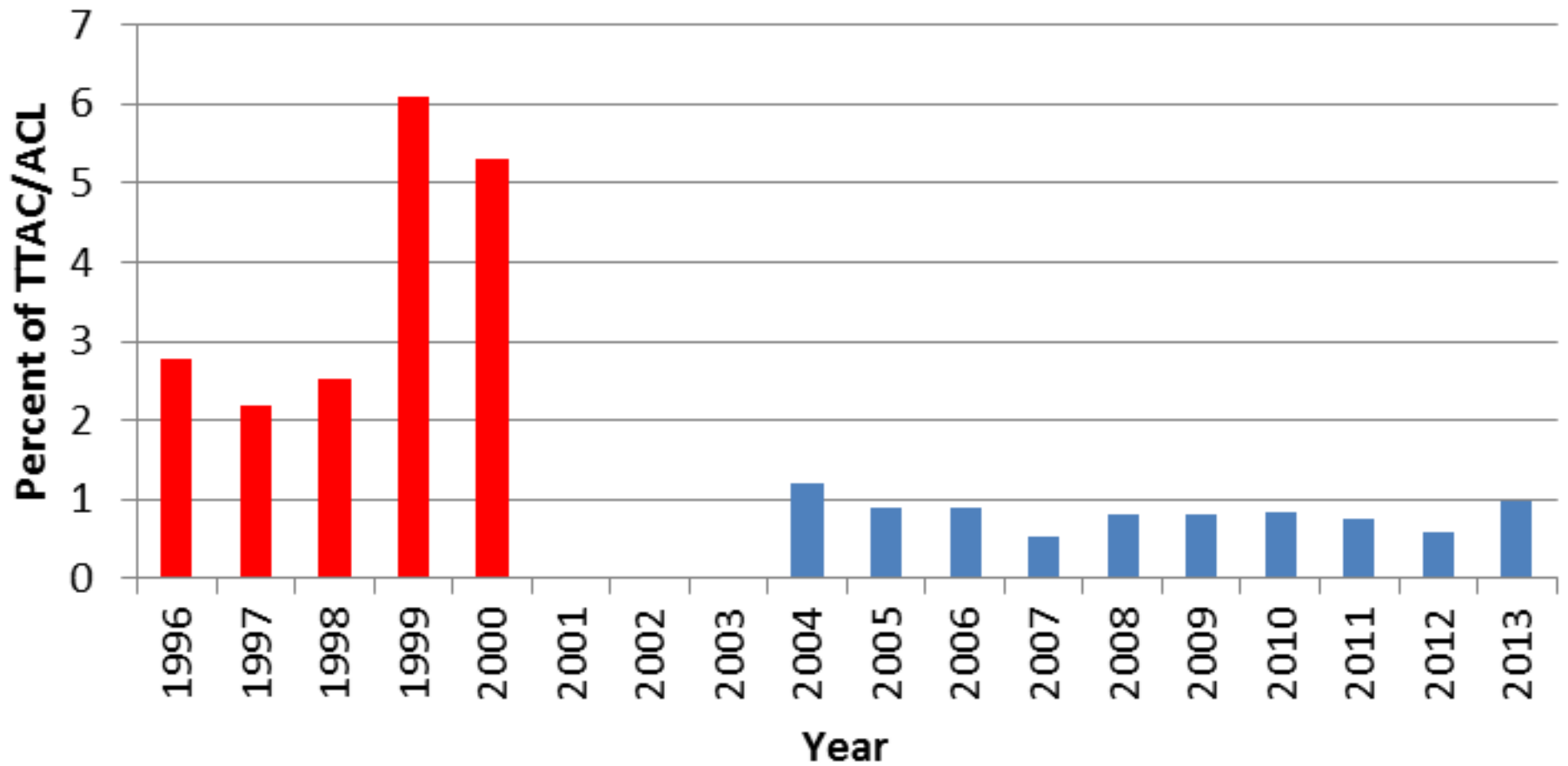
- FY 2012 ACL reduced to 6,700 mt by NMFS
- FY 2013/2014 ABC reduced to 1,550 mt
- FY 2015 ABC proposed as 386 mt
- FW 53 proposes revised closures in inshore GOM







# GOM Cod

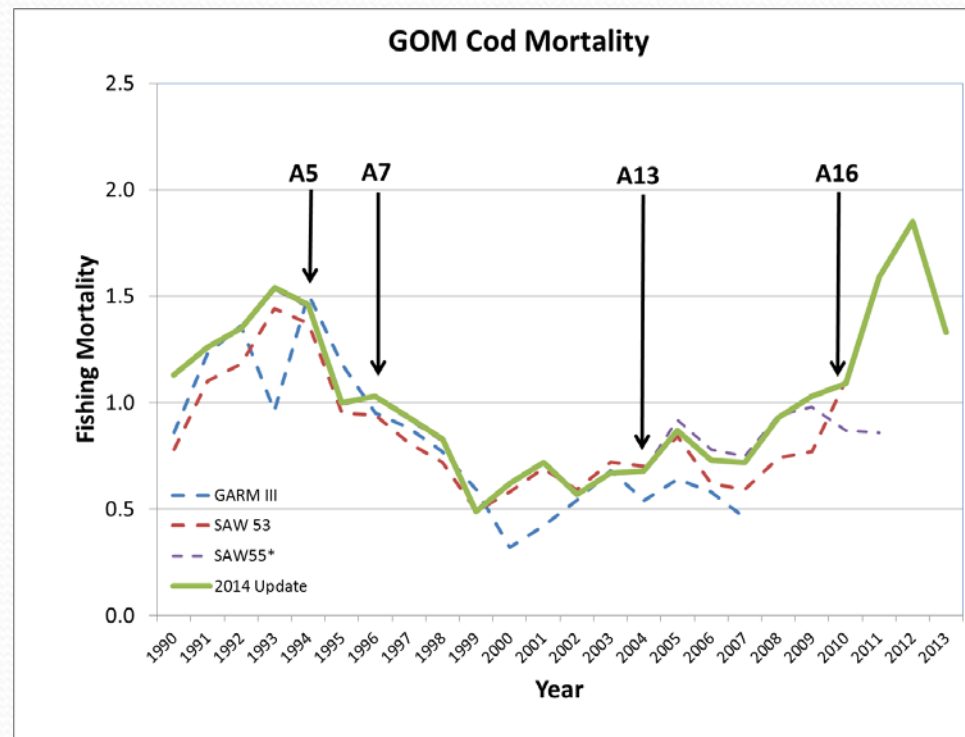


← ACL →



# Going Forward

- Better accounting for uncertainties
- Catch advice project
- Influence of environment on stock productivity
- Resolve stock structure questions





Questions?

