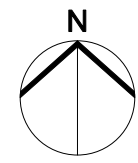
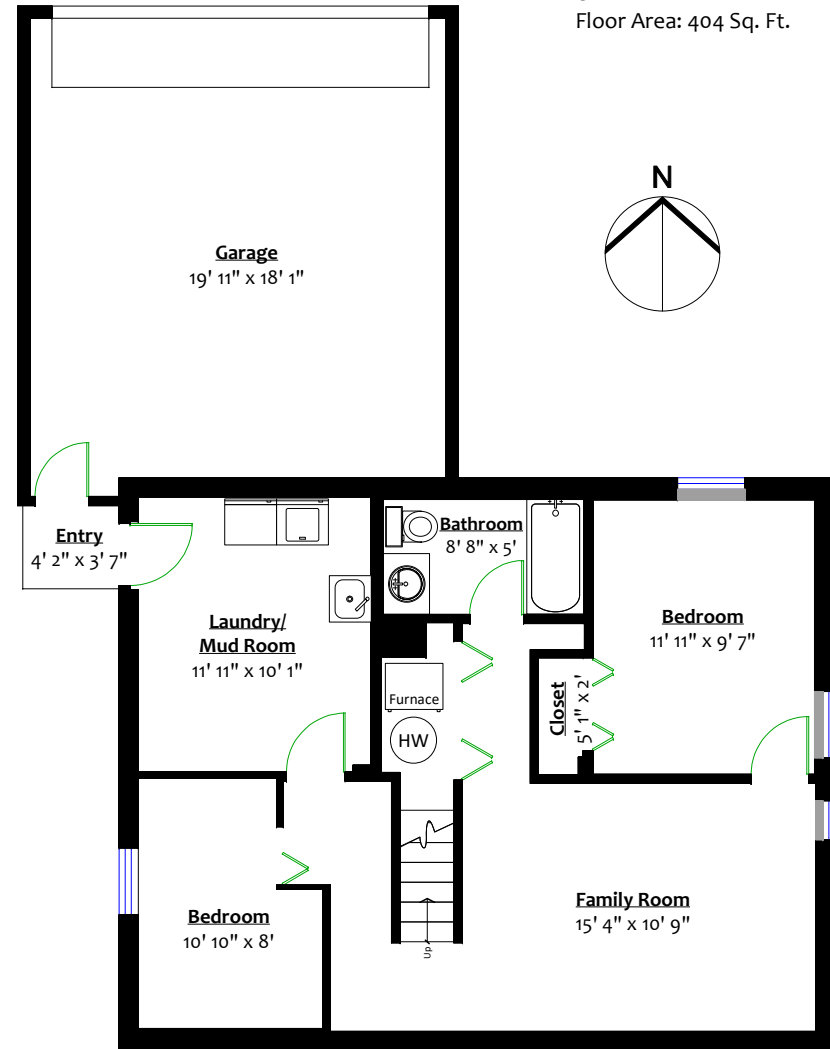
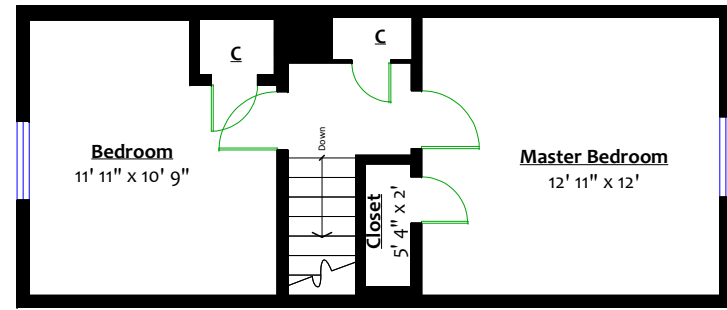
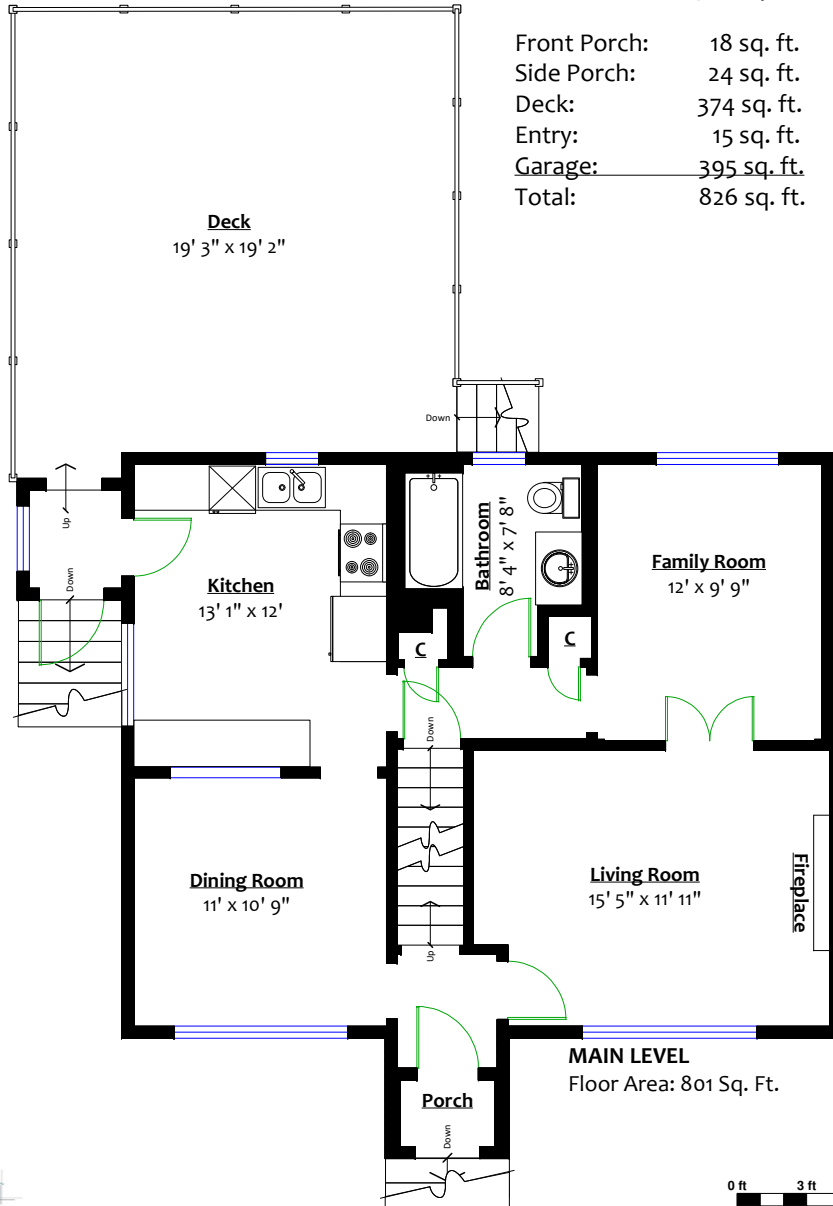


**211 Osborne Avenue,  
 New Westminster, B.C.**

**Totals\*\***  
 Main Level: 801 sq. ft.  
 Upper Level: 404 sq. ft.  
 Lower Level: 769 sq. ft.  
 Total: 1,974 sq. ft.

Front Porch: 18 sq. ft.  
 Side Porch: 24 sq. ft.  
 Deck: 374 sq. ft.  
 Entry: 15 sq. ft.  
 Garage: 395 sq. ft.  
 Total: 826 sq. ft.



\*\* Approx. based on interior measurements to exterior walls  
 \*\* Total square footage not taken from original blueprints  
 \*\* Includes under-height areas