



# HAFEZ PANJU

PERSONAL REAL ESTATE CORPORATION

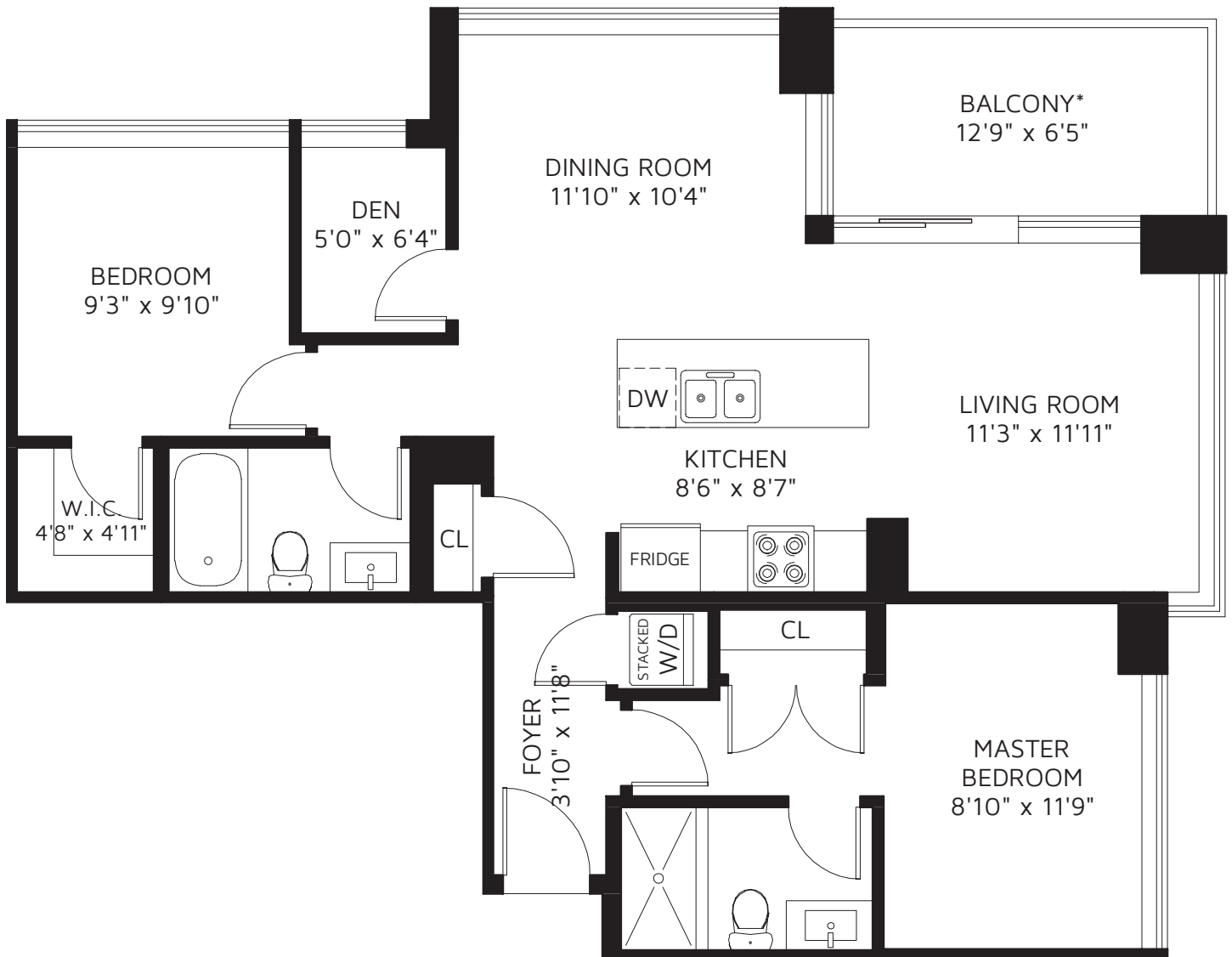
TRUST THE VALUE



604-377-3689 | hafez@hafezrealty.com | hafezrealty.com

## ALTITUDE

506 - 9060 UNIVERSITY CRES, BURNABY, V5A 0E1



TOTAL FINISHED AREA 964 SQ FT

BALCONY\* 87 SQ FT

\*NOT INCLUDED IN OVERALL SQUARE FOOTAGE



FLOOR PLAN IS PROVIDED BY REAL MEASUREMENTS AND RENDERINGS. FOR PROMOTIONAL USE ONLY. NOT FOR ARCHITECTURAL OR CONSTRUCTION USE. AREA IS CALCULATED USING ANSI / BOMA STANDARD Z65.4 - 2010 METHOD 'A' FOR MULTI-UNIT RESIDENTIAL BUILDINGS. WHILE EVERY EFFORT IS MADE TO ENSURE THE ACCURACY, DIMENSIONS AND TOTAL AREA ARE NOT GUARANTEED. E&OE