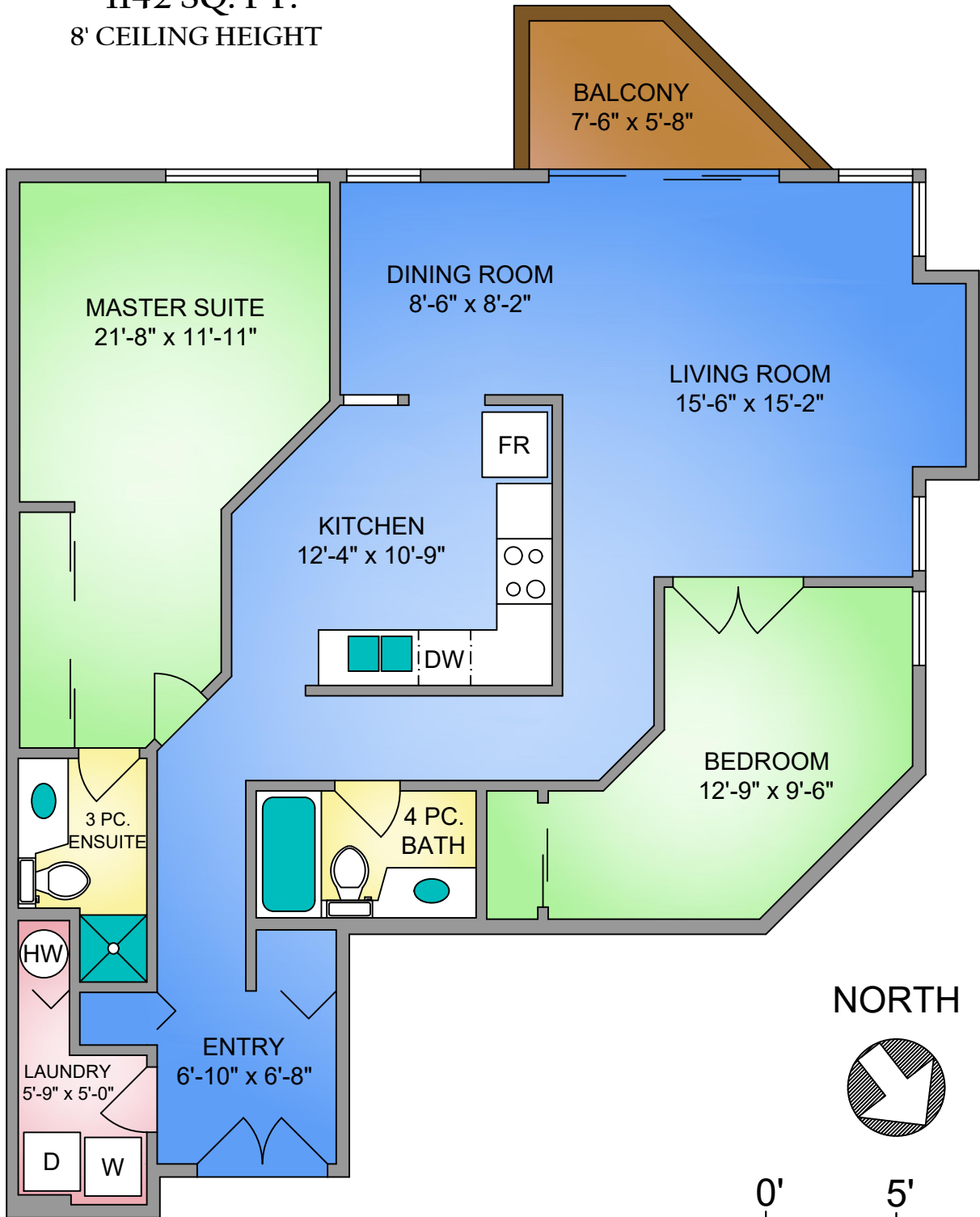


**UNIT 223 - 40 GORGE ROAD W.**

**1142 SQ. FT.**

**8' CEILING HEIGHT**



**NORTH**



**SCALE**

UNIT 223 - 40 GORGE ROAD W. NOVEMBER 24, 2018		
PREPARED FOR THE EXCLUSIVE USE OF DENNIS & ALLY GUEVIN PLANS MAY NOT BE 100% ACCURATE, IF CRITICAL BUYER TO VERIFY. SQ FT TAKEN FROM STRATA PLAN, NOT CALCULATED BY PROPER MEASURE LTD.		
FLOOR	AREA (SQ. FT.)	
	FINISHED	BALCONY
SECOND	1142	51



250-884-9753  
matt@propermeasure.com  
www.propermeasure.com

