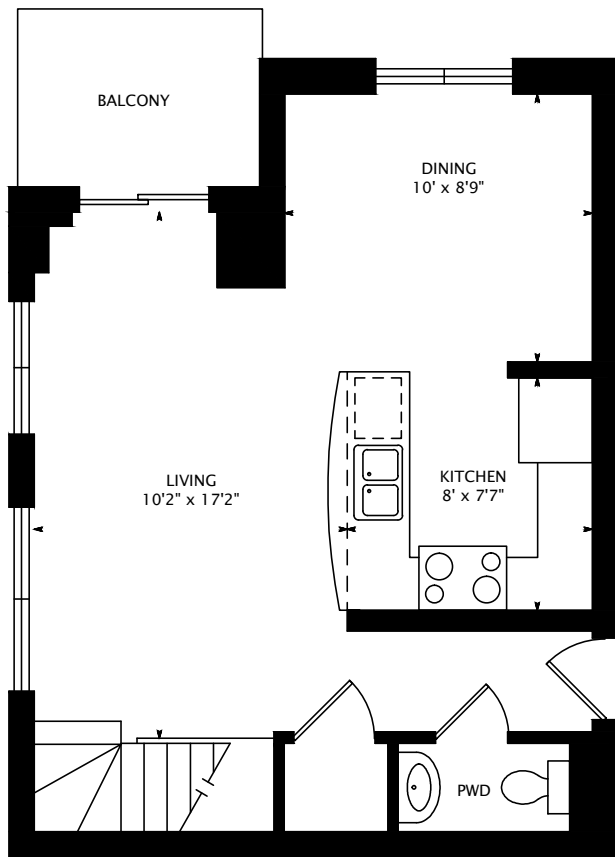
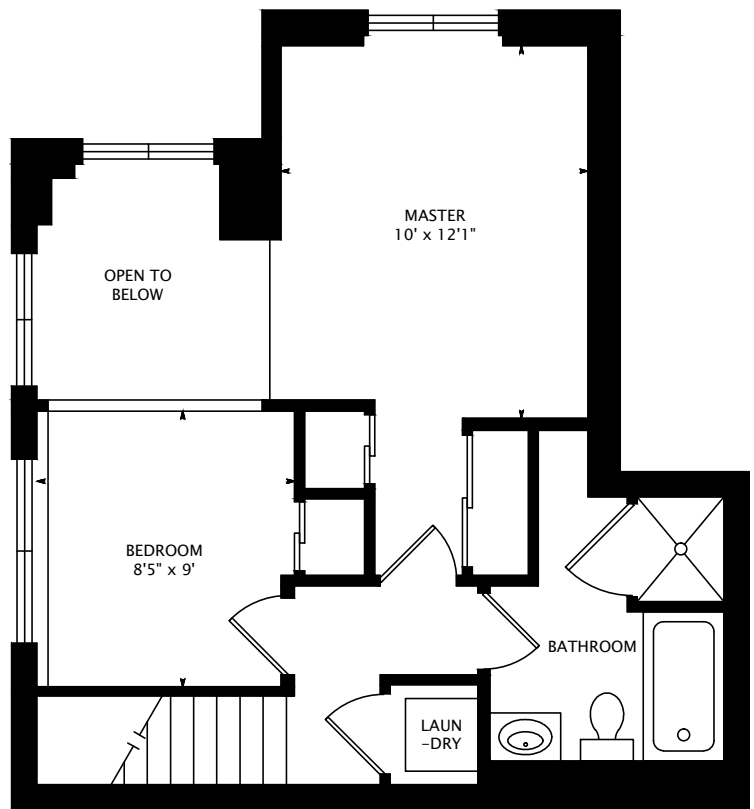


# 800 KING STREET WEST #413



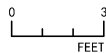
MAIN FLOOR  
433 SQUARE FEET



SECOND FLOOR  
435 SQUARE FEET

868 SQUARE FEET  
+ 46 SQUARE FEET BELOW GRADE

interactive tour: [toursler.com/800-king-413](http://toursler.com/800-king-413)



DATE: MAY 5, 2015

DIMENSIONS, AREAS, LAYOUTS AND DETAILS ARE APPROXIMATE AND SHOULD BE CONSIDERED ILLUSTRATIVE ONLY.

**CORINNE MCCABE, BROKER**  
BOSLEY REAL ESTATE LTD., BROKERAGE  
DIRECT: (416) 888-9842, OFFICE: (416) 322-8000  
EMAIL: [corinne.mccabe@me.com](mailto:corinne.mccabe@me.com), WEB: [corinnemccabe.com](http://corinnemccabe.com)