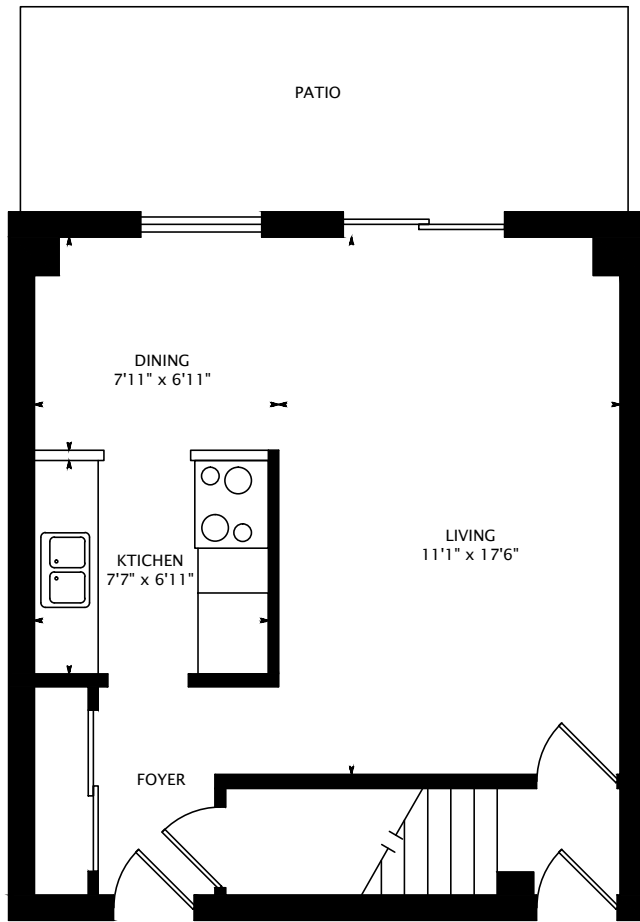
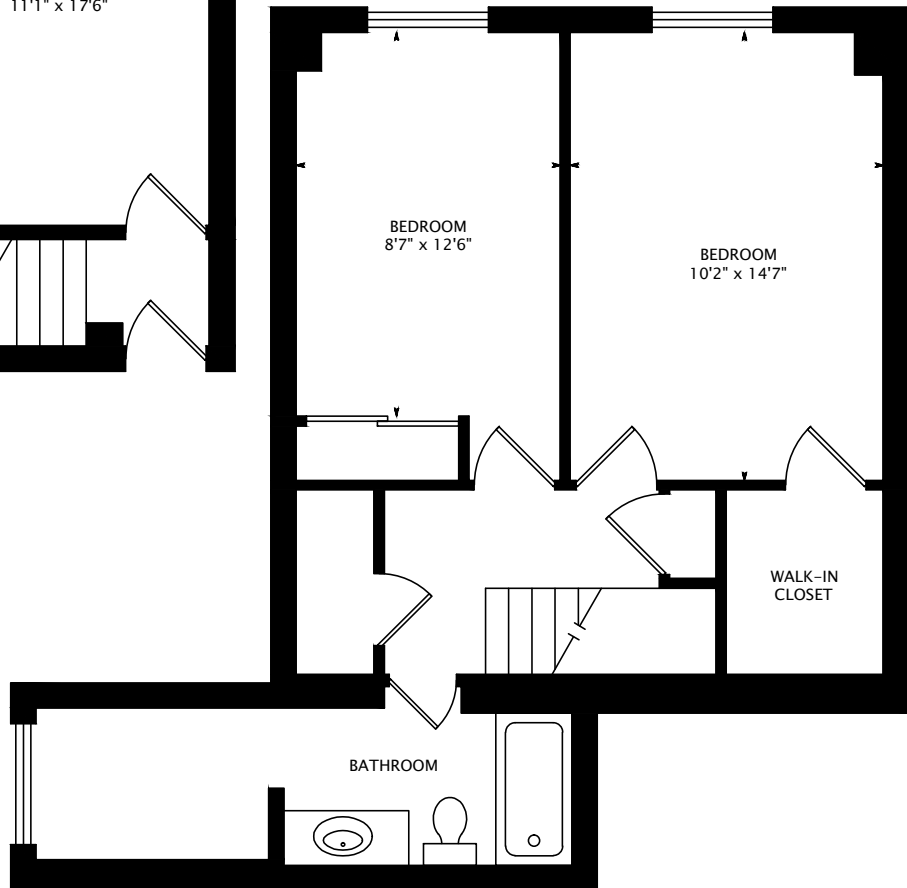


1071 WOODBINE AVENUE #107



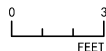
MAIN FLOOR
422 SQUARE FEET



SECOND FLOOR
559 SQUARE FEET

981 SQUARE FEET

interactive tour: toursler.com/1071-woodbine



DATE: DECEMBER 8, 2015

DIMENSIONS, AREAS, LAYOUTS AND DETAILS ARE APPROXIMATE AND SHOULD BE CONSIDERED ILLUSTRATIVE ONLY.

CORINNE MCCABE, BROKER
BOSLEY REAL ESTATE LTD., BROKERAGE
DIRECT: (416) 888-9842, OFFICE: (416) 322-8000
EMAIL: corinne.mccabe@me.com, WEB: corinnemccabe.com