



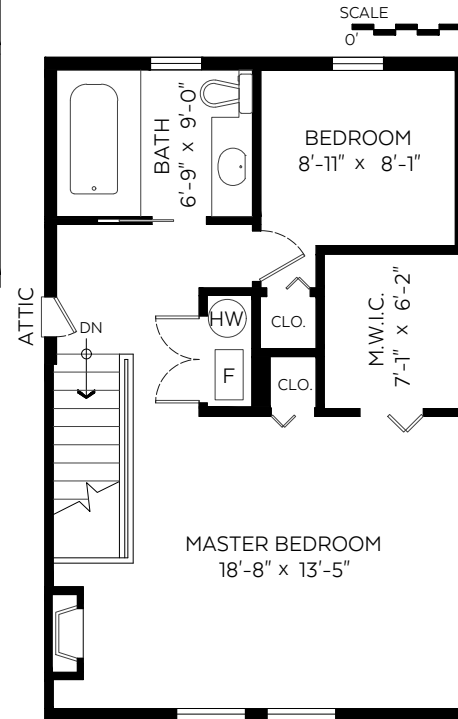
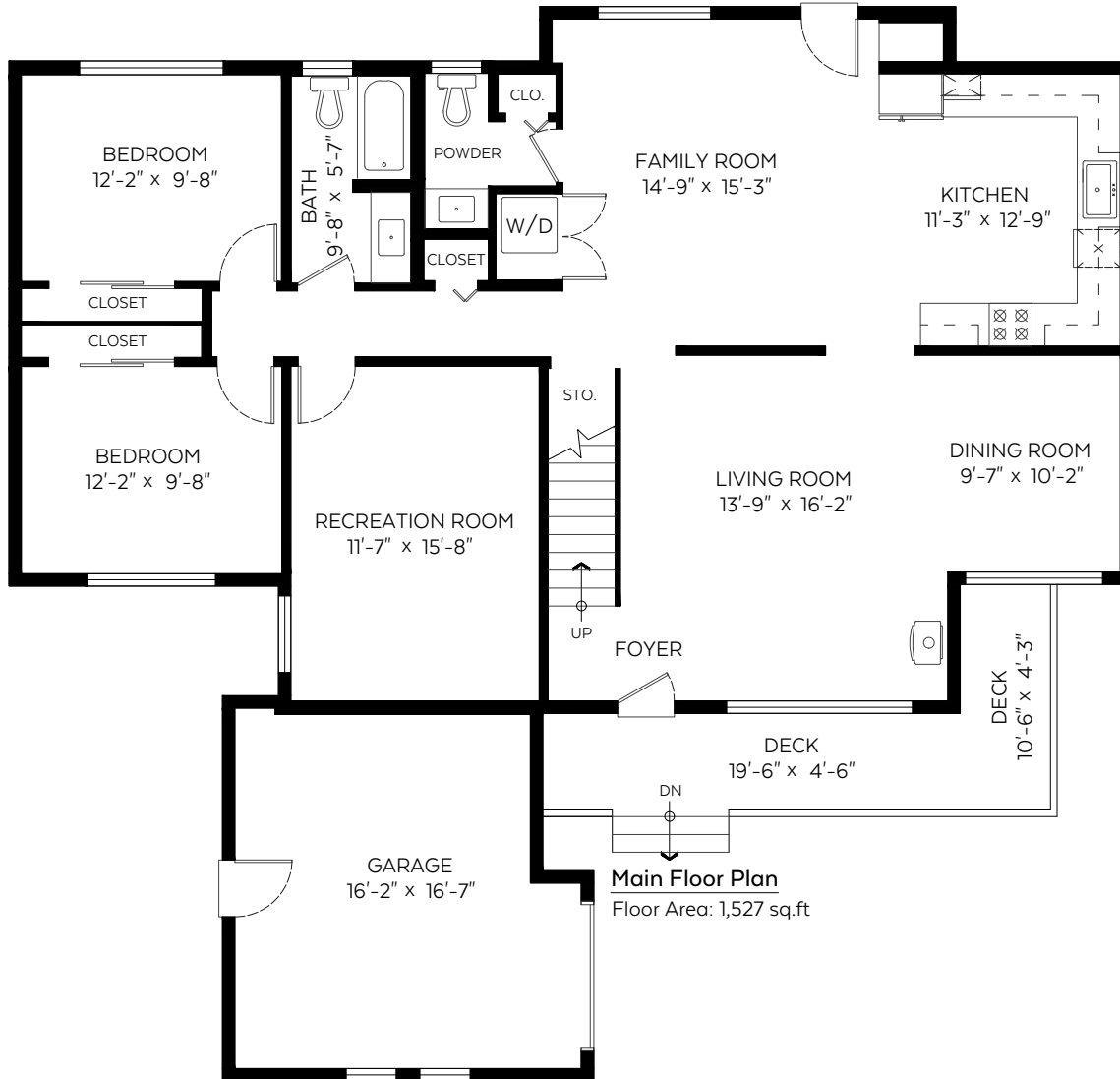
**BOTTO**  
REAL ESTATE

1359 Briarlynn Crescent,  
North Vancouver, B.C.

Main Floor:	1,527 sq.ft.
Upper Floor:	598 sq.ft.
<b>Total:</b>	<b>2,125 sq.ft.</b>

**Auxiliary Area**

Garage:	282 sq.ft.
Deck:	143 sq.ft.



Measured on: Nov. 23, 2017

The floor plan is not suitable for architectural/construction and is covered under E.O. © Excelsior Measuring Inc. 2017. All rights reserved for Excelsior Measuring Inc. Users shall not publish and distribute such material (in whole or in part) and/or incorporate it in other works in any form.



**NORTH**

