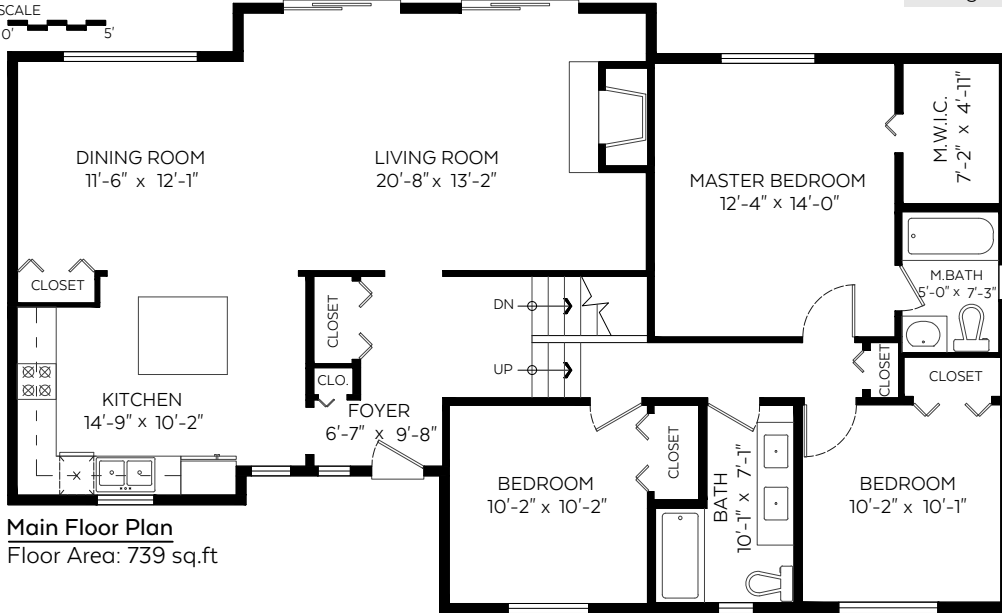


Main Floor:	749 sq.ft.
Upper Floor:	649 sq.ft.
Lower Floor:	337 sq.ft.
Basement Floor:	750 sq.ft.
Total:	2,485 sq.ft.

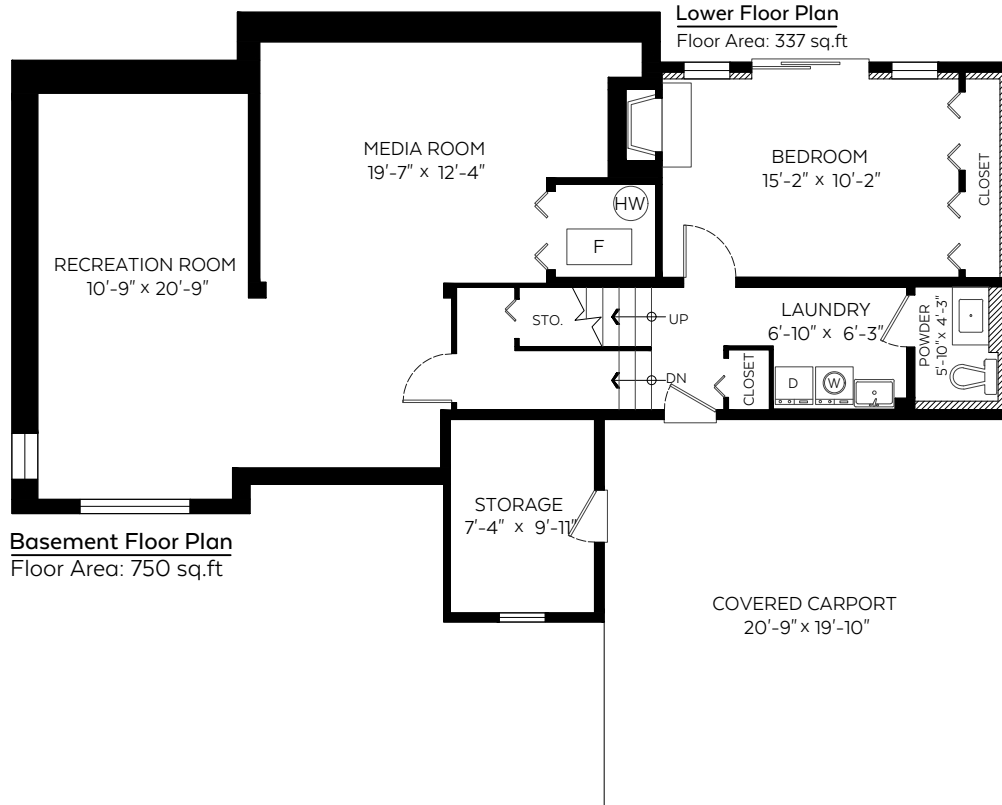
Auxiliary Area

Carport:	412 sq.ft.
Storage:	84 sq.ft.

SCALE
0" 5"



Upper Floor Plan
Floor Area: 649 sq.ft.



Basement Floor Plan
Floor Area: 750 sq.ft.

Measured on: May 4, 2018

The floor plan is not suitable for architectural/construction and is covered under E&O. © Excelsior Measuring Inc. 2018. All rights reserved for Excelsior Measuring Inc. Users shall not publish and distribute such material (in whole or in part) and/or incorporate it in other works in any form.



NORTH

