

UNIT 101-1736 WEST 10th AVENUE
VANCOUVER

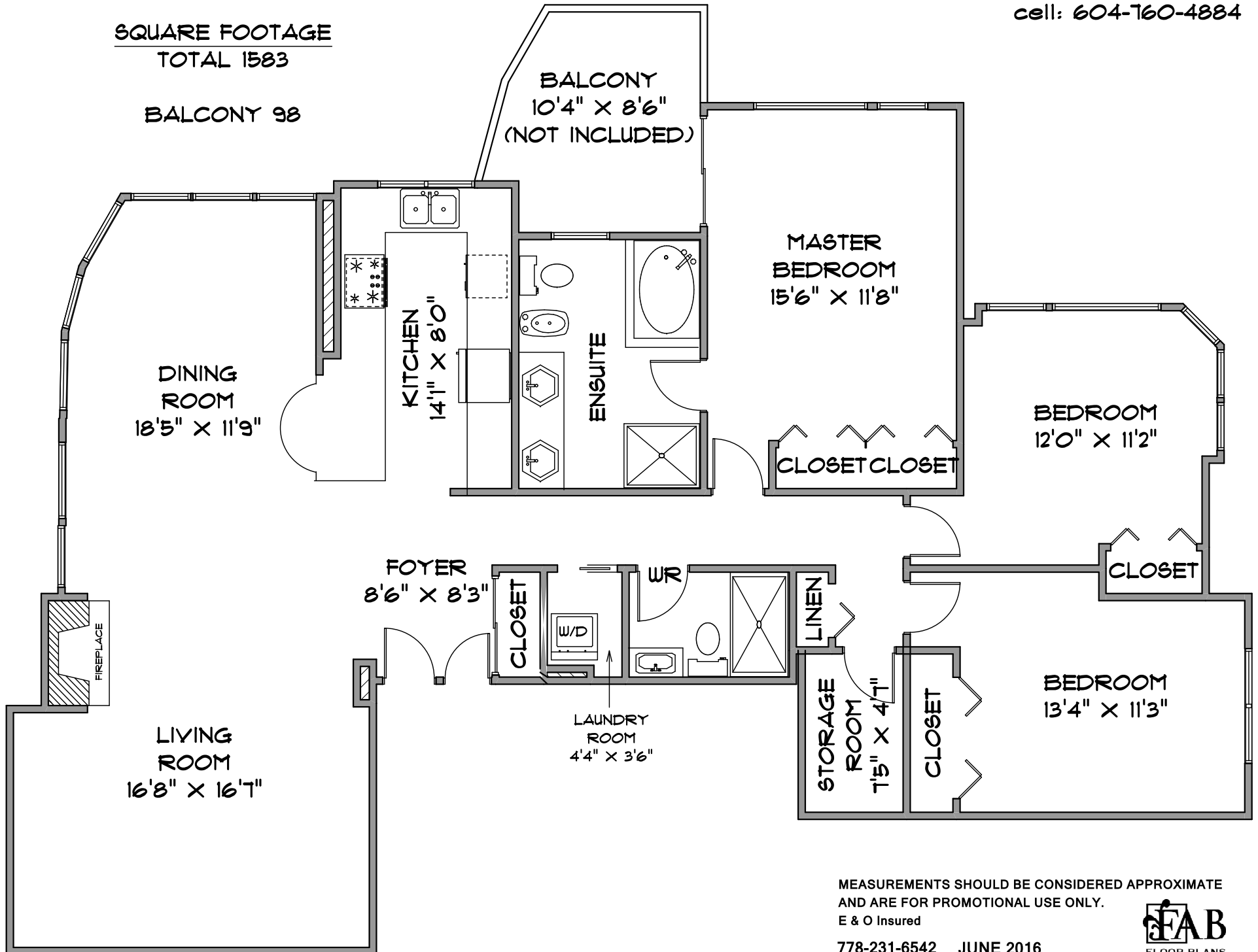
ROYAL LEPAGE | **Sussex**

DIANE BIRK
office: 604-408-9311
cell: 604-760-4884

SQUARE FOOTAGE
TOTAL 1583

BALCONY 98

BALCONY
10'4" X 8'6"
(NOT INCLUDED)



MEASUREMENTS SHOULD BE CONSIDERED APPROXIMATE
AND ARE FOR PROMOTIONAL USE ONLY.
E & O Insured

778-231-6542 JUNE 2016

