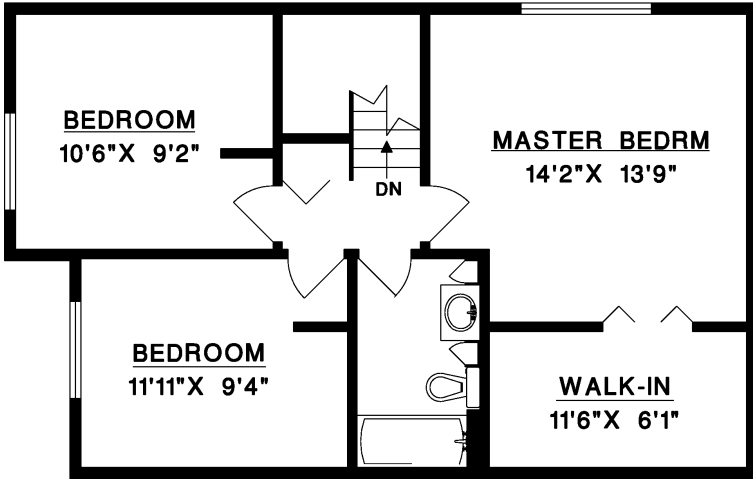


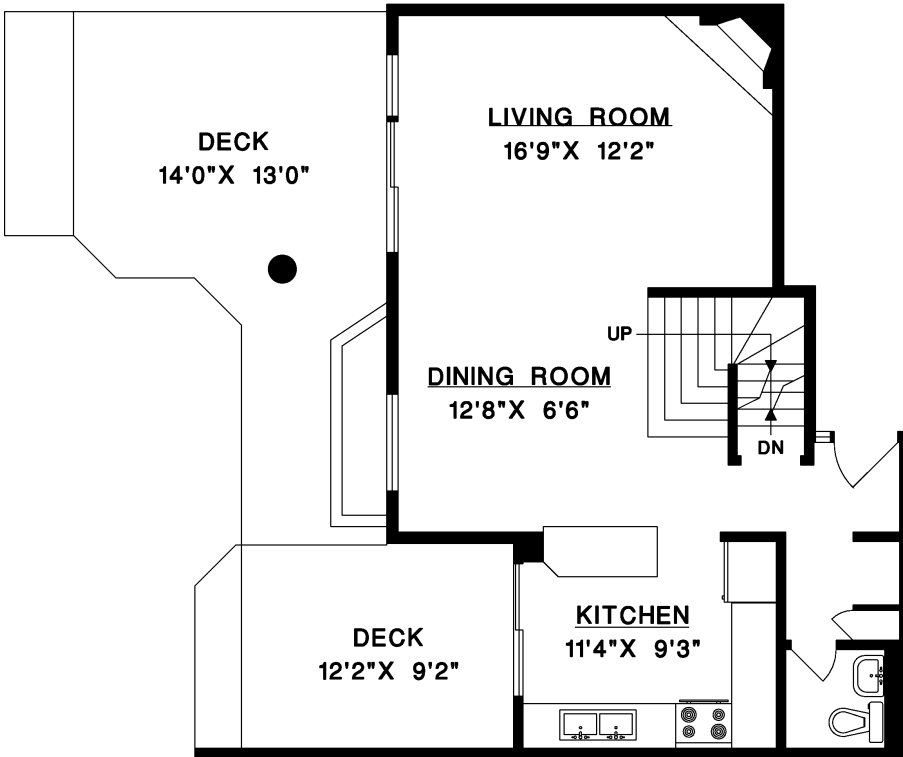


#202-4001 MT. SEYMOUR PARKWAY  
NORTH VANCOUVER

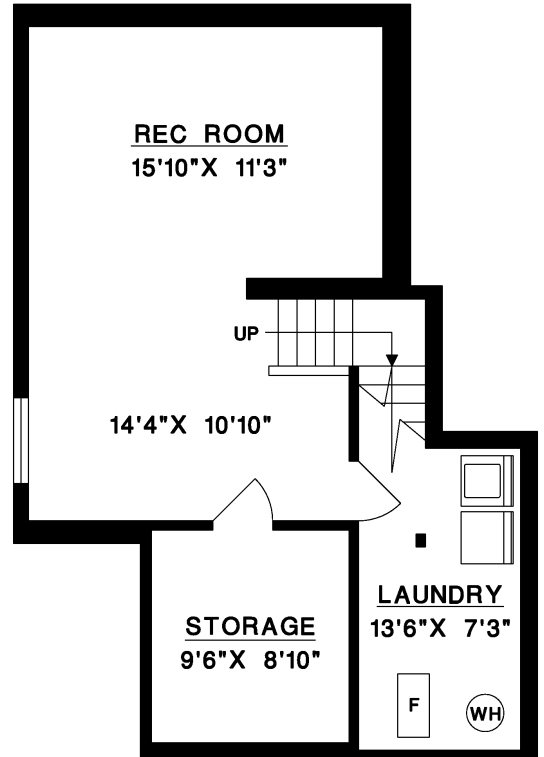
MAIN FLOOR	609 SQ.FT.
UPPER FLOOR	660 SQ.FT.
LOWER FLOOR	594 SQ.FT.
<b>TOTAL</b>	<b>1,863 SQ.FT.</b>
DECK	388 SQ.FT.



**UPPER FLOOR**



**MAIN FLOOR**



**LOWER FLOOR**

