

# A TASTE OF HOME



## A TOAST TO INVITING INTERIORS

- Your Veranda home features famous Kohler quality throughout:
  - Low consumption Sterling toilets and bathroom sinks
  - Hytec bathtubs and shower stalls
  - Kohler Corolais series polished chrome single lever faucets
  - Pull-out spray kitchen sink faucet
- General Electric appliances you can count on:
  - GE 30" self-cleaning electric range
  - GE 18.2 cubic foot frost-free refrigerator
  - GE built-in 4 cycle dishwasher
  - One-third h.p. in-sink disposal
- Shaker-style full wrap PVC laminate kitchen cabinets with decorative weathered iron pulls
- Colour coordinated laminate kitchen and bath countertops
- Ceramic tile kitchen backsplash
- Kindred double bowl stainless steel sink
- Easy care and durable vinyl flooring in the kitchen and bathroom
- Custom designed stained wood mantle with exposed decorative bolts
- Canadian made "Dimplex" Non-polluting 100% efficient Optiflame fireplace on/off control operates for as little as two cents per hour
- One-inch horizontal mini-blinds to easily control the amount of natural light
- Comfortable wall to wall nylon carpet provides long lasting comfort
- Handset porcelain tile with slate insert in the entry foyer
- Quality Weiser door hardware
- Framed mirrors in powder rooms (not all floorplans)
- Wall to wall mirrors and full length counters to enhance bathrooms (most plans)
- Polished chrome bathroom accessories
- Stylish 6" painted wood baseboards throughout
- Distinctive metal and wood stair pickets and stained handrail
- 100% efficient individually zoned electric heating system
- Two colour schemes (Merlot or Chardonnay)



## A SAVOURY BLEND OF EXTERIOR FINISHES

Your home at Veranda is built to last with tough, weather-resistant construction materials:

- Exterior vinyl siding
- Longlife asphalt shingle roof
- Coated aluminum balcony railings and handrails
- Long-lasting double pane vinyl windows for draught-free homes
- Continuous aluminum gutters for effective drainage
- Adera's weatherguard rainscreen construction protocols ensure long lasting durability



## EXPERIENCED AND AWARD-WINNING

Experience the confidence that comes with homes built with Adera know how:

- Smoke alarms built into every home
- Pre-wired for optional alarm system
- Vandal resistant door hardware
- Easy remote control garage door opener provides safe, secure entry to private garage
- Your home is backed by Adera's renowned Service Warranty as well as the government-approved 2/5/10 year warranty coverage provided by St. Paul Warranty
- Gold Georgie winner for Best Builder in BC 2001, 2004
- Gold Georgie winner for Best Customer Service 1996, 1998, 2001, 2003, 2004, 2005



## UNIQUE FLAVOURS... DISTINCTLY YOURS

- Adera and General Electric offer three different upgrade packages for the appliances in your Veranda home. Ask your sales representative for details.
- Check out the many custom upgrades shown in our model homes. Adera offers you the most extensive list of upgrade options of any builder in BC.
  - Optional extra bedroom, optional extra bathroom, optional deluxe kitchen
  - Cabinets and convenience package (wine rack, recycling bin, tip out storage at sink)
  - Stone or tile fireplace surround
  - Granite countertops
  - "Mirage" Hardwood floor (not plastic laminate!)
  - Crown mouldings and window trim
  - Porcelain tile flooring upgrade
  - Sun awnings over balconies
  - Interior lighting upgrade
  - Built-in bookcase, shelf option
  - Glass kitchen cabinet doors
  - Security systems and much more

**mirage**



We bring good things to life.

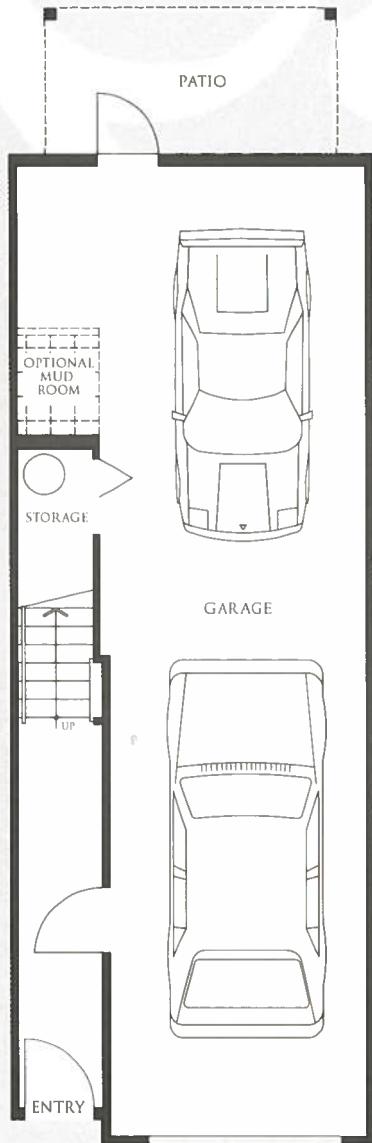
**KOHLER**.Home



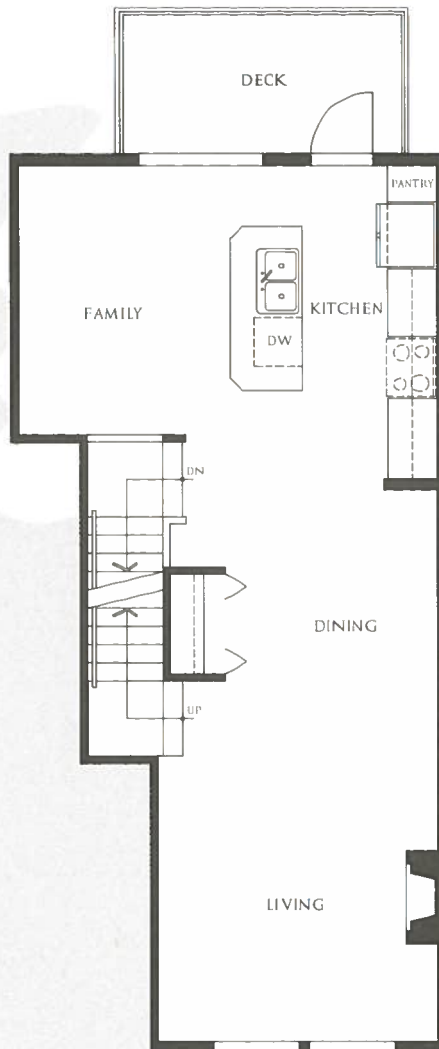
Home Warranty provided by  
**The St Paul**

# CHATEAU

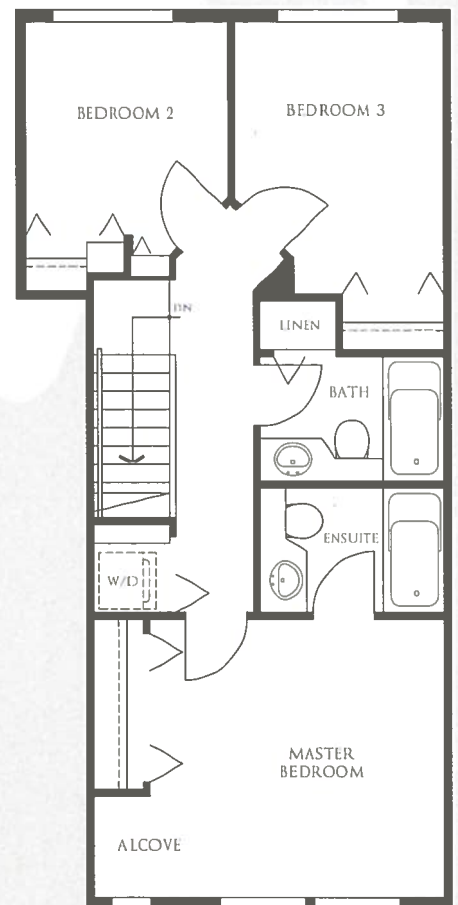
PLAN C - APPROX 1,211 SQUARE FEET  
3 BEDROOM, 2 BATHROOM



LOWER FLOOR



MAIN FLOOR



UPPER FLOOR