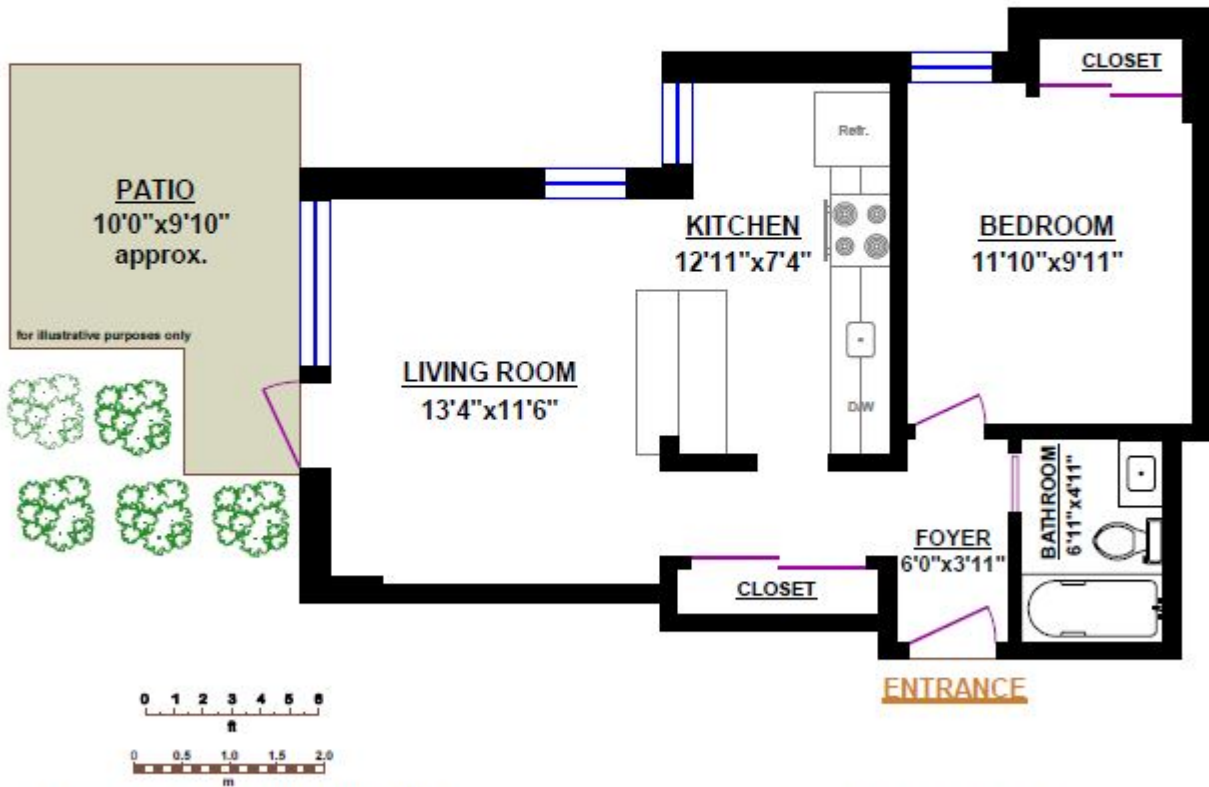


#104 - 2920 ASH STREET, VANCOUVER

TOTALS	
Main Floor*:	568 sq.ft.



© Vancouver Realty Support Group Inc., (604) 761-7919


www.floorplansvancouver.com
 PREMIER PRODUCTS AND SERVICES

* Measured to exterior of walls and to the middle of the common walls
 * These measurements are not taken from the Strata Plan.