

5329 Woodsworth Street, Burnaby, B.C.



PERSONAL REAL ESTATE CORPORATION

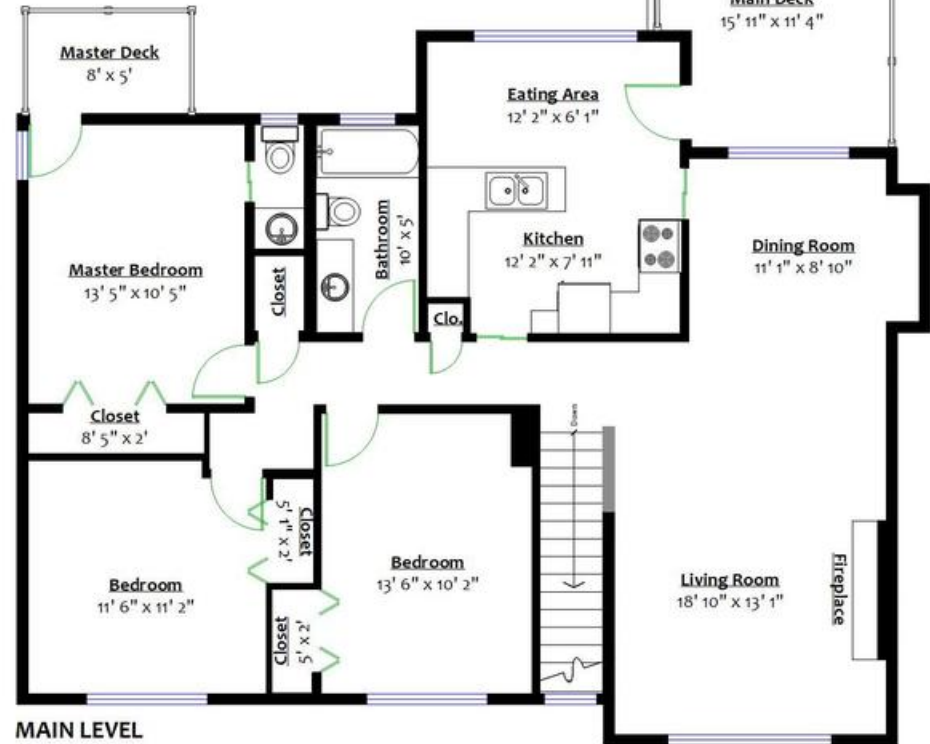
www.keenanhomes.ca
info@keenanhomes.ca
604-649-4548

Totals**

Main Level:	1,270 sq. ft.	Garage:	241 sq. ft.
Lower Level:	1,023 sq. ft.	Main Deck:	160 sq. ft.
Total:	2,293 sq. ft.	Lower Deck:	209 sq. ft.
		Master Deck:	40 sq. ft.
		Total:	650 sq. ft.



LOWER LEVEL
Floor Area: 1,023 Sq. Ft.
Ceiling Height: 7' 10"



MAIN LEVEL
Floor Area: 1,270 Sq. Ft.
Ceiling Height: 9' 3"

