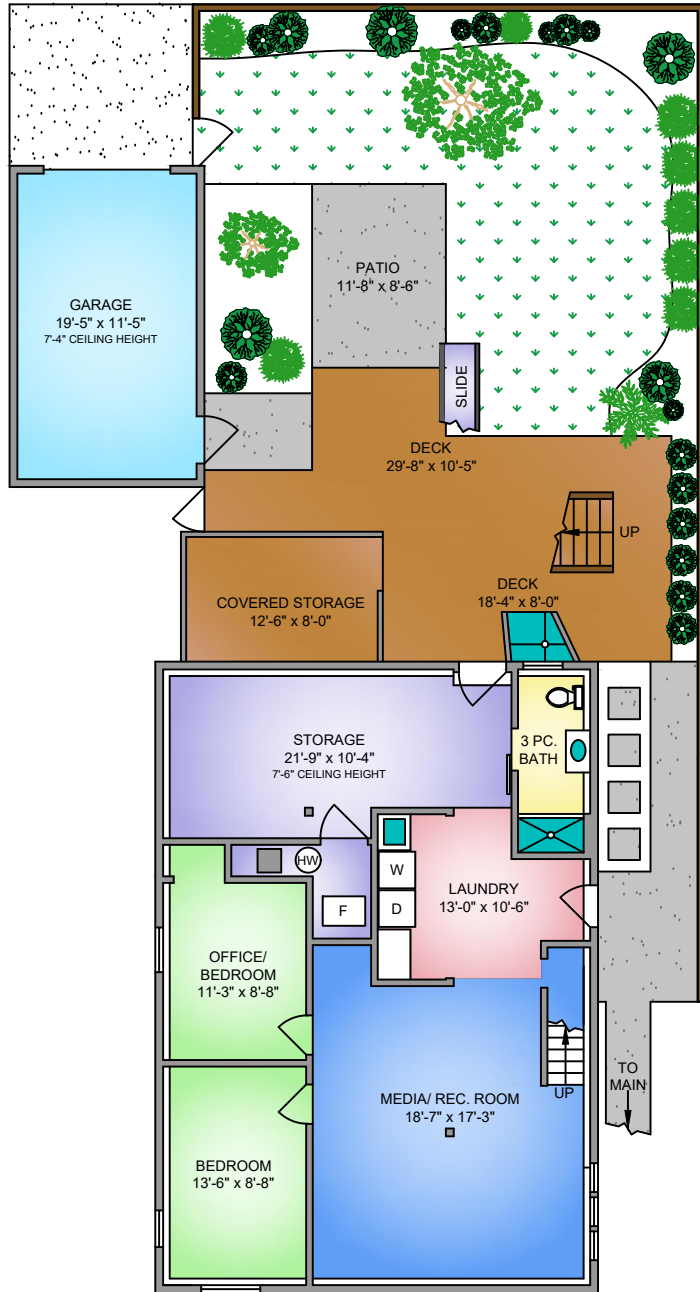


LOWER FLOOR

916 SQ. FT.

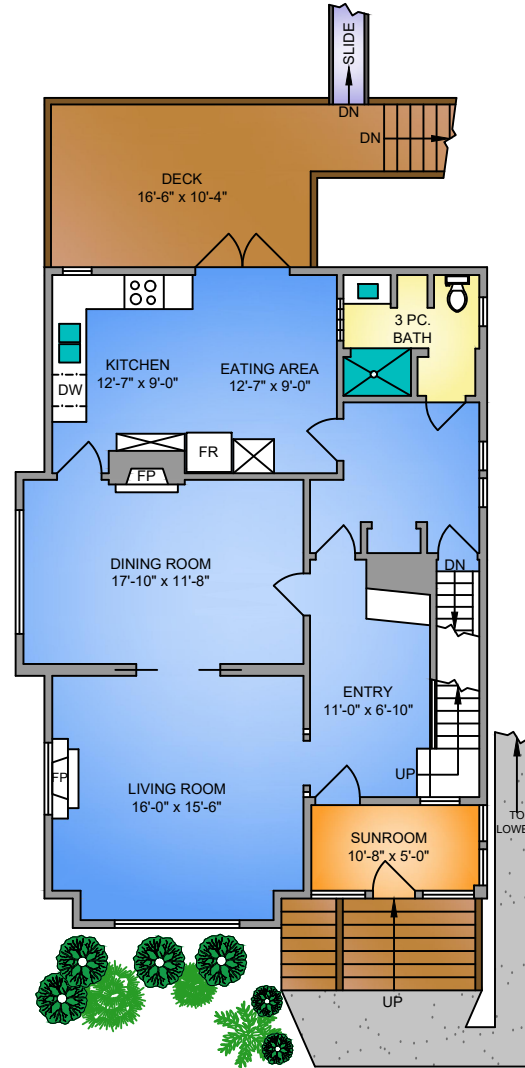
7'-6" to 6'-2" CEILING HEIGHT



MAIN FLOOR

1128 SQ. FT.

9' CEILING HEIGHT

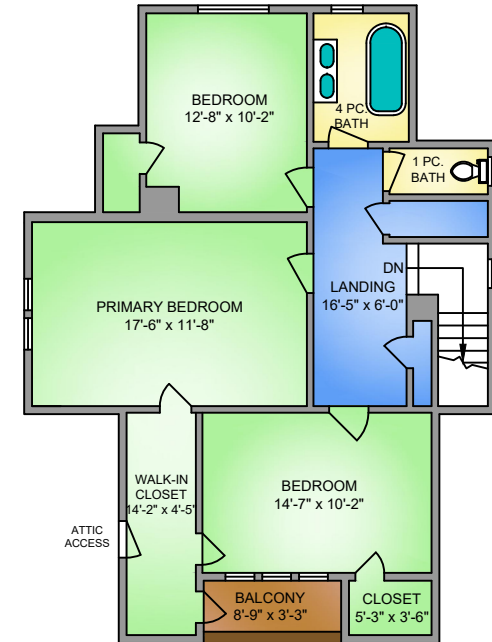


250-884-9753
matt@propermeasure.com
www.propermeasure.com

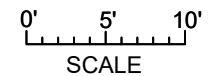
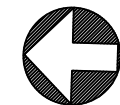
UPPER FLOOR

1110 SQ. FT.

8'-4" CEILING HEIGHT



NORTH



CHRISTIE'S
INTERNATIONAL REAL ESTATE

TOBY TREMBATH - PREC
250-882-8220

319 VANCOUVER STREET SEPTEMBER 15, 2020				
PREPARED FOR THE EXCLUSIVE USE OF TOBY TREMBATH PLANS MAY NOT BE 100% ACCURATE, IF CRITICAL BUYER TO VERIFY.				
FLOOR	AREA (SQ. FT.)			
	FINISHED	SUNROOM	GARAGE	DECK / PATIO
MAIN	1110	66	-	190
UPPER	916	-	-	28
LOWER	1128	-	253	451
TOTAL	3154	66	253	669