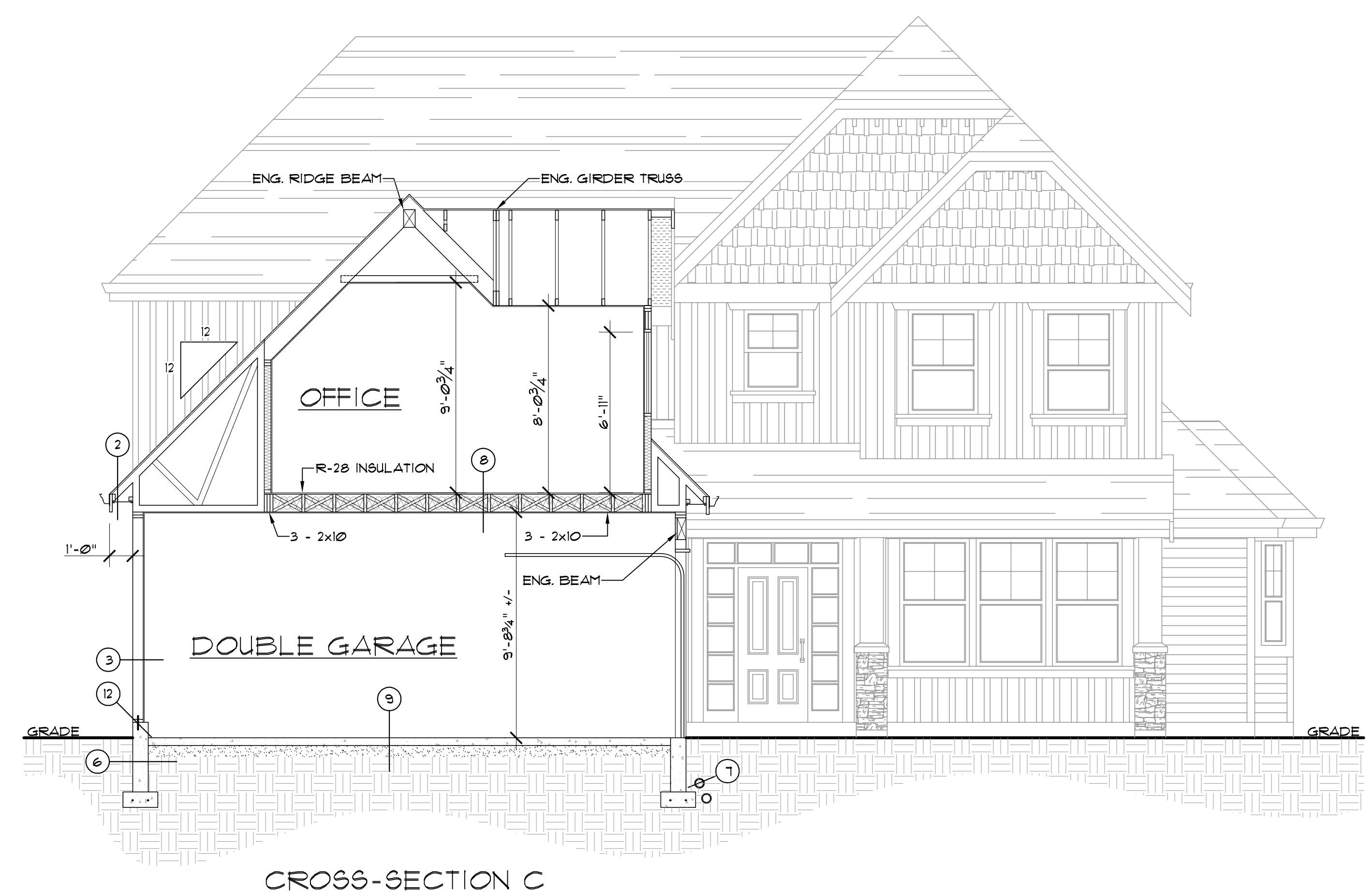
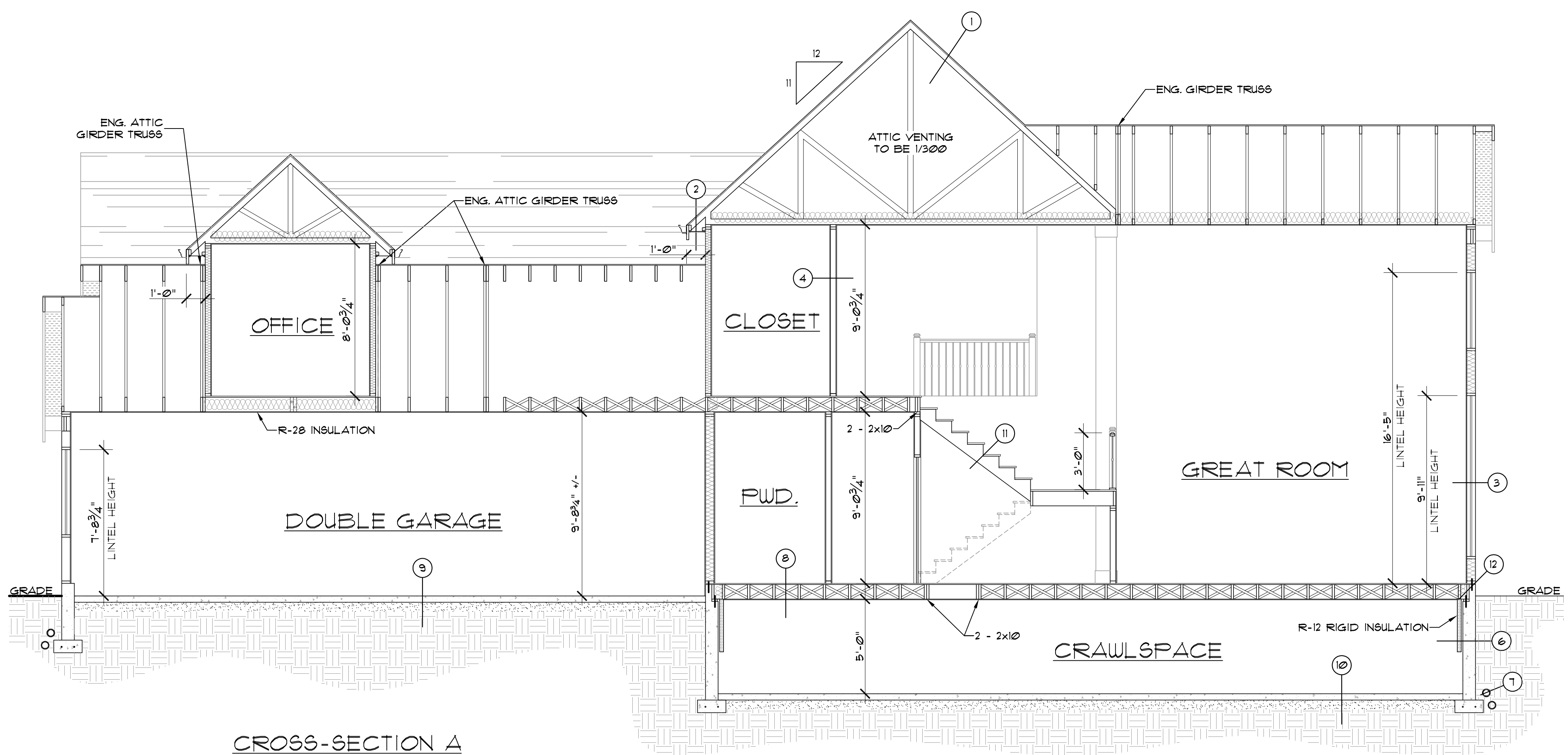


CROSS-SECTION B



CROSS-SECTION C



CROSS-SECTION A

BUILDING SPECS

- TYPICAL ROOF**
 - ASPHALT SHINGLES
 - #5 FELT AT EAVE LINE TO 12" INSIDE
 - 1/2" OSB ROOF SHEATHING
 - C/W H-CLIPS
 - ENG. TRUSSES @ 24" O.C.
 - R-40 BL. INSULATION
 - 6 MIL POLY V.B.
 - 5/8" FIREGUARD G.W.B.
- TYPICAL OVERHANG**
 - 5" CONT. GUTTER
 - 2X10 FINISH FASCIA
 - 2X4 SUBFASCIA
 - VENTED CEDAR SOFFIT
- TYPICAL EXTERIOR WALLS**
 - EXTERIOR CLADDING
 - 3/4"x2" OR 3/2"x2" BORATE TREATED EXTERIOR GRADE PLYWOOD STRAPPING AT 8" OR 16" O.C.
 - 2 LAYERS OF 30 MIN. RATED BUILDING PAPER, OR 1 LAYER OF BUILDING PAPER (TYVEK COMMERCIAL WRAP) OR EQUIVALENT
 - 3/8" OSB WALL SHEATHING
 - R-20 MIN. INSULATION
 - 2X6 STUDS @ 16" O.C.
 - 6 MIL POLY V.B.
 - 1/2" GYPSUM WALL BOARD
- TYPICAL INTERIOR WALL**
 - 1/2" G.W.B.
 - 2X4 STUDS @ 16" O/C
 - 1/2" G.W.B.
- TYPICAL BASEMENT BEARING WALL**
 - 1/2" G.W.B.
 - 2X6 STUDS @ 16" O/C
 - 1/2" G.W.B.
 - 6"x4" CONCRETE CURB
 - 16"x8" CONCRETE STRIP FOOTING
 - C/W 2 ROWS 10M BAR CONT.
- TYPICAL FOUNDATION WALL**
 - 8" CONCRETE FOUNDATION WALL
 - 18"x8" CONCRETE FOOTING
 - C/W 2 ROWS 10M BAR CONT.
 - 2 COATS OF BITUMINOUS MATERIAL BELOW GRADE
- TYPICAL DRAINAGE @ FOUNDATION**
 - 4" SOLID PVC FILTER CLOTH
 - MIN. 6" DRAIN ROCK AROUND
 - 4" PERF. PERM. DRAIN
 - DRAIN TO SOAK PITS
 - ACCORDING TO MUNICIPAL STANDARDS
- TYPICAL FLOOR SYSTEM**
 - FINISHED FLOOR BY CLIENT
 - 5/8" T&G FLYWOOD GLUED & NAILED
 - 2X10 FLOOR JOISTS @ O/C AS SHOWN
 - 2X2 CROSSBRIDGING @ 6'10" O/C (MAX.)
 - 1/2" G.W.B.
- TYPICAL BASEMENT FLOOR**
 - 4" THICK 28MP# CONC. SLAB
 - 6 MIL. U.V. POLY V.B.
 - MIN. 6" COMP. GRANULAR FILL
- GARAGE SLAB**
 - 4" THICK 28MP# CONC. SLAB
 - MIN. 6" COMP. GRANULAR FILL
 - 1% MIN. SLOPE
- TYPICAL CRAWL SPACE FLOOR**
 - 2" CONCRETE SKIM COAT
 - 6 MIL POLY V.B.
 - MIN. 6" COMP. GRANULAR FILL
- TYPICAL SLAB ON GRADE FOUNDATION**
 - FLASHING
 - 1/2" PRESSURE TREATED FLYWOOD
 - R-12 RIGID INSULATION
 - 8" CONCRETE FOUNDATION WALL
 - 18"x6" CONCRETE FOOTING
 - C/W 2 ROWS 10M BAR CONT.
- TYPICAL SUNDECK**
 - 2X6 P.T. DECKING
 - 2X10 P.T. JOISTS @ 16" O/C
 - 42" HIGH RAILING TO CODE
- TYPICAL STAIRS**
 - 10" RUN
 - 16 RISERS @ 1 7/8" MAX.
 - 3 - 2x12 STRINGER
 - 32-36" HANDRAIL TO BE PROVIDED
 - * STAIRS WITH 3 RISERS OR MORE PROVIDE A MIN. OF 6'-6" HEADROOM
- TYPICAL ANCHORAGE**
 - 2X6 P.T. SILL PLATE
 - ANCHOR BOLTS @ 6'-0" O/C
 - ON FOAM SILL GASKET

No.	Revision / Issue	Date
1	issued for permit	14/04/08

Project
23958
36 'a' ave

Client
corey janzen

Drawing
cross-sections

Date	Scale
april 2008	1/4"=1'-0"
Drawn by t.s.	Sheet A-5
Plan # T05203	

These drawings comply with Part 9 of the 2006 BC Building Code