

2249 Willoughby Way, Langley

Totals**

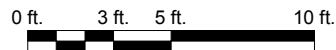
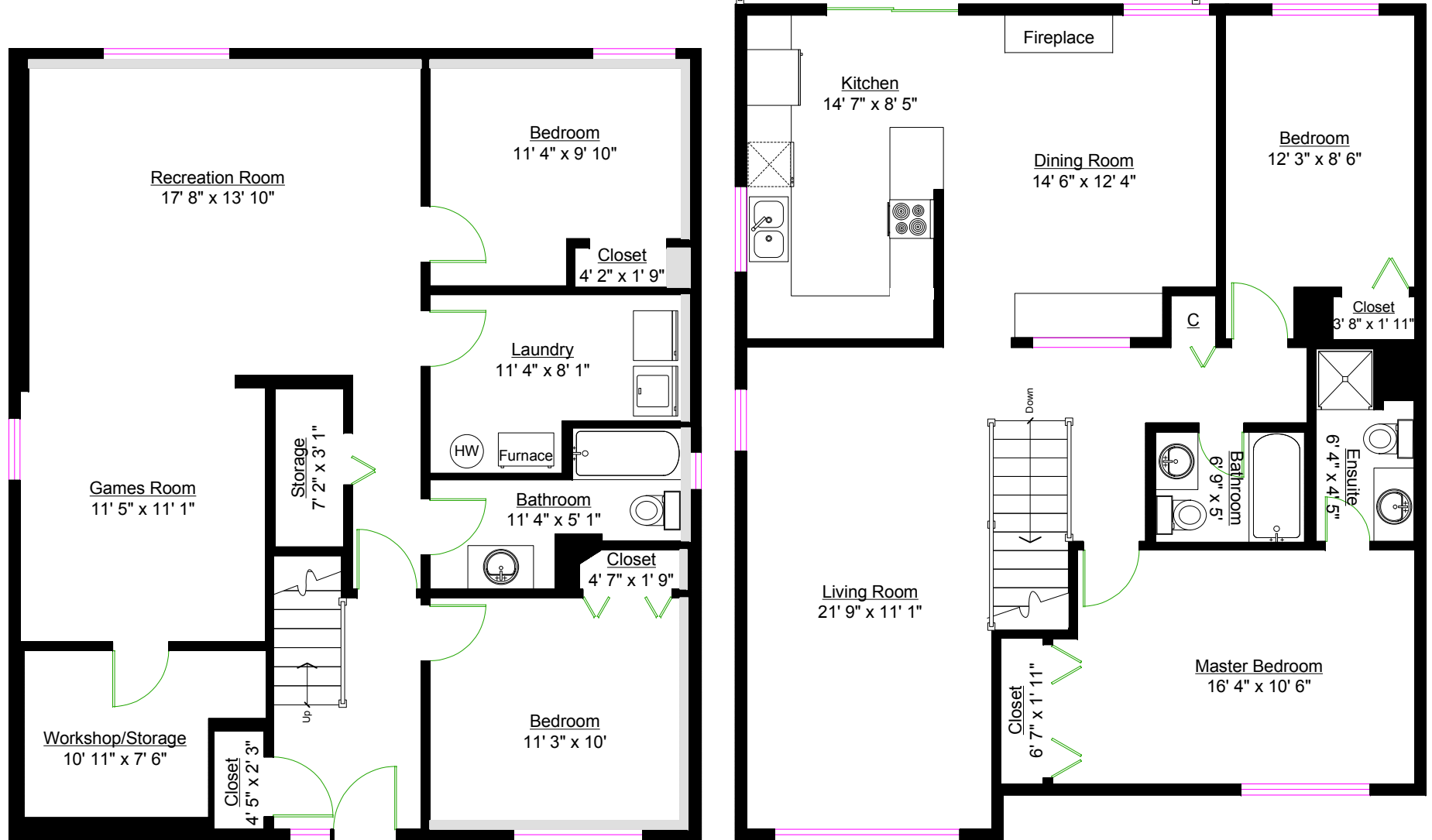
Main Level: 1,131 sq. ft.
 Lower Level: 1,110 sq. ft.
 TOTAL: 2,241 sq. ft.

Other Areas

Deck: 202 sq. ft.



Greg & Liz Holmes
 778-834-9929



** Approx. based on interior measurements to exterior walls
 ** Total square footage not taken from original blueprints