

# The Wood Lily

HE3609C

36' WideLot™ Homes

# 2661

SQ.FT.

Corner

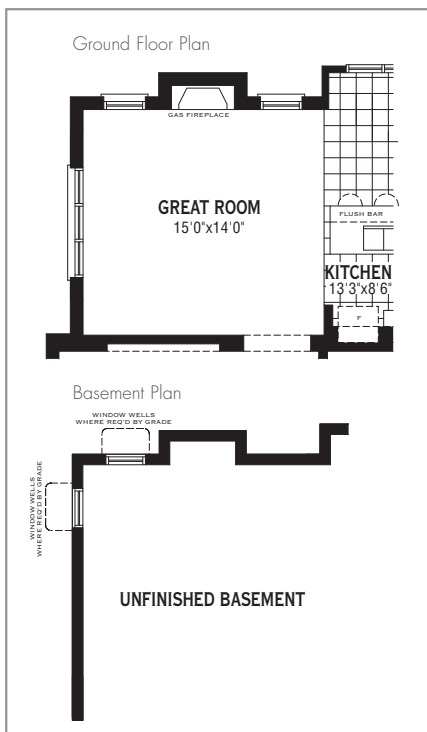
(Incl. 17 Sq.Ft. OTA)



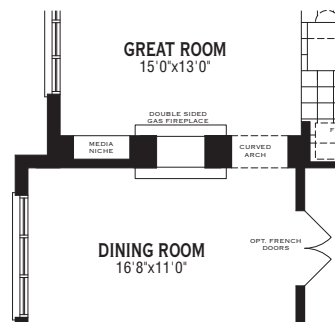
## "Architect's Choice" Options

### Ground Floor Options

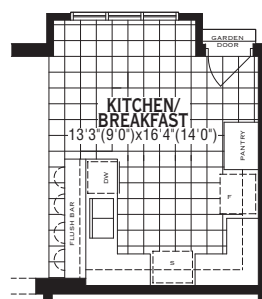
1 Gas Fireplace In Great Room



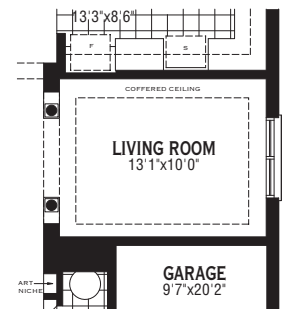
2 Double Sided Gas Fireplace



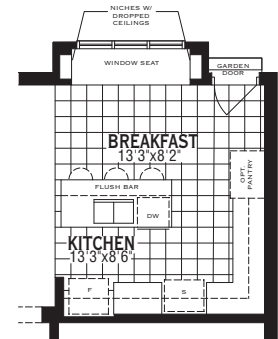
4 Alternate Kitchen Layout

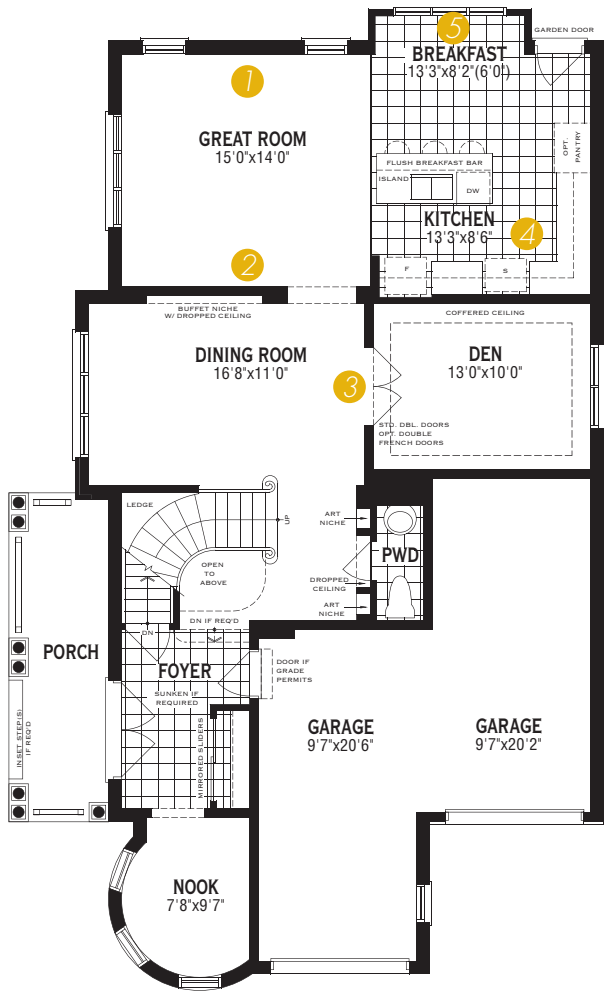


3 Open Living Room w/Decor Columns

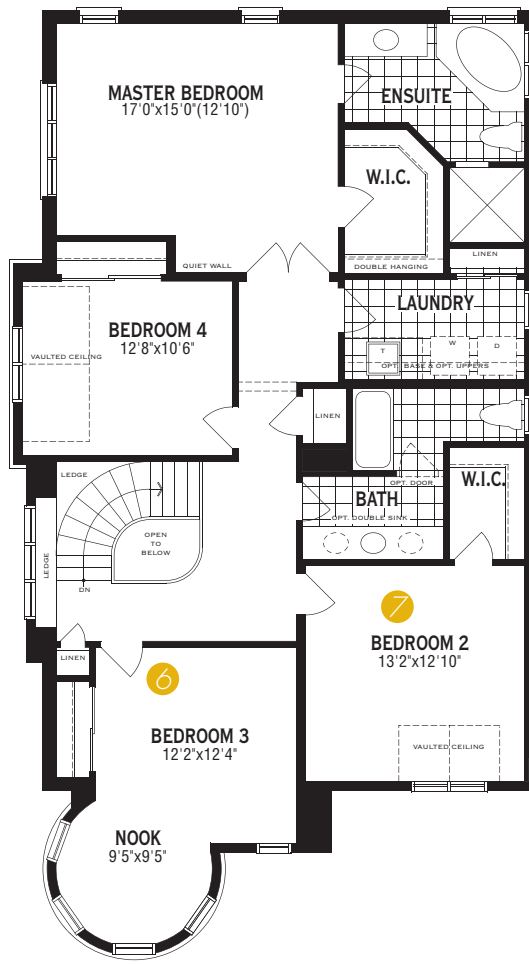


5 Window Seat w/Niches

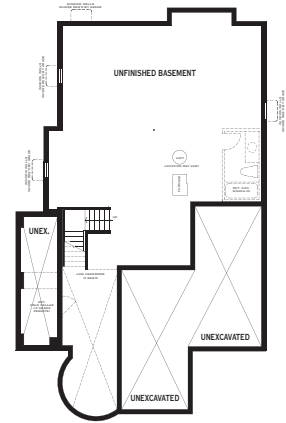




Ground Floor Plan



Second Floor Plan  
4 Bedroom



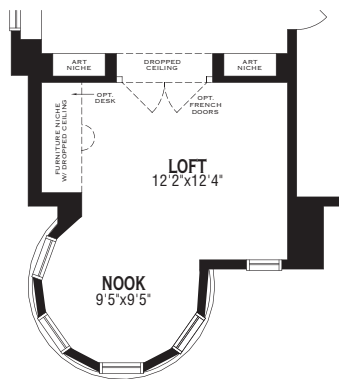
Basement Plan



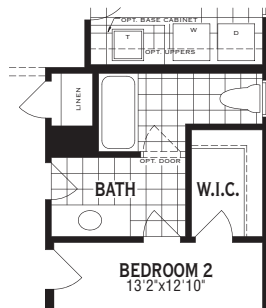
**"Architect's Choice" Options**

*Second Floor Options*

**6** Loft In Lieu Of Bedroom 3



**7** 2nd Door To Bath



**Additional Architect's Choice Options Available for this Home:**

**Ground Floor Choices**

2' Ceiling Package

- Includes:
- Approx. 12" higher ceilings
  - Taller upper kitchen cabinets
  - Taller Ground Floor windows and patio sliding doors (where applicable)
  - Transom over front and Garden Doors (where applicable)
  - Approx. 8'0" high interior arches and doors (where applicable)
  - Stair configuration and/or minor design changes may be required to accommodate

**Basement Choices**

Cold Cellar

- Includes:
- Partial area under the front porch specific to the elevation purchased
  - Insulated door, overhead light, floor drain and vent

Rec. Room Ready Package

- Includes:
- Rough-in drains in predetermined location for future 3-piece bathroom

**HE3609C**

All illustrations are artist's concept. Specifications, terms and conditions are subject to change without notice. These floor plans and room dimensions apply to elevation 'C' of this model type. Note that plans and room dimensions may vary according to elevation. Plan may be built as the mirror image. "Quiet wall" (where shown) means a wall in which additional insulation has been installed. This will assist in reducing, but not eliminating, ambient sound from adjoining rooms and mechanical systems. The extent of the reduction will vary depending upon various factors including, without limitation, the presence and extent of mechanical systems located in the wall. Please consult your sales representative. E.&O.E. August 2010 - Copyright 2010 - Mattamy Homes Limited. Reprint August 2011.