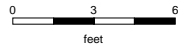


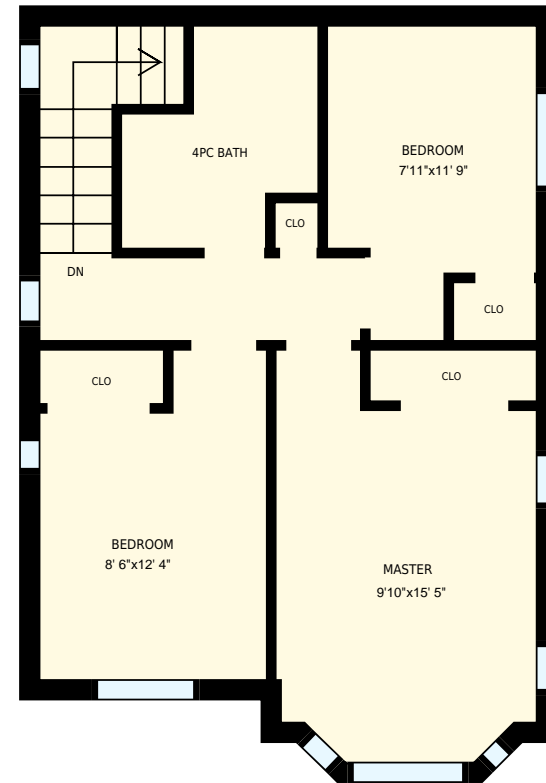


Unit 102 448 Young St, Penticton, BC

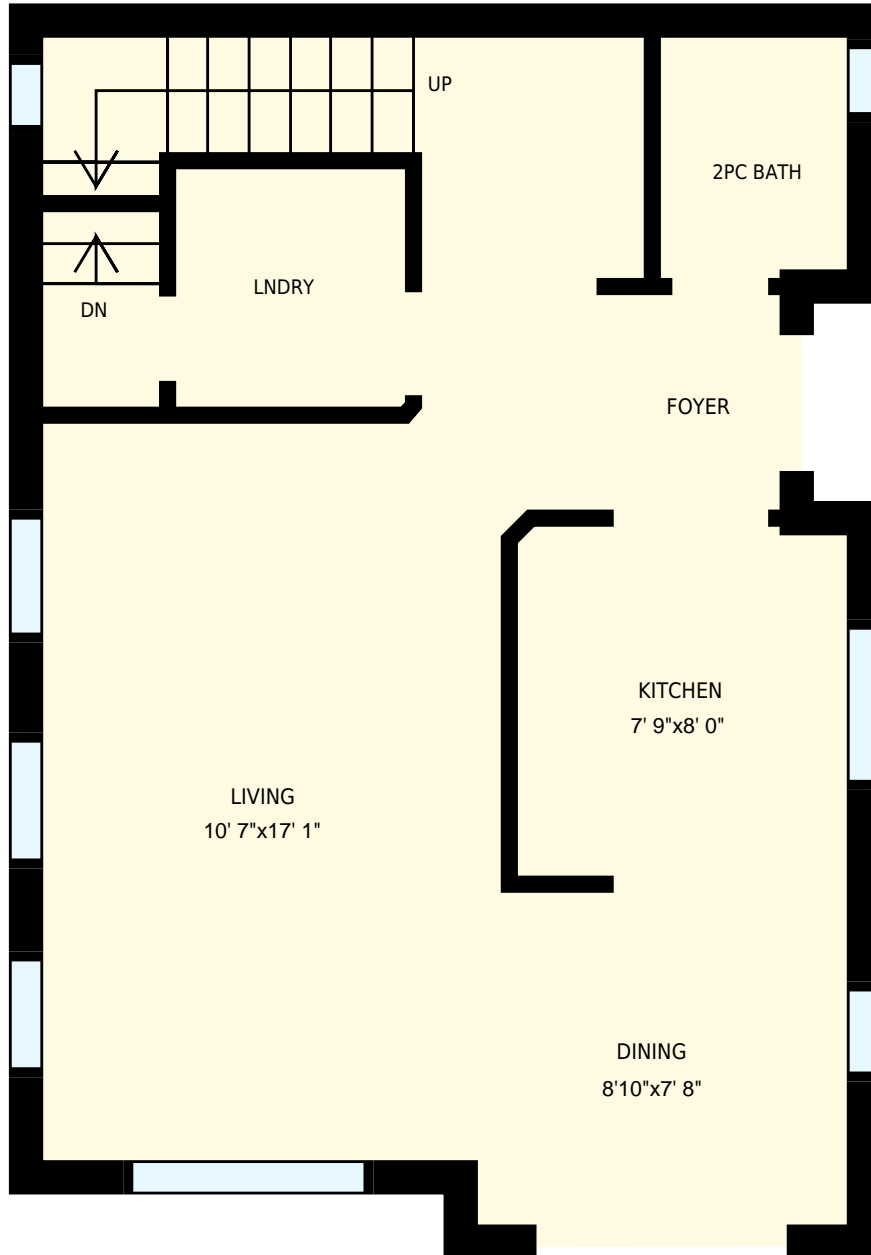
Total Exterior Area Above Grade 1123 sq. ft



Main Floor
Exterior Area 570 sq. ft



2nd Floor
Exterior Area 554 sq. ft



Unit 102 448 Young St, Penticton, BC

Main Floor

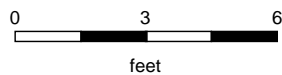
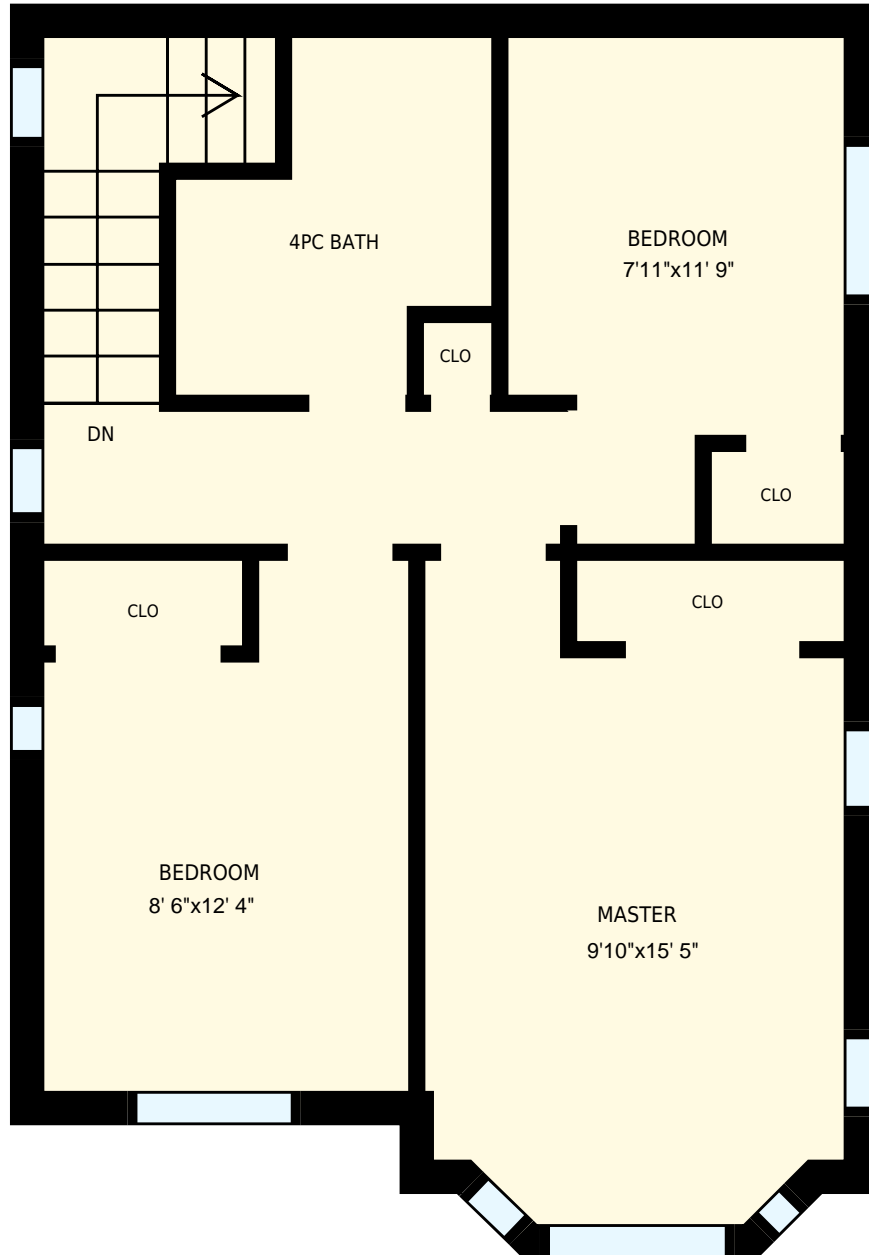
Interior Area 506 sq. ft
 Exterior Area 570 sq. ft

 Included Area

PREPARED FOR:
 Team Bloomfield
 Julius Bloomfield (Personal Real Estate Corporation), Alex Bloomfield, & Craig Henderson (Personal Real Estate Corporation)
 Royal LePage Locations West Realty

PREPARED ON:
 Jan, 2017

All room dimensions and floor areas must be considered approximate and are subject to independent verification.
 For method of measurement please see <https://youriguide.com/measure/>.




Unit 102 448 Young St, Penticton, BC

PREPARED FOR:
Team Bloomfield
Julius Bloomfield (Personal Real Estate Corporation), Alex Bloomfield, & Craig Henderson (Personal Real Estate Corporation)
Royal LePage Locations West Realty

2nd Floor

Interior Area 493 sq. ft
Exterior Area 554 sq. ft

 Included Area

PREPARED ON:
Jan, 2017

All room dimensions and floor areas must be considered approximate and are subject to independent verification.
For method of measurement please see <https://youriguide.com/measure/>.