

Mortgage Information

Price: \$598,800	5%	10%	20%
Min. Down Payment Required	\$29,940.00	\$59,880.00	\$119,760.00
First Mortgage	\$568,860.00	\$538,920.00	\$479,040.00
Insurance Premium	\$16,781.37	\$11,856.24	n/a
Total Mortgage	\$585,641.37	\$550,776.24	\$479,040.00
Monthly Mortgage Payment	\$2,621.54	\$2,465.47	\$2,144.36
Total Monthly Payments**	\$2,835.88	\$2,679.81	\$2,358.69
Combined Income Required***	\$109,157.88	\$103,305.29	\$91,263.39

Home Stats

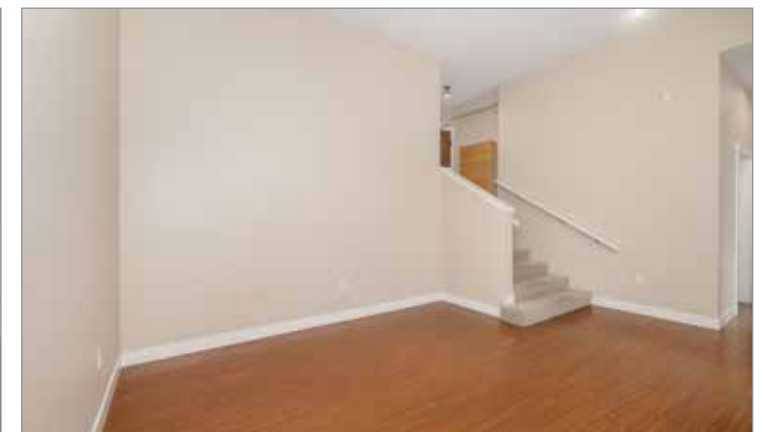
Price:	\$598,800
Bedrooms:	2
Bathrooms:	2
Square Ft.:	1071
Age:	13
Gross Tax:	\$1,699.40
Strata Fee:	\$384.93

Based on a Conventional Rate of 3.0 & 30 Year Amortization / * Rates subject to change without notice
 ** Includes: estimated yearly property taxes, Principle & Interest / *** Subject to approval

All Your Mortgage Needs Contact:

MICHAEL HALLET
 Dominion Lending
 T (604) 616-2266

michael@hallettmortgage.com
www.hallettmortgage.ca



Royal LePage West Real Estate Services
 2185 Austin Ave, Coquitlam, BC V3K 2Y5
 T 604 939 6666 F 604 909 2666

WWW.HAFEZREALTY.COM
WWW.LIVEATSIMONFRASER.COM
WWW.LIVINGCOQUITLAM.COM

1% of Net Real Estate Proceeds Donated to *The Kidney Foundation*



604 377 3689
hafez@hafezrealty.com



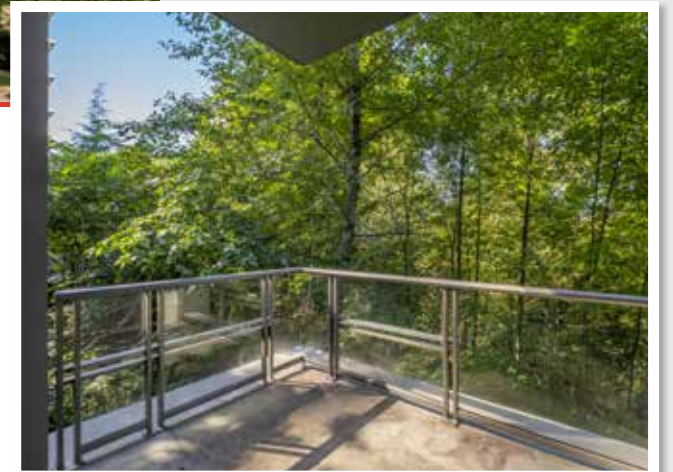
HAFEZ PANJU
PERSONAL REAL ESTATE CORPORATION
LIVEATSIMONFRASER.COM

Gorgeous Forest Outlook
101 9222 University Cr.
Burnaby, Simon Fraser University

\$598,800

Property Highlights

Bright Corner Unit
Open Layout With 12' Ceilings
Partially Covered Balcony
2 Bed , 2 Bath, 1071sqft
Bonus: 1 Parking & Locker



Stunning & bright corner home that will exceed your expectations. This 2bed/2bath/1071sqft home offers West exposure, green space & mountain top views, 12' ceilings, expansive windows, a spacious open plan, a covered balcony & unique foyer. Altaire is a concrete hi-rise with high-end finishing, excellent amenities & is rental & pet friendly. Features: granite counters, stainless appliances, large great room style layout, breakfast bar & excellent in-suite storage. The spacious master has walk-in closet & ensuite w/2 sinks, soaker & shower. Bonus: 1 parking & locker. Close to: transit, shopping, indoor/outdoor rec & a host of perks available only to UniverCity residents. Do not miss your chance to enjoy living in this great lifestyle neighborhood! Act Now. Call for showing details.



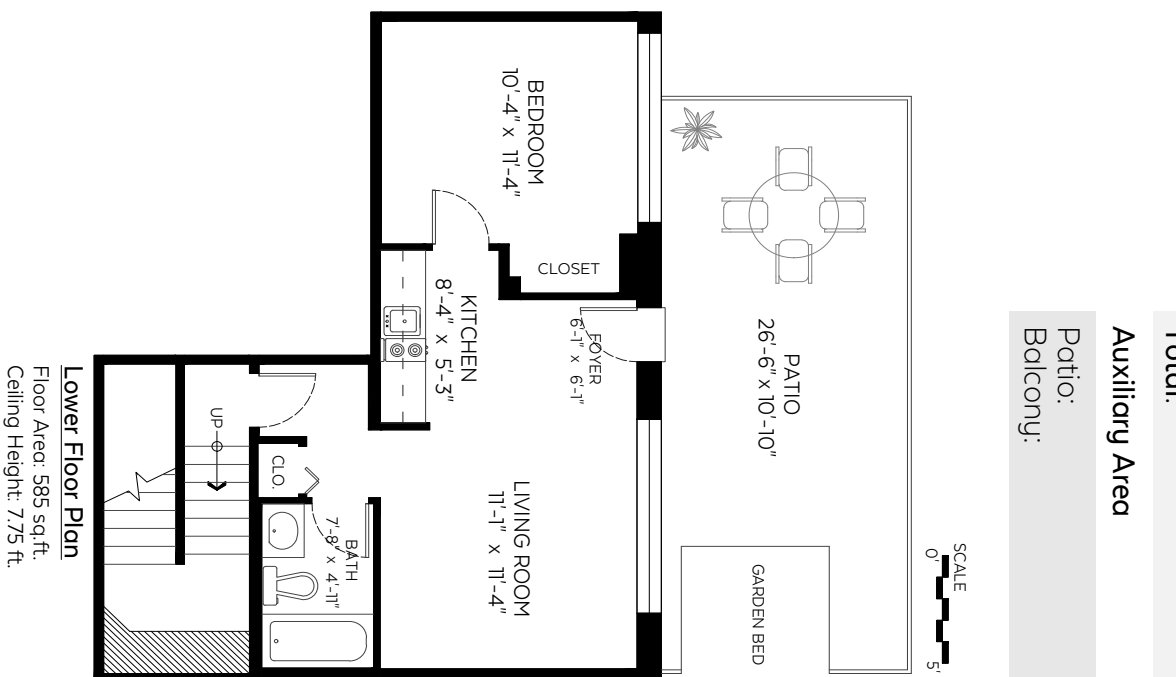
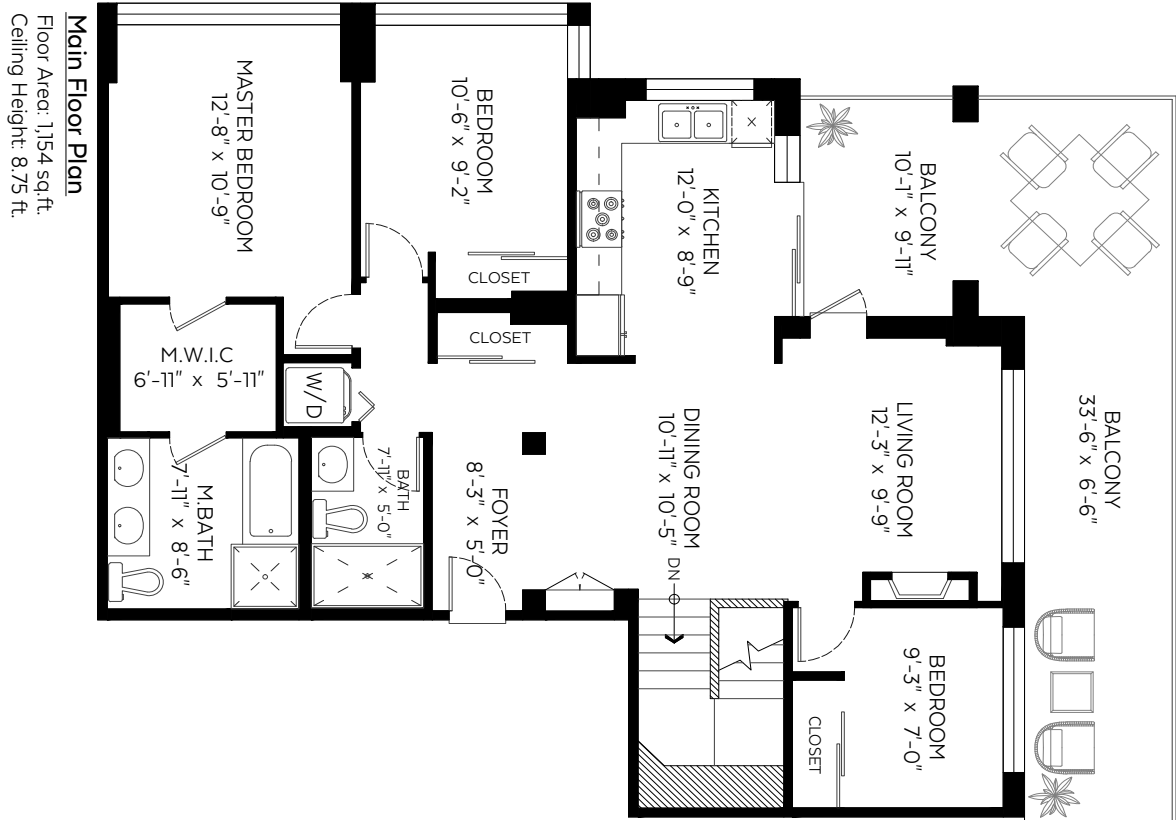
Royal LePage West Real Estate Services
2185 Austin Ave, Coquitlam, BC V3K3R9
T 604 939 6666 F 604 909 2666

WWW.HAFEZREALTY.COM
WWW.LIVEATSIMONFRASER.COM
WWW.LIVINGCOQUITLAM.COM



HAFEZ PANJU
PERSONAL REAL ESTATE CORPORATION
TRUST THE VALUE

604.377.3689 | hafez@hafezrealty.com | www.hafezrealty.com



Main Floor:	1,154 sq.ft.
Lower Floor:	585 sq.ft.
Total:	1,739 sq.ft.
Auxiliary Area	
Patio:	250 sq.ft.
Balcony:	315 sq.ft.

#102-9300 University Crescent,
Burnaby, B.C.



The floor plan is not suitable for architectural/construction and is covered under EAO. © Excelsior Measuring Inc. 2019. All rights reserved for Excelsior Measuring Inc. Users shall not publish and distribute such material (in whole or in part) and/or incorporate it in other works in any form.

Valid Until: April 20, 2022

