



HAFEZ PANJU
PERSONAL REAL ESTATE CORPORATION
TRUST THE VALUE

604.377.3689 | hafez@hafezrealty.com | www.hafezrealty.com

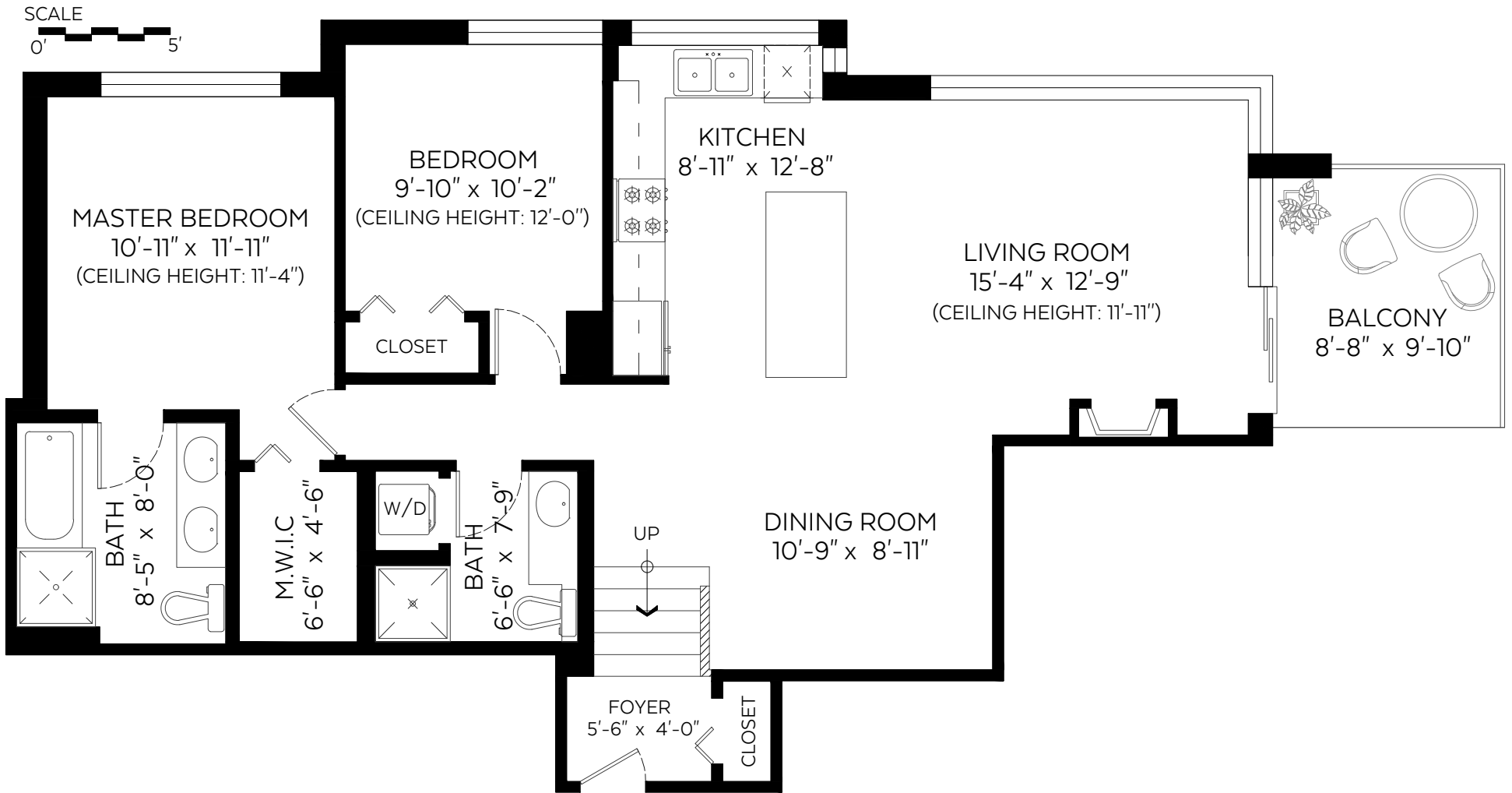
#101-9222 University Crescent,
Burnaby, B.C.

Main Floor: 1,071 sq.ft.

Ceiling Height: 10'-0"

Auxiliary Area

Balcony: 85 sq.ft.



Valid Until: May 02, 2022

The floor plan is not suitable for architectural/construction and is covered under E&O. © Excelsior Measuring Inc. 2019. All rights reserved for Excelsior Measuring Inc. Users shall not publish and distribute such material (in whole or in part) and/or incorporate it in other works in any form.

