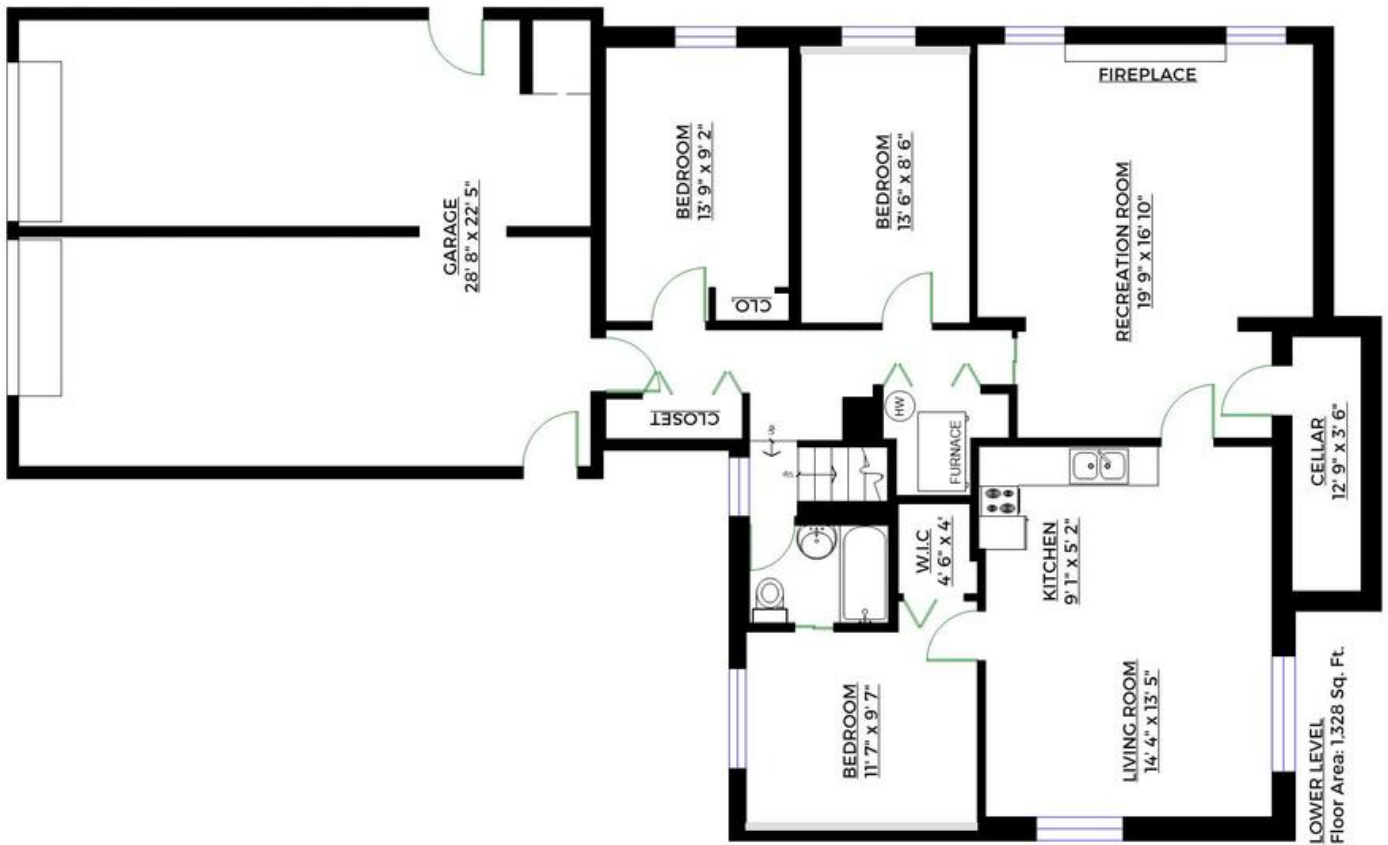


**5246 Spruce Street,
 Burnaby, B.C.**

Totals**	
Main Level:	1,316 sq. ft.
Lower Level:	1,328 sq. ft.
Total:	2,644 sq. ft.
Cellar:	64 sq. ft.
Grand Total:	2,708 sq. ft.
Garage:	690 sq. ft.
Deck:	707 sq. ft.
Porch:	79 sq. ft.
Total:	1,476 sq. ft.



** Approx. based on in-structure measurements to exterior walls.
 ** Total square footage not taken from original blueprints.